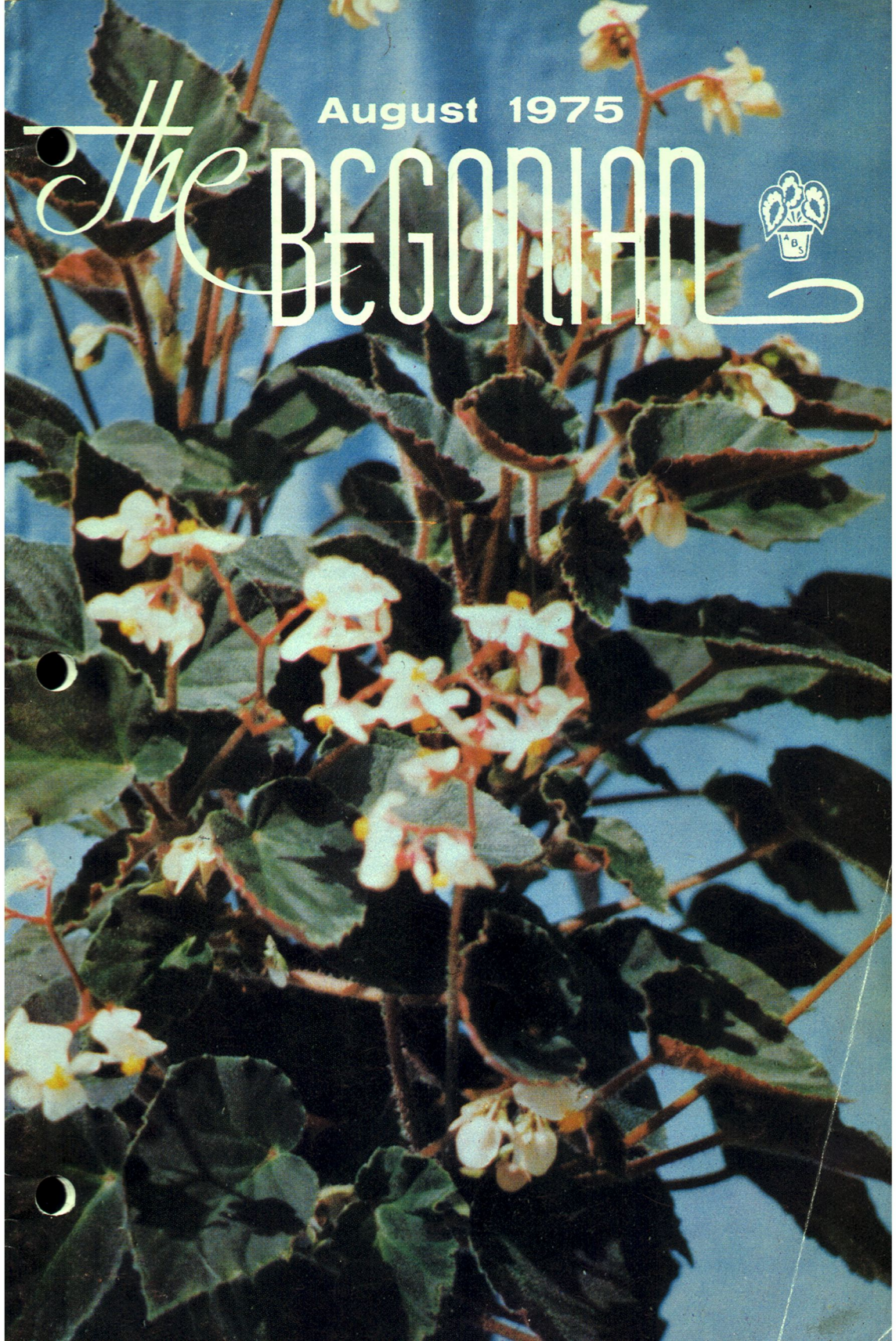


August 1975

# *The* BEGONIAN



## GENERAL OFFICES:

Dues, address changes, or magazines:

5950 Canterbury Dr., Apt. C-201, Culver City, Ca. 90230

Subscription: \$4.00 per year. Foreign (Mexico and Canada) \$4.50. U.S. (Mexico and Canada) 1st Class \$7.00. Overseas Air Mail \$17.00 U.S. (Mexico and Canada) Air Mail \$8.00 Pay in U.S. currency only.

Second Class Postage Paid at Culver City, California

## ELECTED OFFICERS

President .....Margaret Ziesenhenn  
1130 N. Milpas St., Santa Barbara, Ca. 93103  
First Vice President .....Charles A. Richardson  
5444 Hartwick St., Los Angeles, Ca. 90041  
Second Vice President .....Walter Hansen  
344 Plumas Ave., Ventura, Ca. 93003  
Third Vice President .....Peggy McGrath  
1724 Solejar Dr., Whittier, Ca. 90603  
Secretary .....Margaret Ireton  
1702 Camino Primavera, Bakersfield, Ca. 93306  
Treasurer .....Walter J. Barnett  
1213 S. Mullender Ave., West Covina, Ca. 91790

## THE BEGONIAN STAFF

Co-Editors .....Edgar and Phyllis Bates  
P. O. Box 82109, San Diego, Ca. 92138  
Advertising Manager .....Mabel Corwin  
1119 Loma Vista Way, Vista, Ca. 92083  
Eastern Advertising Manager .....Edward Thompson  
310 Hill St., Southampton, L.I., N.Y. 11968  
Advertising Accounts Manager .....Esther Passet  
2133 Dracena St., Bakersfield, Ca. 93304  
Circulation Managers .....Arnie and Edie Krupnick  
11506 McDonald, Culver City, Ca. 90230  
Contributing Editors  
Elda Haring.....Box 236 Ravenswood Loop Rd.  
Flat Rock, N.C. 28731  
Phyllis Wright.....536 N.E. 98th St.  
Seattle, Wash. 98115

## APPOINTED OFFICERS

Awards Chairman .....Walter Pease  
8101 Vicksburg Ave., L.A., Ca. 90045  
Branch Relations Director .....Evelyn Cronin  
88 Ledgeways, Wellesley Hills, Mass. 02181  
Business Manager .....Gilbert A. Estrada  
7914 Springer St., Downey, Ca. 90242  
Historian .....Betty J. Tillotson  
3912 Wildrose Way, Sacramento, Ca. 95826  
Judging Course Director .....Margaret Lee  
1852 31st St., San Diego, Ca. 92102  
Librarian .....Lydia Austin  
15329 Eastwood Ave., Lawndale, Ca. 90260

Members-at-Large Director ....Charles A. Richardson  
5444 Hartwick St., Los Angeles, Ca. 90041

Membership Secretary .....Jacqueline Garinger  
5950 Canterbury Dr., Apt. C-201,  
Culver City, Ca. 90230

Nomenclature Director .....Rudolf Ziesenhenn  
1130 N. Milpas, Santa Barbara, Ca. 93103

Parliamentarian .....Peggy McGrath  
1724 Solejar Dr., Whittier Ca., 90603

Past Presidents Group .....Margaret B. Taylor  
111 Evelyn Drive, Anaheim, Ca. 92805

Research Director .....M. Carleton L'Hommedieu  
370 Locust Ave., Oakdale, L.I., N.Y. 11769

Round Robin Director .....Mae Blanton  
118 Wildoak Drive, Lake Dallas, Texas 75065

Seed Fund Director .....Pearl Benell  
10331 S. Colima Road, Whittier, Ca. 90604

Show Chairman .....Frederick Burgess  
451 Whitman, Goleta, Ca. 93017

Slide Librarian .....Katharine Alberti  
3322 Troy Dr., Hollywood, Ca. 90068

Speakers Bureau .....Debi Miller  
919 Hickory View Circle, Camarillo, Ca. 93010

Public Relations Department  
.....Director

Mabel Corwin, Southern California Asst.  
1119 Loma Vista Way, Vista, Ca. 92083

Corliss E. Engle, New England Asst.  
26 Edgehill Rd., Brookline, Ma. 02146

Philip G. Seitner, North Central Asst.  
736 W. Waveland Ave., Chicago, Ill. 60613

Hyacinth Smith, Northern California Asst.  
2479 29th Ave., San Francisco, Ca. 94116

Mildred Thompson, Central Atlantic Asst.  
310 Hill St., Southampton, L.I., N.Y. 11968

Herbert H. Warrick, Northwestern Asst.  
6543 26th Ave., NE, Seattle, Wa. 98115

Views expressed in this magazine are not necessarily those of the Editors, the Society or its officers.



## COVER PICTURE

B. 'Mabel Corwin' was named for and grown by Mabel Corwin of Vista, California. This plant is shrub-like, grows to about 2 feet in height and shows blooms most of the time. The leaves are deep green, stiff and thick. Mrs. Corwin does not find it necessary to stake the stems.

Belva Kusler, hybridizer of this cultivar, also reports that it is easy to grow and hardy. She, too, has grown it indoors and out in Wisconsin where it has withstood the wind and weather.

The reader may find it interesting to trace the parentage of this hybrid on the family tree in the center pages of this issue. Karen Bartholomew of the Santa Clara Branch supplied the drawing.

## MEMORIAL GIFT

By Lydia Austin, *ABS Librarian*

A set of the *Thompson Begonia Guide* has been donated to the ABS Library in memory of Mrs. Rose Lewis, by Mr. and Mrs. Edward Thompson. Mrs. Lewis was the mother of Mrs. Thompson. This generous gift makes it possible for members to borrow the copy or to request information from the "Guide". The ABS is most grateful for this generous gift. Contributions such as this one can aid many members, and help our library grow.

## FROM THE EDITORS:

In the last issue we printed the Index to the 1974 issues. The time-consuming task of preparing the Index was carried out by Corliss Engle with the aid of some members of the Buxton Branch, Alva Graham of Pasadena and Margaret Huger of the Knickerbocker Branch. Margaret Ziesenhenné both indexed a portion and integrated the efforts of the others. We thank them all.

There will be a second edition of the *Thompson Begonia Guide*. If you were too late or delayed ordering, the first time, reserve your copy now by contacting Mrs. Mildred Thompson, 310 Hill Street, Southampton, N.Y. 11968.

Rhizomatous begonias are often grown for interesting leaves. They usually bloom in winter, so the reader may wonder why the feature article concerns this group of begonias. Read it now and prepare for good plants and good blooms next season. The May cover illustrates the potential heavy bloom of some varieties.

Sharing of plants and ideas is the purpose of ABS and plant shows.

## IN MEMORIAM

Gertrude Windsor-Whittier Branch.

Former ABS Board member.

Cleo Hopkins (Mrs. George)-Texstar Branch, Houston, Texas, Accredited flower show judge.

---

### AIMS AND PURPOSES OF THE AMERICAN BEGONIA SOCIETY

The purpose of this Society shall be:

TO stimulate and promote interest in *Begonias* and other shade-loving plants;

TO encourage the introduction and development of new types of these plants;

TO standardize the nomenclature of *Begonias*;

TO gather and publish information in regard to kinds, propagation and culture of *Begonias* and companion plants;

TO issue a bulletin which will be mailed to all members of the Society; and

TO bring into friendly contact all who love and grow *Begonias*.

## ¡SALUD, BEGONIA & BEGONIAC!

By Frederick Burgess, *ABS Show Chairman*

Welcome to Goleta and Santa Barbara County, California's garden spot!

First I want to thank all who felt that I could suitably fill the position of American Begonia Society's Show Chairman this year. I hope I will not let you down!

Our Show Committees (plant sale, show design, judging, etc.) are doing very well but there seems to be something lacking: MEANINGFUL NATIONAL PARTICIPATION!

The 1975 ABS Show is not alone Santa Barbara Branch's responsibility; mostly local perhaps with helpful participation from California members, but it is a national event.

I emphasize this because I would like to see more interest shown nationwide. Your cooperation is definitely needed! This does not mean that you have to come to the show and move plants and tables around (although we could use help there.) What we need more importantly right now is ideas. This might be in the form of criticism of last year's show, or suggestions for making this year's show the best one yet. *You* are the one who will make this show a success. Please, please do your part.

I would like to suggest that each branch throughout the country appoint a Show Liaison Officer. This person's job would be to insure that each branch is encouraged to exhibit plants and is kept up to date on when and where the Show Committee meetings will be held; to report the show's progress; and to encourage general discussion for improving the Show. The Liaison Officers could have members send any suggestions to me if they cannot appear in person at the meetings. Selection of this Liaison Officer could be done by the branch president or by the whole branch, but it needs to be done NOW!

To all branch Liaison Officers: Please send me your name, address, and phone number so that I may keep in contact; (this does not exclude anyone else who has ideas.) You may contact me by mail or by phone at 451 Whitman, Goleta, CA 93017; phone (805) 968-7069.

I wish to thank all branches and members in advance for their interest and participation in the ABS National Show and Convention coming up September 5, 6, and 7.

Have a nice day!

**Enter photos of your plants in shows now.**

### BEGONIAS

Rhizomatous — Rex — Rare  
including *B. versicolor*  
and many varieties for bowls.  
Retail only — price list 10¢

**MRS. ROSETTA WHITE**

1602 N.W. Third St., Abilene, Kansas 67410

### OUT OF PRINT & DISCOUNT BOTANICAL — BOOKS

Begonia - Cacti - Bromeliads - Gesneriads

Send for Free Catalogue

**H. LAWRENCE FERGUSON**

P. O. Box 5129, Ocean Park Station  
Santa Monica, Calif. 90405



## RHIZOMATOUS BEGONIAS

By Edward and Mildred Thompson  
Southampton, N. Y.

The largest group of begonias have rhizomatous growth. At present there are over 450 different species and hybrids in this group, many of which are well-known while others are rare and grown only by collectors. It is a varied group of begonias which are grown primarily for their beautiful and interesting foliage.

*B. rotundifolia* is the oldest known rhizomatous species of begonias that is still in cultivation today. It was one of the original six species discovered by Charles Plumier in 1690 in the West Indies. *B. 'Ricinifolia'* and *B. 'Erythrophylla'* are undoubtedly the oldest known rhizomatous hybrid begonias, originating about 1850. *B. 'Ricinifolia'* originated in England. *B. 'Erythrophylla'* was developed by Joseph von Warscewicz in the Berlin Botanical Gardens. Both of these hybrids are still being grown today by many begonia enthusiasts.

Begonias in this group have rhizomes. Rhizomes are defined as thickened stems which usually have relatively short internodes. The thickness of the rhizomes vary between less than  $\frac{1}{2}$ " to over 3". Rhizomatous begonias have different growth patterns which can be divided into three main groups: creeping type rhizome, erect rhizome, and rhizome at or below the surface of the soil.

Creeping type rhizomatous begonias are those that have rhizomes which grow along the surface of the soil and often root as they grow. Usually the rhizomes go over the pot and eventually the plant takes on a

ball-like appearance with foliage covering the entire pot at maturity. At this point, if there are no bare rhizomes showing, the plant has reached its potential. Rhizomatous begonias that have the habit of erect growth in most cases will not have a ball-like appearance. Most of the foliage will be above the rim of the pot because the rhizomes grow erect.

Those that have rhizomes at the surface of the soil or below the soil usually require special care. Most in this group are not widely grown. Many of the species in this group are the ancestors of the *B. 'Rex Cultorum'* group.

The leaves of rhizomatous begonias are diverse in size and shape, representing different incisions and leaf forms. Leaf margins are varied: some have major leaf incisions; some have minor leaf incisions; while still others have both minor and major leaf incisions. These incisions are termed entire/subentire, lobed, cleft, and parted. Those termed entire have leaf margins without any incisions while those termed subentire have minor incisions. These minor incisions include those which are termed crenate, crenulate, serrate, serrulate, dentate, and denticulate. Margins termed lobed have incisions which are cut not more than one-third the distance from margin to petiole attachment. Cleft is the term used when the incisions are cut deeper, from one-third to two-thirds the distance from the margin to the petiole attachment. Margins that have inci-

sions that are more than two-thirds the distance from the margin to the place of petiole attachment, but not cut completely to the petiole, are considered parted.

Compound leaved is the term used when the basal lobes of the leaf overlap or more leaflets. The term crested margin is used when the margin of the leaf is undulate, curled and rippled. Spiral leaved is the term used when the basal lobes of the leaf overlap in such a fashion to form a spiral.

Use of these descriptive terms is important when we discuss begonias, for accurate communication is necessary to the process of learning more about our plants. These terms are particularly useful in describing rhizomatous begonias because of their diverse and interesting leaf shapes.

The size of the leaves range from under 1" to well over 18". Size of the leaves is not always relative to the eventual size of the mature plant. Naturally a plant with large leaves can never be considered a small plant but the opposite is not always true. In many cases begonias with small leaves develop into large plants.

The diversity of colors and color patterns of the leaves is the most fascinating feature of rhizomatous begonias. All shades of green and mahogany can be found. There are many different patterns of colors. There are those whose leaf coloring and/or surface are so outstanding that their distinctiveness sets them apart even in this group. These begonias of the "distinctive foliage" group usually require special care.

Most rhizomatous begonias are seasonal bloomers. Usually the blooming season occurs between mid-

winter and late spring, although there are exceptions. The height of the inflorescences vary within the group: some have flowers that are embedded in the foliage; others have flowers showing slightly above the foliage; while others have peduncles which rise well above the foliage, sometimes several feet. The amount of bloom varies and in many cases is affected by the environment.

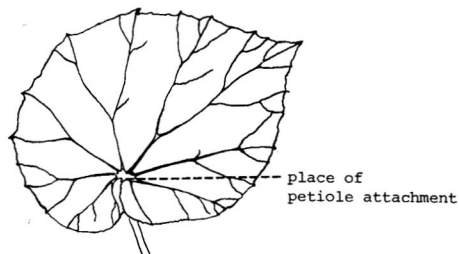
Most of the time hobbyists like to purchase their begonias as very small plants and/or prefer to propagate the plants themselves so that they can fully enjoy them from the very beginning. Many times we are not aware of the characteristics of a new begonia that we are adding to our collections.

The most important tool we have for learning how to grow specific rhizomatous begonias (or for that matter any other type begonia) is horticultural classification. If you are not familiar with a particular variety, the horticultural classification will give you the first clues for the cultural requirements. For this information consult any reliable list of horticultural classifications. After you have begun to learn about begonias, your next step should be to consult a source dealing with the general culture of the various groups.

First of all if you know that the rhizomatous begonia has a creeping type rhizome, you will know that its eventual appearance will be ball-like. If the rhizome has a habit of erect growth, you will know that most all of the foliage will be above the pot. If you have one where the rhizome is at or below the surface of the soil, you will know that it will be more

(Continued on Page 184)

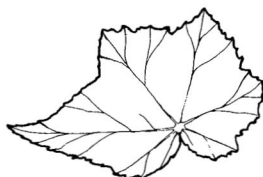
# RHIZOMATOUS BEGONIAS LEAF FORMS AND MARGINS



entire/subentire



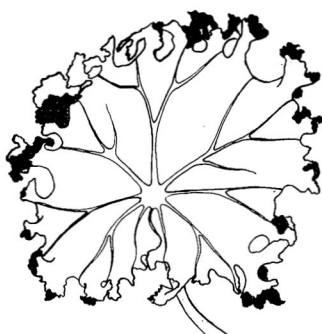
compound leaved



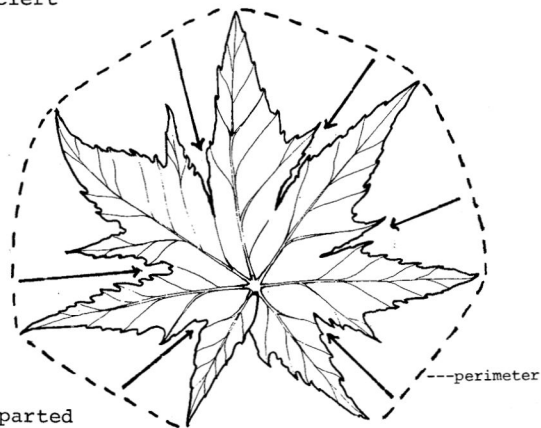
lobed



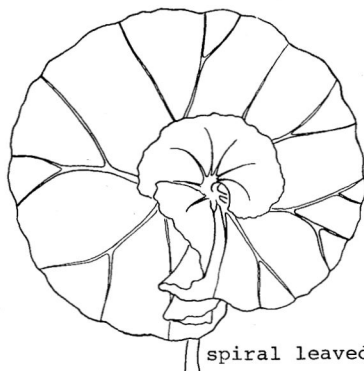
cleft



crested margin



parted



spiral leaved

Reprinted from: *The Thompson Begonia Guide*, Vol. I ©



## RHIZOMATOUS BEGONIAS

(Continued from Page 182)

difficult than others to grow and that the watering must be done very carefully. If the rhizomatous begonia is classified as one with distinctive foliage, you will know that it probably will require special care, including added humidity. Thus, these horticultural classifications will give you specific indications of what your plant will require and what it will look like. Having discovered this, you should then apply the general rules of culture for all rhizomatous begonias.

With few exceptions rhizomatous begonias enjoy cool temperatures between 58° and 72°. The humidity should range between 50% and 60%, if possible. Many of those classified with distinctive foliage require higher humidity; sometimes necessitating terrarium care.

Outdoors in summer, most require a semi-shady location which has filtered sun or a location which has a lot of light without direct sunlight. Pale foliage is an indication that the plant is getting too much light. Petioles longer than usual for the variety, indicate that there is too much shade. Change your light accordingly.

In the winter they can be grown in the greenhouse very satisfactorily. They require a lot of light of normal day length to produce blooms. Growing under lights is ideal because the lighting is always controlled and blooming can be regulated, provided all other conditions are conducive to bloom.

Watering of all rhizomatous begonias must be done very carefully.

Overwatering will cause the rhizomes to rot. It is usually better to water only when the surface of the soil is dry to touch.

Fertilizing is the most important factor in producing vigorous and healthy plants which are resistant to disease. A regular fertilizing schedule is important. Fish emulsion is an excellent organic fertilizer. Along with this, Green Thumb or Hi-Bloom answer the nutritional needs of the rhizomatous begonias as well as all other types of begonias. There are other acceptable and useful fertilizers.

Spraying for disease and insects on a regular schedule is important because it is far easier to prevent disease and insects from appearing than it is to rid the plant of them. The type of spray to use depends on the plant's growing environment. No generalization can be stated for this.

Rhizomatous begonias perform their best when they are slightly pot bound. It is always best to re-pot when the plant is root bound. At this point it should be moved only to the next size pot so that it is never over-potted. A plant which is not over-potted will be healthy and compact, and usually will bloom more satisfactorily. The potting soil that has proven to be successful for us is as follows:

- 2 parts sterile soil
- 1 part perlite
- 1 part Jiffy Mix
- 1 part sphagnum peat moss

The ideal container is the moss lined wire container. Begonias perform their best in these. The plants are more vigorous and are naturally more symmetrical without assistance from human hands. The second best

is the clay pot because it is also porous, although not to the same degree as a moss lined container. Plastic containers retain too much water and thus can cause rotting, particularly with the rhizomatous type.

Rhizomatous begonias can be propagated in several ways. They can be grown from seeds. Species will always come true from seed whereas hybrids will not. Rhizomatous begonias can be propagated very readily by using rhizome cuttings. By using this method a mature plant will be produced in a shorter period of time. However, leaf cuttings are the most popular and fascinating method of propagation for

this group. Propagation is the finest way for all of us to share our plants with others.

Rhizomatous begonias are such a rich and varied group that they offer opportunity for both beginner and expert. Trying various methods of propagating them can be almost endlessly interesting. Their culture usually is not terribly difficult, and even those that require more painstaking effort develop into such spectacular specimens that it is a great satisfaction to have accepted the challenge they present. We think that rhizomatous begonias are the most fascinating of all begonias to grow and to enjoy.

## ROUND ROBIN NOTES

Novice growers of begonias contribute as much to the robins as the more experienced. Good hints continue to pour into help all of us enjoy the robins letters more. Great fun for all those who participate — are YOU missing out?

Shirley Johnson, of Florida, lost about 90% of her first rexes from overwatering, overpotting and excessive TLC. When it appeared they would all die, she resorted to putting them among her gingers, amaryllis, ferns, etc., outside and figured that nature would handle the problem better than she. She was amazed at how huge the leaves became on *B. 'Bronze King'*, *B. 'Purple Petticoats'* and *B. 'Her Majesty'*.

June Morris of Texas put some rexes in canned-ham cans and they seem to love them. June furnished all the rex plants for the display at a local flower show; they really added color and caused much comment.

Orby Clemence of Michigan said the only trouble he has had with his rexes are mealybugs. He used to throw out every plant that developed them. Now he uses rubbing alcohol sprayed on with a fine spray about every two months and has no more problems.

Fiffi Kline, New York, uses twigs from a huge tulip tree, growing on her terrace, for staking. They show no more than other stakes she might use and the forks eliminate tying up, with the big leaves of her tuberous begonias hiding the forked twigs.

Zelma Clark of New York doesn't plant any of her tuberous begonias in garden beds, preferring to be able to move the pot about for maximum effect when they are at their peak of beauty. Also, she can control the watering, fertilizing, and staking more efficiently in pots. Watch for pictures of Zelma's garden and plants

(Continued on Page 198)

## BEGONIA EMINII

By F. O. Michelson, *Miami Branch*

I grew this begonia from seed obtained from the A.B.S. Seed Fund a few years back. This begonia grows well for us in a soil mix of peat, perlite, and sterilized soil equal parts, a handful of Milorganite and a small amount of hardwood ashes. It blooms for us April through September. The odd thing about this begonia is the round wingless seed pods that grow close to the stems about  $\frac{1}{4}$  inch from the stem. *B. eminii* is native to Africa and makes a beautiful hanging basket plant.

It took the silver and rosette for the Best Begonia by a member in the Miami Branch Begonia Show. Photo by Charles Jon Jaros

*B. eminii*



## FREE Flower Book



The better Tulips, Daffodils and myriad other bulbs to plant this fall for lovely bloom next spring are shown in our colorful, new, 48-page, Fall Flower Book.



The best of Holland-imported bulbs. Perennial seeds, seeds and plants for greenhouses, windows also listed. Hundreds of glorious full color photos.



Send a postcard today for your  
**FREE FLOWER BOOK**



**Geo. W. PARK SEED Co., Inc.**

109 Cokesbury Road  
GREENWOOD, S. C. 29647

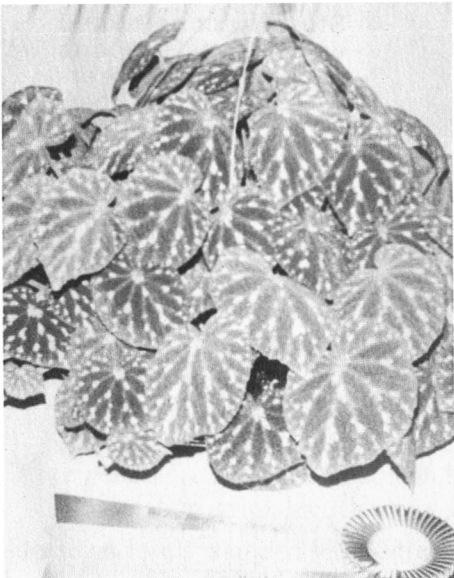




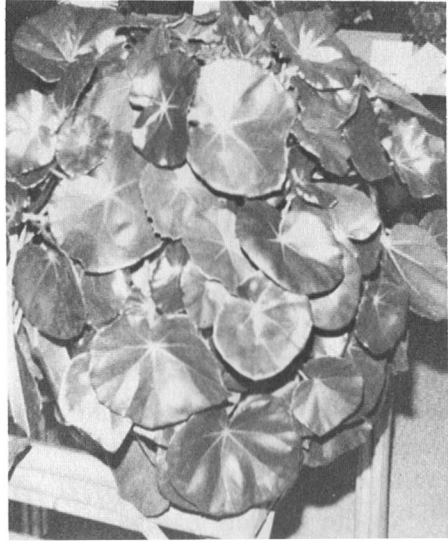
## MEN WALKED OFF WITH AWARDS FROM THE MIAMI BRANCH

The quiet beauty of Fairchild's Tropical Gardens was once again the setting for the Annual Begonia Show. It was an ideal setting with its artificial tropical rain forest and all the beautiful rare plants from all over the world.

There were 272 begonias entered, with the men taking most of the rosettes and silver. John Sousa won general sweepstakes with 35 blue ribbons. He also won Best Miniature with *B. foliosa*. Other winners were: Best Rex, *B. 'His Majesty'* and Best Rhizomatous, *B. 'Olive Milliman'*, entered by Charles Jon Jaros. Best Hanging Basket, *B. 'Silver Pustulata'*, entered by Walt Freeman Jr. Best in Show by a Member, *B. emini*, entered by Mr. Francis Michelson. Best Begonia entered by a Non-member, *B. 'Erythrophylla'* entered by Mrs. Patsy Minahan.



*B. 'Silver Pustulata'*



*B. 'Erythrophylla'*

Some 800 visitors viewed the show. Begonias, with their lush foliage, were lined up on long rows of tables. Two rows of hanging baskets were artistically arranged down the middle of the room, there were also begonias in unusual containers.

Visitors were amazed by the many varieties and beauty of the genus *Begonia*. The educational table showed different ways to propagate begonias. The members answered many questions on the culture of begonias and the best way to grow them in Miami. It was one of our most beautiful shows. Raymond Weakley was show Chairman.

Helen Jaros  
Publicity Chairman

SUPPORT OUR  
ADVERTISERS



*B. putzeysiana*

Seed Fund Offer Au 6

Photo by R. Jansen

**Create a beautiful mood** while giving *life* to your indoor garden. Elegance can also be functional as this beautiful etagere with Fleco gro-lites proves. Three shelves contain two 20-watt gro-lites, individually switched, to provide simulated sunshine for beautiful *Begonias*.



Sturdily constructed wood frame supports shelves of butcher-block vinyl over fiberboard. Available in natural or dark.

Model 6027  
60" x 25" x 11¼"  
\$165.00

Send check or Master Charge,  
BankAmericard number for  
freight ppd. Cont. USA

Automatic  
Timer \$9.95

Write for free catalog to

**fleco** INDUSTRIES  
3347 HALIFAX • DALLAS, TEXAS 75247

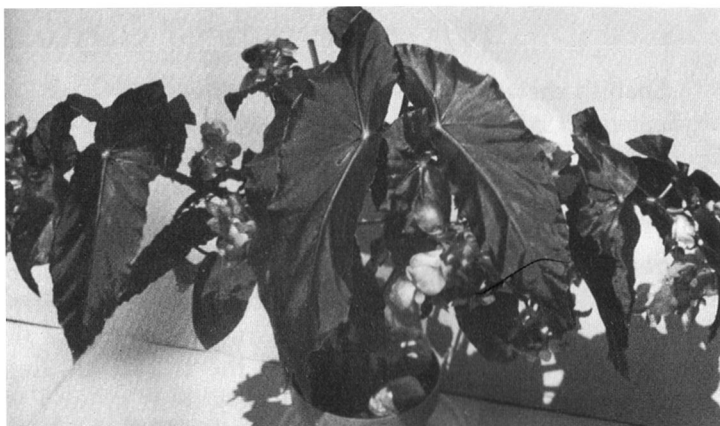
## CLAYTON M. KELLY SEED FUND

- Au 1 — *B. acida*: shrub-like, hairy-leaved, compact plant. Large seer-sucker, puckered leaves of fresh apple-green. Flowers in spring, dainty white on stems standing well above foliage .....per pkt. \$ .50
- Au 2 — *B. ludwigii*: species from Ecuador. Fibrous, upright, thick, brittle stemmed. Star shaped leaves. Does not branch out. per pkt. \$1.00
- Au 3 — *B. 'Metosa'*: cross between *B. metallica* and *B. venosa*. Bush type, can grow to over 6 feet. Leaves broad, ovate-pointed, medium green on both sides, prominent red veins, and hairy. Flowers are deep pink, and are little fuzzy balls before opening. per pkt. \$1.00
- Au 4 — *B. 'Orange Rubra'*: medium to intermediate growing slender cane. Light green, medium size, angle-wing type leaves. Makes a nice basket or wall-pocket with real orange colored drooping clusters of flowers. Seeds from this plant produce mostly pink or rose-colored blooms .....per pkt. \$ .50
- Au 5 — *B. 'Paris Market'*: a beautiful semp. Large 2" flowers rise in clusters above the apple-green foliage. Strong stemmed plants are free-flowering in red, pink and white. Best in light shade. Leaves turn red when exposed to sun .....per pkt. \$ .50
- Au 6 — *B. putzeysiana*: species from Venezuela. Low spreading shrub, with somewhat larger leaves than *B. foliosa*, and also more floriferous with larger flowers. See picture .....per pkt. \$1.00
- Au 7 — *B. santae-martae*: rhizomatous species with hairy, oval leaves. This closely resembles *B. villipetiola*, but is larger. Leaves are 7-10" usually with a few pointed lobes. Flowers are pinkish. This has been offered before as an unidentified species from Columbia.  
per pkt. \$1.00
- Au 8 — *B. schmidtiana*: species from Brazil. Fibrous, grows to 12 inches, with a bushy habit. Handsome olive-green foliage. Prolific bloomer, blossoms of white with pinkish cast. Minimum care.  
per pkt. \$ .50
- Au 9 — Species from Costa Rica: rhizomatous. Large, beautifully shaped green leaf. Large clusters of flowers on long stems. per pkt. \$1.00
- Au 10 — Mixed semperflorens: these are natural hybrids from some very good varieties. A bed of these gives you lots of color for many months. For those of you who are afraid to grow from seeds, this is a good chance to try .....Large pkt. \$ .50
- Au 11 — Mixed fibrous and rhizomatous from West Virginia: This is repeated from last November. I have some good reports from that offer .....per pkt. \$1.00
- Other genera: a limited amount of bird's nest fern spore. No other information available. Variety is unknown .....per pkt. \$ .50
- Please enclose a stamped self-addressed envelope. Make all checks or money orders payable: Clayton M. Kelly Seed Fund, and mail to: Mrs. Pearl E. Benell, 10331 Colima Rd., Whittier, Ca. 90604.

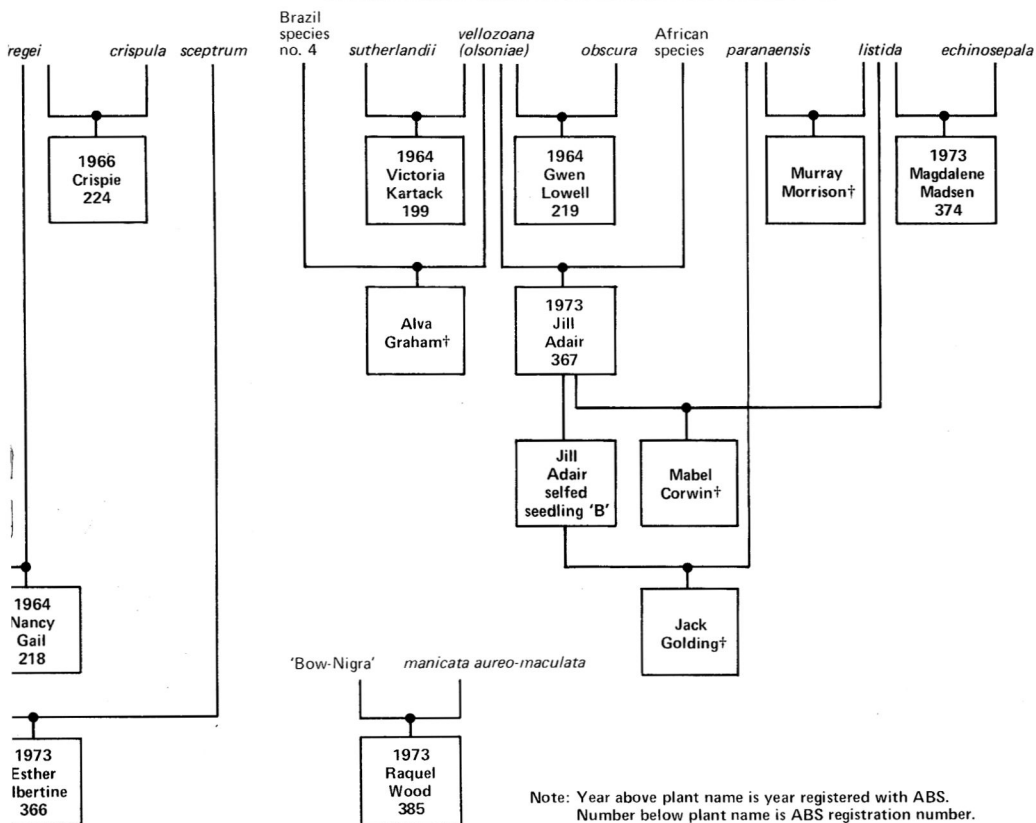




strates the parentage of  
s and supplements the  
ie. Mrs. Kusler photo-  
s at her home in Siren,



*B.* 'Barbara Ann'



**Note:** Year above plant name is year registered with ABS.  
Number below plant name is ABS registration number.

\* Not registered. Determined by Mrs. Kusler not to be up to standards.  
† Not registered as of February 1975.

†† Lenore Olivier selfed.

*Designed by Murray Morrison in 1970.  
Revised and drawn by Karen Bartholomew, February 1975.*

## 1975 CONVENTION SHOW

Spanish shawls and costumes will enliven the scene at Francisco Torres on September 5, 6, and 7, when Santa Barbara Branch of the American Begonia Society hosts the 1975 Annual Convention and Shade Plant Show. Delegates are encouraged to wear their gayest garb, in Spanish or Mexican motif, if possible.

Show officials will wear red or yellow sashes and sombreros, or colorful dresses in the traditional skirt-blouse costume of the early settlers of Santa Barbara County, or the more formal ruffled dresses of the Spanish aristocracy. Fiesta Flower Girls, who lead the traditional August Old Spanish Days Fiesta Parade in Santa Barbara, may usher at the Friday and Saturday evening galas at the Show, while formals for the banquets and award preview are being encouraged but not required.

Show Chairman .....	Mr. Fred Burgess
Show Designer .....	Mrs. Fred Burgess
Plant Acquisition .....	Mr. Clifford Lindberg
Plant Sale Cashier .....	Mr. James Trapp
Judging Chairman .....	Mrs. Margaret Lee
Classification Chairman .....	Mrs. Katharine Alberti
Plant Sale Area .....	Mr. Walter Pease
Presentation of Awards .....	Mr. Walter Pease
Show Preview Chairman .....	Mrs. Barbara Phillip
Garden Tour Arrangements .....	Mr. Ernest Thomsen and Mr. James Dodge

## 1975 AMERICAN BEGONIA SOCIETY CONVENTION PROGRAM

Thursday, September 4:

- 10 A.M.-10 P.M. Show Entries
- 1:00-6:00 P.M. Guest Registration

Friday, September 5:

- 7:00-8:00 A.M. Breakfast
- 7:30-9:30 A.M. Round Tables
- 8 A.M.-6 P.M. Guest Registration
- 10:00 A.M. Judging Starts
- 10:00-10:45 A.M. Gene Daniels, *Plant Photography Seminar*
- 11:00-11:45 A.M. Burnell Yarick, *Seminar*
- Noon-1:00 P.M. Luncheon, cafeteria or
- 1:00- 2:00 P.M. Buffet Luncheon honoring judges & clerks (Torres Room)



- 2:00- 2:45 P.M. Debi Miller — *Round Robin Seminar*
- 3:00- 3:45 P.M. Hazel Snodgrass — *Propagation Seminar*
- 4:00- 4:45 P.M. R. Ziesenhennne — *Hybridizing Seminar*
- 5:00- 5:30 P.M. ABS Board Meeting
- 6:00- 7:00 P.M. Dinner, cafeteria or
- 6:30- 8:00 P.M. Show Committee Banquet
- 8:00- 9:30 P.M. Show Preview
- 9:30 P.M. Plant Sale Preview

#### Saturday, September 6:

- 7:00- 8:00 A.M. Breakfast
- 7:30- 9:30 A.M. Round Tables
- 8:00 A.M.-Noon Guest Registration
- 8:30-11:30 A.M. Tour, Santa Barbara Orchid Estate  
& Montecito Garden
- 10 A.M.-8 P.M. Show Open to Public
- 10:00-10:45 A.M. R. Ziesenhennne — *Nomenclature Seminar*
- 11:00-11:45 A.M. Walter Hansen — *Grooming  
Begonias for Show Seminar*
- Noon-3:00 P.M. ABS Banquet Luncheon and Annual Meeting
- 6:00- 7:00 P.M. Happy Hour, Santa Ynez Terrace Room
- 7:00- 9:30 P.M. ABS Annual Banquet  
Master of Ceremonies, ABS Past President Clarence Hall  
Speaker: Rudolf Ziesenhennne, ABS since 1935  
Presentation of Awards: Walter Pease, Chairman
- 9:30-10:30 P.M. Presidents' Reception. Hosts: ABS Board of Officers,  
ABS Past Presidents, and Branch Presidents. Honored  
Guests: Mrs. Herbert P. Dyckman & Recipients of  
ABS 1975 Awards.

#### Sunday, September 7:

- 7:00- 8:00 A.M. Breakfast
- 7:30- 9:30 A.M. Round Tables
- 8:30-11:30 A.M. Garden Tours, Barbara Philip Ranch  
and Ziesenhennne Nursery
- 10 A.M.-5 P.M. Show Open to Public
- 10:00-10:45 A.M. Gene Daniels — *Plant Photography Seminar*
- 11:00-11:45 A.M. Burnell Yarick — *Seminar*
- Noon-1:00 P.M. Luncheon
- 2:00- 4:00 P.M. Round Table Discussions
- 5:00 P.M. Show & Convention Closes
- 5:30- 6:30 P.M. Dinner

#### Monday, September 9:

- 7:00- 8:00 A.M. Breakfast

\* \* \* \* \*

Please Note: Checkout Time each day for registered guests — 1 p.m.

# SHOW SPECIALS

FROM OUR COLLECTION OF OVER 600 SPECIES AND HYBRIDS

SELECT REX, RHIZOMATOUS AND FIBROUS BEGONIAS

FOR THE SHOW ONLY AS STOCK IS LIMITED: OUR LARGE ESTABLISHED 3" and 4" FULL POTS REGULARLY \$3.50 EACH OR BY THE FOLLOWING:

## SPECIAL COLLECTION #1:

5 DIFFERENT NAMED BEGONIAS OF YOUR CHOICE .....\$15.00

## SPECIAL COLLECTION #2:

10 DIFFERENT NAMED BEGONIAS OF YOUR CHOICE .....\$25.00  
(PLUS FREE BONUS PLANT ON COLLECTIONS #1 and #2)

## SPECIAL COLLECTION #3:

5 DIFFERENT NAMED BEGONIAS OF OUR CHOICE .....\$12.50

## SPECIAL COLLECTION #4:

10 DIFFERENT NAMED BEGONIAS OF OUR CHOICE .....\$20.00

ALSO ON A FIRST-COME FIRST-CHOICE BASIS WHILE THEY LAST,  
UNNAMED SURPLUS STOCK SAME SIZE AS ABOVE  
ONLY \$2.00 EACH WHILE THEY LAST.

VISIT OUR GARDENS AND ENJOY OUR BIG "JUNGLE" GREENHOUSE.  
SEE HOW PLANTS GROW IN THE WILD. EXOTICS FROM AROUND THE  
WORLD. ALSO SPECIAL OFFERINGS ON BROMELIADS AVAILABLE FROM  
OUR OWN EXTENSIVE COLLECTION.

## THE PLANT SHOP

11366 VENTURA BLVD., NO. HOLLYWOOD, CA. 91604  
PHONE (213) 980-0577 — 10 a.m. to 6 p.m. seven days

Retail only • no mail order • no shipping

## THE PLANT SHOP'S BOTANICAL GARDENS

18007 TOPHAM ST., RESEDA, CA. 91335  
PHONE (213) 881-4831

SAT. & SUN. ONLY 10 a.m. to 6 p.m.

• no mail order please •  
retail and wholesale

## WHO'S FOR THE LONER?

By Charles Richardson, *ABS First Vice President*

When I wrote the first article for members-at-large, I had no idea of the type or amount of response that I would receive. There was no deluge at the beginning, but the mail has been coming in in quantities, and I have fallen behind in answering. Most of the inquiries pertain to learning the names of a few nearby members or to requesting lists from which new branches can be formed. I have been swamped, but pleased!

I have had to reorganize the current mailing list geographically in order to answer these requests. That has been a time consuming process. Now that it is finished the mailing should be speedier.

A great many people would like

to know where they can buy plants in their areas. As yet, I do not have information to answer these questions, except in my own area. I shall try to get this information for you though.

I have had several generous offers of help in organizing branches in a couple of states, for which I am very grateful.

I have had a few suggestions about the type of questionnaire that should be sent out. If you have any ideas, please write. And, if you have written to me and I haven't answered you, please be patient.

Charles A. Richardson  
5444 Hartwick St.  
Los Angeles, CA 90041

## ATTENTION SPEAKERS:

By Debi Miller

919 Hickory View Circle, Camarillo, California 93010

### ATTENTION SPEAKERS!

For some time the American Begonia Society has needed a Speaker's Bureau—a reference for branches setting up programs for their members. It's FULL SPEED AHEAD as we move out to get one started.

The first step is the gathering together of potential speakers. The A.B.S. doesn't have a room big enough to hold all our members who could be speakers, nor can we afford to feed them until they are needed to speak. So, rather than collect all you talented people together, we're going to do the next best thing. We're compiling a notebook listing speakers, topics they speak on, fees, etc.

The next step is yours. I've put together a questionnaire that I'll send you as soon as I know you want one. All you have to do is fill it out, and you'll be included in the A.B.S. Speaker's Bureau Notebook (being listed in no way obligates you to accept any invitation to speak.)

One of the greatest things about you A.B.S. members is your willingness to step forward and participate in A.B.S. programs. Please—drop me a card and let me know you'd be interested in being in the Speaker's Bureau Notebook. I'll send you all the info, and we'll be on our way to an American Begonia Society Speaker's Bureau.

# SHOW JUDGES

By Margaret Lee, *Judging Course Director*

The American Begonia Society registers judges for flower and plant shows and maintains a list of individuals who are currently active in the judging process.

Following is the approved ABS point scoring for qualified Judges cards:

Senior Judge	50 points
Junior Judge	25 points
Sophomore Judge	Under 25 points

Points are credited as follows:

- 2 points for each year of judging
- 1 point for each show judged
- 3 points for completing ABS Judging Course
- 1/3 point for each show clerked with judges

These publications are available to all who are interested:

Complete Set, ABS Begonia Judging Course (Correspondence)	\$6.00 plus postage
Lessons in Judging Ferns, Fuchsias, African Violets and Gesneriads	1.00 each
Suggested Guide to Classification of Begonias for Show Purposes.	1.50
Point Scoring Systems for Judging Begonias	1.25

This is the current list of judges and the location of their homes. Many of them can perform as judges for other species as well as begonias. Complete information concerning judges, inquiries about judging, and requests for publications are available from:

Mrs. Margaret M. Lee  
1852 - 31st Street  
San Diego, CA 92102



## SENIOR JUDGES

Mrs. Carl Arend, Jr., Armonk, NY  
 Mrs. Pearl E. Benell, Whittier CA  
 Mrs. Ray Cronin, Wellesley Hills, MA  
 Mrs. John Grivich, Arcadia, CA  
 Mr. Michael Kartuz, Wilmington, MA  
 Mrs. Jean Kerlin, Altadena CA  
 Mr. Fred Kubisch, Culver City, CA  
 Mrs. Margaret Lee, San Diego, CA  
 Mr. Peter P. Lee, San Diego, CA  
 Mrs. Alberta Logue, Long Beach, CA  
 Mrs. Annie M. Lueck, Los Angeles, CA  
 Mr. Ben Lueck, Los Angeles, CA  
 Mrs. Peggy Mc Grath, Whittier, CA  
 Mrs. Thelma O'Reilly, La Mesa, CA  
 Mr. William Paylen, Los Angeles, CA  
 Mrs. Ruth Pease, Los Angeles, CA

Mr. Walter Pease, Los Angeles, CA  
 Mrs. Muriel Perz, Long Beach, CA  
 Mrs. Barbara Phillip, Santa Barbara, CA  
 Mr. E. O. Scherer, Los Angeles, CA  
 Mrs. Esther Scherer, Los Angeles, CA  
 Mrs. Hyacinth Smith, San Francisco, CA  
 Mrs. Hazel Snodgrass, Ventura, CA  
 Mr. Larry Stallings, Ventura, CA  
 Mrs. Margaret Taylor, Anaheim, CA  
 Mr. Edward Thompson, Southampton, NY  
 Mrs. Mildred Thompson, Southampton, NY  
 Mr. James Wyrzten, Floral Park, NY  
 Mrs. Adele Zemansky, Teaneck, NJ  
 Mrs. Margaret Ziesenhenne, Santa Barbara, CA  
 Mr. Rudolf Ziesenhenne, Santa Barbara, CA

## JUNIOR JUDGES

Mrs. Opal Ahern, Western, NE  
 Mr. Paul Lowe, Goulds, FL  
 Mrs. Alice Martin, Hawthorne, CA  
 Mrs. Arline Peck, Pascoag, RI  
 Miss Anne L. Rose, Whittier, CA

Mrs. Anne Shore, Fallbrook, CA  
 Mrs. Edna Stewart, Tarentum, PA  
 Mr. Charles Tagg, Fullerton, CA  
 Mrs. Phyllis Wright, Seattle, WA

## SOPHOMORE JUDGES

Mrs. Katherine Alberti, Hollywood, CA  
 Mr. Walter Barnett, West Covina, CA  
 Mrs. Esther Blasko, Temple City, CA  
 Mrs. Annette Boree, Great Neck, NY  
 Mrs. Iris Cohen, Liverpool, NY  
 Mrs. Marie Donnelly, Rockville Centre, NY  
 Mrs. Eleanor Fariss, Seattle, WA  
 Ms. Irene Fediaczko, Butler, PA  
 Mrs. Frances Hoffman, Northport, NY

Mrs. Letitia Isner, Williamstown, WV  
 Mr. Grant Mc Gregor, Ottawa, Ontario  
 Mr. Elton Mc Whorter, Columbia, SC  
 Mr. Chas. Richardson, Los Angeles, CA  
 Mrs. Joan Rockney, Fairbanks, AK  
 Mrs. Eleanor Slee, Butler, PA  
 Mr. Wallace Wagner, Silverton, OR  
 Mrs. Nellie Weaver, Huntington Park, CA

- ★ Hormex Rooting Powder
- ★ Plastic Pots - by the dozen
- ★ Polypropylene Shade Cloth
- ★ Polyethylene Film

**PARAMOUNT PERLITE CO.**  
 (213) 633-1291  
 P.O. BOX 83-B,  
 PARAMOUNT, CA. 90723

BEGONIAS, GERANIUMS, EXOTICS  
 FERNS, OXALIS, CACTI, HERBS

1974 - 1976 Catalog with Color — \$1.00

**LOGEE'S GREENHOUSES**

(Est. 1892)

55 North Street, Danielson, Connecticut 06239

**GRO-LUX LAMPS—BLACK LIGHT**

All sizes of lamps and fixtures  
 for residence or business.

**FLUORESCENT TUBE SERVICE**

13107 S. Broadway, Los Angeles, Calif. 90061

Phone (213) 321-6900

## ROUND ROBIN

(Continued from Page 185)

in various magazines and books.

Pat Burdick, Minnesota, had tried growing purchased fern spore with no luck. After reading an article on growing ferns from spores, she went out to the greenhouse and scraped off spores on all the ferns that had them. She put them in a little bowl under lights. When the green showed, she misted them again and again. Now she has so many ferns she doesn't know what to do with them, although she can't tell which they are. She said they are lots of fun.

Debi Miller, California, "dwarfs" begonias by starting leaves in potting soil in VERY small pots (2" or liners). When the little plants come up, she cuts off the big leaf that they were propagated from (or wedges, which she uses a lot) and leaves the small plants in the 2" pot. She feeds only when leaves start to yellow. She did *B. 'Wanda'* this way, quite by accident, and *B. olsoniae*. *B. 'Wanda'* only stayed small for four or five months, then leaves started getting larger. *B. olsoniae* has been very small for almost a year now and so far hasn't shown any signs of wanting to get larger.

The new photography robin just made the first round and the pictures were beautiful. Slides and pictures are included in other robins at times, making them all the more interesting.

If you haven't joined the robins, why not write me now?

Mrs. Mae Blanton  
Round Robin Director  
118 Wildoak Drive  
Lake Dallas, Texas 75065

## CALENDAR

August 8-10 — Eastside Begonia Club Eleventh Annual Flower Show. Theme: Hanging Gardens of Bellevue. Place: Bellevue Square Pavilion. Bellevue, WA. Times: Friday 8th, 1 to 9 p.m., Sat., 9th, 10 a.m. to 7 p.m. and Sun., 10th from 10 a.m. to 5 p.m. Rare plant material available at sales booth.

August 10th, 1 p.m. to 4:30 p.m. The Annual Garden tour of the Theodosia Burr Shepherd Branch of the American Begonia Society. Tour starts at the home of Mr. and Mrs. Maurice Warwick, 796 Utica Street, Ventura. Public invited — no charge. Maps provided.

August 12 — Glendale Branch "Mini-Show". Entries will be judged and "Best in Show" awarded. Ruth Pease will be Speaker. 8 p.m. at Glendale Federal Savings, 401 N. Brand, Glendale, CA.

August 12 — The Alfred D. Robinson Branch "Birthday Mini-Show" commemorating the branch's 33rd anniversary. Show of begonias, Casa del Prado, room 104, Balboa Park, San Diego, CA. 10:30 a.m. to 3 p.m. Public invited. Admission free.

August 22—Redondo Area Branch 6:30 p.m. at Dana School, 135th Street and Aviation Blvd., Hawthorne, Calif. Jitney Dinner (Bring your own table service). Round Table Discussion. Visitors welcome. Door Prizes, Refreshments, Plant Table.

### PUBLICATION NOTICE

*All material for publication — articles, notices, photographs — should be sent to the Editor, preferably five weeks before date of publication. Deadline is the first of the month preceding month of publication.*

## PRESIDENT'S MESSAGE

Unpaid volunteer workers for the American Begonia Society and possible entitlement to income tax credit for donations to further our educational and scientific purposes have engaged my thought for some time.

The American Begonia Society is at a critical time in its history as are many other institutions which have been thriving for many years. Government surveillance of the activities of so-called non-profit organizations and the moral fibre of the organization itself will test our aims, purposes, and performances. We were organized on a solid foundation with proper steps taken with the California State agency in charge of corporations, the Franchise Tax Board, and the federal Internal Revenue Service regarding income tax reports required of non-profit organizations.

Because it appeared our volunteer workers might be entitled to certain personal deductions on their individual income tax returns, about a year ago we applied to the Franchise Tax Board for income tax exemption (educational and scientific.) Due to delays for which the state officials are not responsible, we did not hear until recently that the Franchise Tax Board is holding up the determination of our exemption for six months pending a determination by the Internal Revenue Service.

A representative of the Franchise Tax office in Sacramento explained that it will be difficult to convince the IRS that the ABS is entitled to the charitable status because charitable donations and other funds might become commingled. It ap-

peared to him preferable for ABS to set up a separate corporation for the purpose of receiving and disbursing the non-profit, charitable funds, such as funds received for research, non-enclature, and publications. I was in favor of this because I have recently had inquiries from ABS members who are well able to contribute to these funds but will not because we are not organized for charitable purposes and they would not be entitled to tax credit according to our present ruling. Since at a recent ABS Board meeting several directors indicated little interest in anything but a strictly garden-club-type organization, I am convinced it is a lost cause. I will leave it up to the deeper thinkers in the membership as to what the next step will be.

Under our present exemption as a horticultural society we do not have to pay income tax on the profits from our plant sales, seed fund, library, or other activities related to our exemption. We can have employees and reimburse our volunteer workers for their official mileage, telephone calls, postage, and out-of-pocket expenses for supplies and materials, but they cannot take these as a deduction on their own income tax returns if they are not reimbursed.

Under neither non-profit status is there a tax credit for hours spent working for the organization so the volunteer not reimbursed by the ABS travels, pays postage, buys necessary materials, makes phone calls, and works many hours without even a possibility of deductions on his income tax return.

Organizations are finding it increasingly harder to find volunteers in the secretarial and clerical field. They are having to compete with government and industry for these services which are in short supply. We have gratefully received the donated services of excellent corporation secretaries for many years; membership and circulation secretaries worked many years without compensation, as have the directors for the Library, Advertising, Business Management, Slide Library, Round Robin, Nomenclature, Public Relations and Research, all spending countless hours without expectation of return other than the vicarious satisfaction of doing well for others. The Seed Fund Director has received a small percentage of the income from her ABS activities. We pay our Editors a token amount and we know that our Membership Secretary and the *Begonian* printer are giving us liberal discounts although they are self-employed; they

appreciate the worth of our small organization. Through the years the ABS has gained prestige through the services of these volunteers; in the future, with rising costs, more complicated duties, and possible restrictions on travel, it may be more difficult to carry on with unpaid, volunteer workers. We are maturing. Do we wish to remain a garden club or shall we take the responsibility and advantage of the professional challenges ahead? Will you let me know what you think?

We hope to see many of you at the Annual Members Meeting of the American Begonia Society, Saturday afternoon, September 6, at Francisco Torres, Storke (offramp of Highway 101 north of Santa Barbara) and El Colegio Roads. There will be events on Friday and Sunday, too, so try to plan a full three-day visit at our 1975 ABS Convention and Show — all under one roof! (See July and elsewhere in this *Begonian* for details!)

### GREEN HILLS NURSERY

Exotic & Hardy Ferns  
Open Saturdays and Sundays  
10 a.m. to 4 p.m. or by appointment  
Price List 10¢

2131 Valjejo Street St. Helena, Calif. 94574  
Mrs. E. Bolduc

*Palos Verdes*

**Begonia  
Farm**

4111 - 242nd St., Waleria, Ca. 90505

### TUBEROUS BEGONIAS

COMPLETE SELECTION OF BEGONIAS  
AND SHADE PLANTS

FUCHSIAS—CAMELLIAS—FERNS

OPEN DAILY

Complete Nursery & Garden Supply Shop  
1½ Miles E. of Redondo Beach  
Hwy 101

### WYRTZEN EXOTIC PLANTS

Specializes in Gesneriads and Begonias

260-01 87th Avenue (same as 165 Bryant Ave.)

Floral Park, N.Y. 11001

Phone 212-347-3821 before coming

NO MAIL ORDER

Plants sold at house only

### ANTONELLI BROTHERS

2545 Capitola Road

SANTA CRUZ, CALIFORNIA 95060

36-page color catalog 25 cents

## CONDENSED MINUTES BOARD MEETING JUNE 23, 1975

The regular meeting of the American Begonia Society Board of Directors was called to order by President Margaret Ziesenhenné at 8 p.m., June 23, 1975, in South Gate Auditorium. Rudolf Ziesenhenné was appointed acting secretary.

Present were Messrs. & Mmes. Paul Lee, Walter Barnett, Charles Richardson, Ralph Corwin, Gilbert Estrada, Ziesenhenné, Ernest Krupnick; Messrs. Earl Hough, James Dodge; Mmes. Wanda Elin, Pearl Benell, Katharine Alberti, and Margaret Taylor. A quorum was announced.

Ziesenhenné read the minutes of the meeting of May 17, 1975 in Santa Barbara; Treasurer Barnett objected to an announced quorum for that meeting, disqualifying directors from Glendale, North Long Beach, and Santa Barbara branches. As there were no motions that could not be taken care of at the present meeting, there was no debate as to the qualifications of the representatives. The minutes were approved as corrected.

Ziesenhenné read the minutes of the April 28 meeting which were approved as read.

**CORRESPONDENCE:** Resignation of Fred A. Barkley as National Public Relations Director was read. Under new business the resignation was accepted with regret.

**BILLS TO BE PAID:** Business Manager Estrada's bill for \$81.53 was presented by the treasurer, who made a motion that it be paid; motion seconded and carried.

Barnett presented his 10/73 to 7/74 telephone call bill in amount of \$90.33 for approval; motion made, seconded, and carried that bill be paid.

Barnett read the treasurer's report for the periods ended 5/17/75 and 6/18/75. Balances shown in the May 17 approved minutes agree with the report read. Report for month ending June 18 showed: balance on hand \$1901.11; receipts \$1,857.81; disbursed, \$2,060.52; balance on hand 6/18/75, \$1,698.40. Treasurer said he would report amounts in savings accounts and other funds after the interest has been posted at the end of June.

Motion was made by Estrada to validate the bill of \$90.00 for extra March 1975 *Begonians* needed because of shortage caused by late renewals; motion seconded and carried.

There was a discussion of the possible purchase of old *Begonians* for the ABS library; Nomenclature Director Ziesenhenné reported the Book Den in Santa Barbara had a set of old *Begonians* which are offered for sale at 35c apiece; he was authorized to suggest that the Book Den contact the ABS librarian regarding her need for the books.

A report of the balance available for officers' travel in connection with the two September conventions; balance in savings account earmarked for this purpose is \$563.33, interest to be added June 30.

### REPORTS OF OFFICERS

First Vice President Richardson reported on progress with members-at-large; he has had satisfactory response from his appeal in the *Begonian*, including an invitation from a Texas branch.

Judging Course Director, Mrs. Lee, agreed that 500 overprints of the show schedule in the July *Begonian* should be ordered; she is to inform the editors of the *Begonian*.

Advertising Manager Corwin has sent out advertising solicitation; a one-time ad from Flecco Industries for just over a half page has been received. Quarter-page ads from Park Seed Co. are to appear in August, September, and October *Begonias*.

Circulation Managers Krupnick reported 4149 *Begonians* mailed in June; total members 3845.

Business Manager Estrada reported attempts to contact John Provine regarding files he has for storage.

Question as to whether ABS State of California Franchise Tax number may be used for branch plant sales was answered negatively.

Mrs. Lee reported that she had sold one judging course, six point scoring booklets, and seven classification books for a total of \$25.00; expenses \$4.85 postage and materials and \$14.77 printing judges list; net \$5.38.

Acting secretary read reports of Research Director and Round Robin Director. He also gave Dr. Barkley's new address in Honduras.

Representative of the Show Committee Dodge reported on posters, mailers, and hand-out cards, which he had prepared for national convention and show advertising; board members were urged to take the material and to distribute it; more are available from Show Chairman Fred Burgess. Dodge reported on seminars, garden tours, and the show; understanding was reached with board regarding manning tables for membership, seed fund, slide library, etc.; the show and convention committee promised to provide systematic replacements and relief.

Slide Librarian reported receiving the Edward Thompson gift of slides, tapes, and other materials.

### BRANCH REPORTS

Whittier Branch Director Earl Hough reported the death that morning of Gertrude Windsor, former member of the Board and sister of Anne Rose, Whittier Branch secretary. Reports were given by directors from the following branches: Glendale,

(Continued on Page 203)



# BRANCH DIRECTORY

VISITORS ARE ALWAYS WELCOME AT THESE MEETINGS

## BUXTON BRANCH

3rd Saturday, Homes of Members  
Mrs. Raymond C. Cronin, Secy  
88 Ledgeways, Wellesley, Mass. 02181

## CONNECTICUT BRANCH

4th Sunday of each month  
Mrs. Priscella Beck, Secy.  
R D No. 1, Box 121,  
Mystic, Conn. 06355

## EAST BAY BRANCH

3rd Thursday, 7:45 p.m.  
Northbrea Community Church, Berkeley, Ca.  
Ms. Julia Huwe, Secy.  
473 Albemarle St., El Cerrito, Ca. 94530

## EASTSIDE BRANCH

4th Wednesday, 7:30 p.m.  
590 116th Avenue N.E., Bellevue, Washington  
Diane McElroy  
9010 209th Ave., N.E., Redmond, Wash. 98052

## EDNA STEWART PITTSBURGH BRANCH

3rd Wednesday, 8:00 p.m.  
Phipps Conservatory  
Beverly Coyle, Corr. Secretary  
144 McCurdy Drive, Pittsburgh, Pa. 15235

## EL MONTE COMMUNITY BRANCH

3rd Friday, Members' Homes  
Mrs. Gladys Mattuket, Secy.  
1801 Azalea Drive, Alhambra, Calif. 91801

## FORT, ELSA BRANCH

1st Saturday, 1:00 p.m.  
Miss Lola Price, Secy.  
628 Beach Ave., Laurel Springs, N.J. 08044

## GARDEN GROVE BRANCH

3rd Thursday, 7:30 p.m.  
Sunnyside School  
9972 Russell Ave. at Brookhurst, Garden Grove, Ca.  
Loretta Stocks, Sec'y.  
2668 Redlands Drive, Costa Mesa, Ca. 92626

## GERALDINE DALY BEGONIA BRANCH

1st Saturday, Homes of Members  
Mrs. Arline G. Peck, Secy.  
Eagle Peak Road, Pascoag, R.I. 02859

## GLENDAL BRANCH

2nd Tuesday, 8:00 p.m.  
Glendale Federal Savings, 401 N. Brand  
Mrs. Katharine Alberti, Secy.  
3322 Troy Drive, Hollywood, Calif. 90068

## GREATER BATON ROUGE BRANCH

Mrs. John H. McKay, Secy.  
5116 Baton Rouge Ave., Baton Rouge, La. 70805

## GREATER ROCHESTER BRANCH

Third Sunday, Members' homes  
Thea S. Tweet, Secy.  
280 Weymouth Dr., Rochester, N. Y. 14625

## HAMPTON BRANCH

2nd Monday, 7:45 p.m.  
Parrish Memorial Hall, Southampton, N.Y.  
Mildred L. Thompson  
310-A Hill Street, Southampton, N.Y. 11968

## HOUSTON TEXAS BRANCH

2nd Friday, 10:00 a.m.  
Garden Center, 1500 Herman Drive  
Mrs. B. A. Russell, Secy.  
5926 Jackwood, Houston, Texas 77036

## KNICKERBOCKER BRANCH

2nd Tuesday, 7:30 p.m.  
Horticultural Society of New York  
128 West 58th St., New York  
Samantha G. Langer, Secy.  
361 East 50th Street  
New York, NY 10022

## LONG BEACH PARENT CHAPTER

2nd Sunday, 1:30 p.m.  
Great Western Sav. and Loan Bldg.  
6300 E. Spring St., near Palo Verde  
Long Beach, California 90818  
Miss P. E. Powell, Secy.  
3031 Shakespeare Dr., Los Alamitos, Ca. 90720

## LONG ISLAND BRANCH

2nd Wednesday, 8:00 p.m.  
Planting Fields Arboretum  
Oyster Bay, Long Island, N.Y.  
Mrs. Decise Barthold, Corr. Sec'y.  
248 Manor Road, Douglaston, N.Y. 11363

## MESQUITE BRANCH

1st Tuesday, 10:30 a.m., Members homes  
Mrs. Mae Blanton, Secy.  
118 Wildoak Drive, Lake Dallas, Texas 75065

## MIAMI BRANCH

4th Tuesday, 8:00 p.m.  
Simpson Memorial Garden Center  
55 South West 17th Road, Miami, Florida  
Mrs. Alma Crawford, Secy.  
14250 Madison St., Miami, Florida 33158

## MISSOURI BRANCH

3rd Friday, 11 a.m., Member's Homes  
Kansas City, Mo.  
Mrs. Glenn Lucas, Secy.  
Kansas City, Mo. 64109

## MONTEREY BAY AREA BRANCH

4th Wednesday, 8:00 p.m.  
Lighthouse and Dickman Sts., New Monterey, Calif.  
Mrs. Mary Peterson, Sec'y.  
24522 Pescadero Rd., Carmel, CA. 93921

## NORTH LONG BEACH BRANCH

2nd Tuesday, 7:30 p.m.  
Mercury Savings and Loan Assn.  
4140 Long Beach Blvd., Long Beach  
Miss Carol Ruane, Secy.  
2133 Pacific Ave., Long Beach, CA 90806

## ORANGE COUNTY BRANCH

2nd Thursday, 7:30 p.m.  
First Christian Church,  
1130 E. Walnut Street, Orange, California  
Mrs. Norma Taylor, Secy.  
2414 N. Bristol, Santa Ana, Ca. 92667

## PORTLAND BRANCH

Mrs. Otelia Klobas, Secy.  
35330 S.E. Dunn Rd., Boring, Ore. 97002

## REDONDO AREA BRANCH

4th Friday, 7:30 p.m.  
R. H. Dana School Cafetorium  
135th St. and Aviation Blvd., Hawthorne, Calif.  
Mrs. Susan Shaner, Secy.  
5026 W. 122nd Street, Hawthorne, Calif. 90250

## ROBINSON, ALFRED D. BRANCH

2nd Tuesday, 10:30 A.M. Homes of Members  
Juana Curtis, Secy.  
4107 Taos Dr., San Diego, Ca. 92117

## RUBIDOUX BRANCH

4th Thursday, 7:30 p.m., West Riverside Memorial Hall  
4393 Riverside Drive, Rubidoux, Ca.  
Mrs. Cindy Gray, Secy.  
22601 Whittier Street, Colton, CA 92324

## SACRAMENTO BRANCH

3rd Tuesday, 8:00 p.m., Garden Center  
3300 McKinley Blvd., Sacramento, Calif.  
Mrs. Beverly Bartlett, Secy.  
725 36th Street, Sacramento, Ca. 95816

**SALINE COUNTY BRANCH OF KANSAS**

4th Monday, 1:30 p.m., Homes of Members  
Mrs. Jesse B. Harper, Secy.  
Route 3, Salina, Kansas 67401

**SAN FRANCISCO BRANCH**

1st Wednesday, 8:00 p.m., Garden Center  
Golden Gate Park, 9th Avenue and Lincoln Way  
Mrs. H. C. Banks, Secy.  
1279 35th Ave., San Francisco, Ca. 94122

**SAN GABRIEL VALLEY BRANCH**

2nd Tuesday, 7:30 P.M.  
Los Angeles State and County Arboretum  
501 N. Baldwin Ave., Arcadia, Calif.  
Mrs. Elizabeth Stuart, Secy.  
169 Mauna Loa Dr., Monrovia, Ca. 91016

**SAN MIGUEL BRANCH**

1st Wednesday, 7:30 P.M.  
Casa del Prado (Rm. 104)  
Balboa Park, San Diego  
Mrs. Nova Gillis, Secy.  
11885 Walnut Rd., Lakeside, Ca. 92040

**SANTA BARBARA BRANCH**

2nd Thursday, 7:30 p.m.  
Santa Barbara Museum of Natural History  
2559 Puesta Del Sol  
Mrs. Patricia Hill, Secy.  
1339 Mission Ridge Road, Santa Barbara, Ca. 93103

**SANTA CLARA VALLEY BRANCH**

4th Thursday, 8:00 p.m.  
Covington School  
Covington Rd. near Foothill Expressway and  
El Monte Road in Los Altos  
Mrs. Elizabeth K. Sayers, Secy.  
369 Ridge Vista Ave., San Jose, Ca. 95127

**SEATTLE BRANCH**

3rd Tuesday, 7:00 P.M.  
Bethany Lutheran Church, 7400 Woodlawn Ave. N.E.  
Janeen Lynch, Secy.  
8248 16th N.E., Seattle, Wash. 98115

**SHEPHERD, THEODOSIA BURR BRANCH**

1st Tuesday, 7:30 p.m.  
Senior Citizens Bldg., 420 Santa Clara St.,  
Ventura, Ca.  
Mrs. Bernice Barker, Sec'y  
3316 Porter Lane, Ventura, Ca. 93003

**SOUTH SEATTLE BRANCH**

4th Tuesday, 7:30 p.m., Wm. Moshier Field House  
430 South 156th Burien  
Mrs. Viva Musgrave, Secy.  
11447 12th Ave., Seattle, Wash. 98146

**TAMPA BAY AREA BRANCH**

Mrs. Grace McDougall, Secy.  
Plum St., Inverness Highlands  
Inverness, Florida 32650

**TARRANT COUNTY BRANCH**

2nd Monday, 10:00 a.m., Bank of Fort Worth  
Mrs. Richard Ellis, Secy.  
2117 Hillcrest, Ft. Worth, Texas 76107

**TEXASTAR BRANCH**

3rd Thursday, 10 a.m., Garden Center  
1500 Herman Dr., Houston, Texas  
Mrs. V. O. Harman, Secy.  
306 Cody, Houston, Texas 77009

**WESTCHESTER BRANCH**

1st Thursday, 7:30 p.m., Westchester Women's Club  
8020 Alverstone Ave., Los Angeles, Calif.  
Barbara Mack, Secy.  
424 Oregon St., El Segundo, Ca. 90245

**WESTERN PENNSYLVANIA BRANCH**

2nd Wednesday 11:00 a.m. every month  
Pittsburgh Garden Center, 1059 Shady Ave.,  
Pittsburgh, Pa.  
Mrs. Alfred Slee, Secy.  
211 Arlington Ave., Butler, Pa. 16001

**WHITTIER BRANCH**

1st Thursday, 7:30 p.m.  
Palm Park Community Center  
5703 South Palm Avenue, Whittier  
Miss Anne Rose, Secy.  
14036 Ramona Drive, Whittier, Calif. 90605

**WILLIAM PENN BRANCH**

4th Tuesday, Noon Homes of Members  
Mrs. John W. Watson, Secy.  
209 Pembroke Ave.  
Wayne, Pa. 19087

*Note to branch secretaries: please promptly notify the editors of changes in meeting place, date, and changes in secretary's name and address.*

**MINUTES**

(Continued from Page 201)

Redondo Area, Santa Barbara, Orange County, Westchester, and San Miguel.

**OLD BUSINESS**

Mrs. Lee moved that the motion in the May 17 minutes regarding the welcome letter to new members of ABS be validated so that it may accompany new membership cards and begonia seed gift; motion seconded and passed unanimously.

The second motion in the May 17 minutes regarding the appointment of a special committee requested by the president, called the Finance Advisory Committee with Business Manager Estrada as chairman, was made by Edith Krupnick; motion seconded and carried.

Arnold Krupnick moved that the ABS pay one-quarter of the air fare of Rudolf Ziesenhenne to attend the Plant Registration Workshop as a guest of the American Horticultural Society at Mount Vernon, Va., on August 12; motion seconded and carried.

Treasurer Barnett reported on his findings as to federal and state tax liability of the American Begonia Society and announced his intention to resign as of September 1, 1975; he will submit a written resignation. Mrs. Benell eulogized the treasurer for his great work done during his nine years' service.

Barnett moved that the monthly payments to the president, secretary, and treasurer be reduced from \$25.00 per month to \$15.00 per month for the president, nothing for the secretary, and \$15.00 per year for the treasurer; the motion was seconded and carried by a show-of-hands vote.

The meeting was adjourned at 10:40 p.m.

Minutes condensed by Rudolf Ziesenhenne, Acting Secretary.

Please contribute slides of Begonias to the A.B.S. Slide Library.

**SECOND CLASS MAIL**  
American Begonia Society  
11506 McDonald  
Culver City, California 92030  
Return Postage Guaranteed

**BEGONIAS  
HOUSE and GARDEN PLANTS**

*Send for List—10c*

**ROUTH'S GREENHOUSE**  
Louisburg, Missouri 65685

**AFRICAN VIOLETS - BEGONIAS - EPISCIAS**

Cuttings only — Violets 30¢  
Episcias 35¢, Rex leaves 35¢  
All other Begonias 45¢  
Stamp for list

**WILSON'S GREENHOUSE**  
Route 1 - Box 165-4, Ozark, Mo. 65721

**LEARN ABOUT FERNS**

Join the

**LOS ANGELES INT'L FERN SOCIETY**

Membership only \$4.50 per year  
12-page Bulletin and 2-page lesson monthly  
100-page Fern Annual Magazine

2423C Burritt Ave., Redondo Beach, CA 90278

**BEGONIAS**

REX BEGONIA SEED — \$1.00 per pkt.

**RUDOLF ZIESENHENNE**

1130 North Milpas Street  
SANTA BARBARA, CALIFORNIA 93103

Gloxinias—African Violets—Begonias  
Varieties which thrive under  
fluorescent light  
New Catalogs—50¢

**KARTUZ GREENHOUSES**

Dept. B—92 Chestnut Street  
Wilmington, Massachusetts 01887

**BEGONIAS, GERANIUMS, HOUSE PLANTS**

(Cuttings)

Extensive List 20¢ Cash or Stamps  
Since 1956

**RAINBOW BEGONIA GARDENS**

Post Office Box 991  
Westminster, CA 92683

**GIVE YOUR PLANTS A BREAK!**

try

**SPOONIT**  
  
**plant food**

All-Purpose Fertilizer

HIGHLY CONCENTRATED,  
instantly soluble.

Also

**ORCHID SPOONIT**  


For Orchids in Bark

Both available in leading nurseries in California; also in Arizona and some areas of Hawaii, Nevada, Texas, Utah and Washington.

Write for free sample and brochure containing helpful hints, sizes, prices

**Plantsmith®**

P. O. Box 2224-T  
Menlo Park, California 94025