

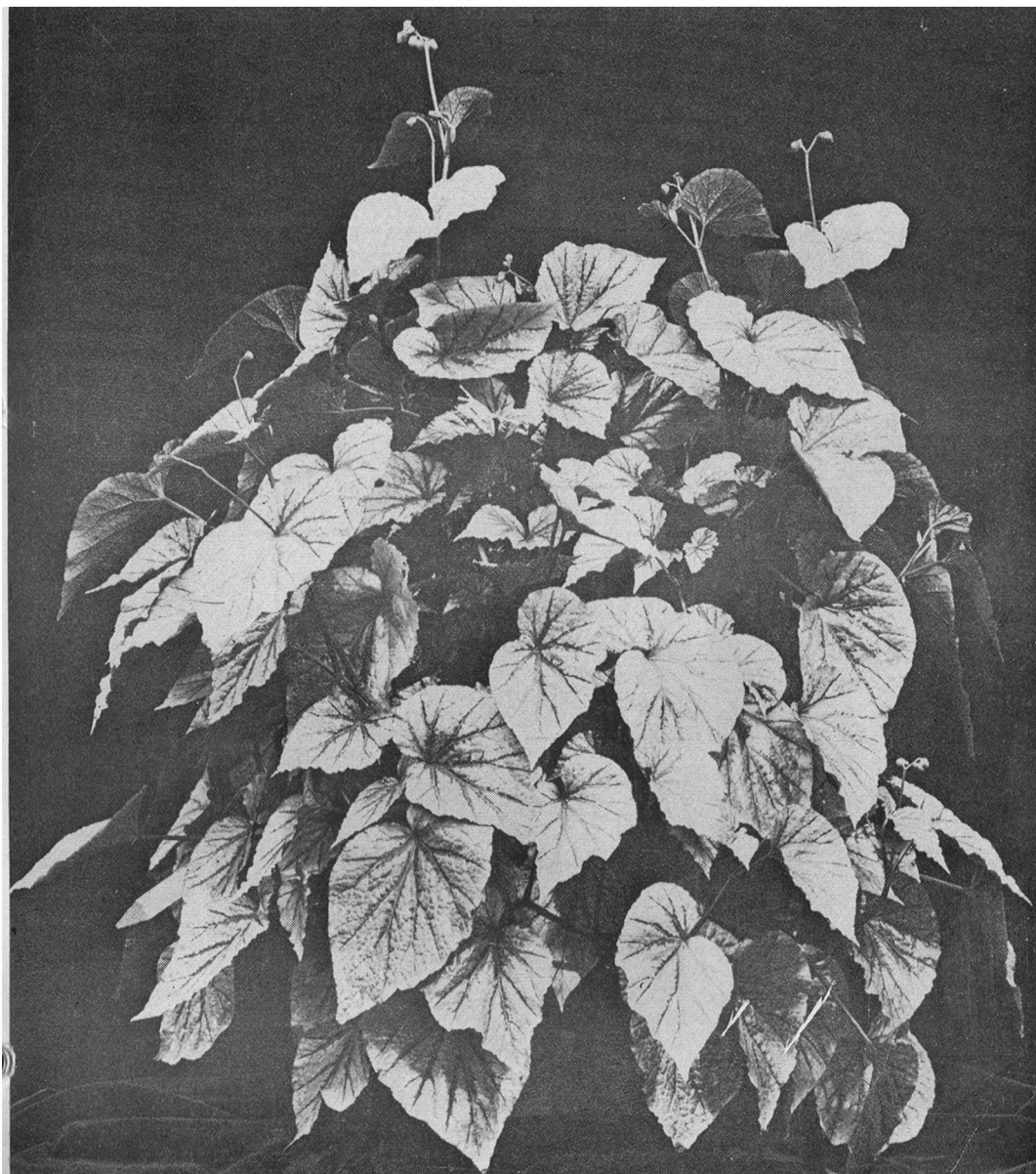
The Begonian

DEVOTED TO THE SHELTERED GARDENS

July, 1961

PRICE 25 CENTS

VOLUME XXVIII, NUMBER 7



Editor N. Trumond Peterson, 1641 W. 125th St., Los Angeles 47, Calif.
Advertising Manager George Schlanert, 13611 Wheeler Pl., Santa Ana, Calif.

Copyright 1961 by the American Begonia Society, Inc.—Affiliated with The American Horticultural Society, The American Horticultural Council, and The Los Angeles State and County Arboretum.

General Offices, Dues, Address Changes or Magazines:

Dorotha Waddington, Membership Secretary, 1135 N. Kenter Ave., Los Angeles 49, Calif.

Annual Subscription, \$2.50. Branch members pay dues to branch. Foreign rate, including Canada \$3.00. Air mail rate within U.S. \$4.50.

Entered as second-class matter at the Post Office of Los Angeles, California, under the act of March 3, 1879.

AIMS AND PURPOSES OF THE AMERICAN BEGONIA SOCIETY, INC.

The purpose of this Society shall be: to promote interest in begonias and other shade-loving plants; to encourage the introduction and development of new types of these plants; to standardize the nomenclature of begonias; to gather and publish information in regard to kinds, propagation and culture of begonias and companion plants; to issue a bulletin which will be mailed to all members of the Society; and to bring into friendly contact all who love and grow begonias.

ELECTED OFFICERS

President Mrs. Edna L. Korts
3628 Revere Ave., Los Angeles 39, Calif.
President-Elect George Schlanert
13611 Wheeler Pl., Santa Ana, Calif.
Past President Clarence Hall
17153 Sunburst St., Northridge, Calif.
Secretary Mrs. Margaret B. Taylor
111 Evelyn Drive, Anaheim, Calif.
Treasurer Mrs. Leona H. Cooper
4958 Canoga Ave., Woodland Hills, Calif.
Vice-Pres. 1 yr. Mrs. Nancy Alvord
48 W. Norton Rd., Quincy 69, Mass.
Vice-Pres. 2 yrs. A. Roy Joyce
1435 Coronado Ter., Los Angeles 26, Calif.
Vice-Pres. 3 yrs. Esther Long
5416 Dana Way, Sacramento 22, Calif.

APPOINTED OFFICERS

Editor N. Trumond Peterson
1641 W. 125th St., Los Angeles 47, Calif.
Eastern Editor Mrs. Bernice Brilmayer
c/o D.C.S. & S. Inc.
530 Fifth Ave., New York 36, N.Y.
Membership Secretary . . Dorotha Waddington
1135 N. Kenter Ave., Los Angeles 49, Calif.
Advertising Manager George Schlanert
13611 Wheeler Pl., Santa Ana, Calif.

National Board meets 4th Monday, 7:30 p.m., South Gate City Auditorium, 4900 Southern Ave.

Awards Committee . . Mrs. Hazel Snodgrass
265 N. Walnut Dr., Ventura, Calif.

Flower Show Chairman Albert J. (Bert) Slatter
4600 Sixth Ave., Los Angeles 43, Calif.

Historian Mrs. Lola E. Fahey
4943 Fiesta Ave., Temple City, Calif.

Identification Garden John Thieben
6409 Will Rogers St., Los Angeles 45, Calif.

Librarian Mrs. Lucy A. Sault
58 Dapplegray Lane, Rolling Hills Estate, Calif.

Nomenclature Director . . Mrs. Alva Graham
258 Pearl St., Pasadena, Calif.

Parliamentarian Mrs. Minn Slatter
4600 Sixth Ave., Los Angeles 43, Calif.

Round Robin Chairman Mrs. Herbert E. Hurley
11 Woodland Road, Lexington, Mass.

School of Judging Mrs. Edna L. Korts
3628 Revere Ave., Los Angeles 39, Calif.

Research and Seed Fund . . Mrs. Florence Gee
234 Birch Street, Roseville, Calif.

Slide Librarian and Speakers' Bureau Roy Joyce
1435 Coronado Ter., Los Angeles 26, Calif.

PUBLIC RELATIONS COMMITTEE

Public Relations Director . Mrs. Ethel Arbuckle
5932 Seville Ave., Huntington Park, Calif.

Northwestern Chairman . . Mrs. David Talbot
6209 Riverside Drive, Vancouver, Wash.

Eastern Chairman F. L. Mathewson
Montchanin, Delaware

Southern Chairman Mrs. C. E. Cooper
716 Chelsea Blvd., Houston, Texas

No. California Chairman Mrs. John H. Smith (Hyacinth)
2479 29th Ave., San Francisco 16, Calif.

Northeastern Chairman Mrs. Frederick Kingsbury
225 Lee Street, Brookline, Mass.

Wynona Jensen -- Begonia Queen

By BETTY STOCKWELL
Compton, California

Wynona Jensen would have to search far to find a more appropriate address. She lives at 9515 East Flower Street in Bellflower, California, in a veritable bower of flowers. A sensitive, scientific begonia grower, she loves all phases of work connected with the Jensen Gardens, a business which developed from a hobby which, she says, "Got out of hand both in size and in finances." Hybridizing, however, interests her most.

Mrs. Jensen is a small, curly-haired woman with alert blue eyes. She is quick of movement and quick of mind. Even as she shows visitors through the greenhouses, her busy hands deftly pluck off a dead leaf here and there. She is possessed of a youthful enthusiasm that belies her almost seventy years.

Scrupulously clean, uncrowded greenhouses are a clue to her character. The constant care she gives her sheltered garden is an outward manifestation of an inner respect she has for all living things. The way in which she has artistically arranged her plants is a reflection of her love of beauty.

Begonias have held Wynona Jensen's attention for over thirty years. The plants which she groomed with such loving care have earned numerous awards. Among her first were several Special Awards in 1947 and Section Awards in 1949, both in Long Beach, California, shows. She was the winner of the Long Beach Sweepstakes Award and the recipient of a Bronze Plaque. In the sixteenth annual convention and begonia show of the American Begonia Society in Glendale, California, in 1948, she was honored for her B. 'Bronze Queen'.

Her activities led her into judging. A few years ago she served as president of



Wynona Jensen



B. 'Lady Clare', a Jensen hybrid.

—photo by Dorothy Powell

COVER PICTURE

Begonia 'Abel Carriere', grown by Wynona Jensen of Bellflower, California.

—Photo by Chuck Grotzinger

the Bellflower Branch of the A.B.S. At present, she is in demand as a well-informed speaker, giving talks several times a week to various garden clubs.

The accomplishment that she is most known for, however, is her development of B. 'Lady Clare.' This lovely hybrid was named after the Jensen's daughter. It was registered in 1949, and placed on the sales market in 1952, where it has proved to be a hardy favorite. Naturally, the Jensen greenhouse has a thrifty specimen of this ornamental beauty. The sight of it must evoke, in Wynona Jensen, a justifiable pride as well as memories of its development.

Begonia 'Lady Clare' is a cross between *B. luxurians* and *B. sharffiana*. The first cross resulted in three hundred plants, but at the judicial moment, Mrs. Jensen culled them down to forty. Meticulously she cared for the forty plants for two years. After careful observation she picked three out of the forty to save. They were

hardy, thriving examples of what she had in mind when she started. The rest were culled. The three hybrids were doing well and she marked one of them as the most promising. Then, there came a drastic, unexpected change of weather. The thermometer dropped to 17°! It appeared that the results of several years' work was to be destroyed, but surprisingly, one of the three survived. Wynona Jensen was delighted when she realized the lone survivor was the one she had marked as her favorite. It was ascertained at that moment, that the hardy, beautiful B. 'Lady Clare' could stand extreme cold.

Its survival did not seem as strange to Mrs. Jensen as it would have to someone else, because begonias were associated in her mind with severe winters. In her mid-western home as a girl there had always been begonias. Even her homesteading Dutch-French grandparents raised them indoors during bitter winter weather. They also bloomed in her mother's



Wynona Jensen considers these begonias the "jewels" of the garden.

—photo by Chuck Grotzinger

home in Orient, Iowa, when she was born Wynona Garlock, in the winter of 1893.

She grew up in the small town where she was born. She loved school and even did extra study of botany and general horticulture. The blooms in her grandmother's garden fascinated her, and her active mind absorbed much about them from observation as well as from reading. A child of broad interests, she learned to speak and read French. When she reached the age of twenty she "forgot" flowers long enough to fall in love with something else. Namely, young Julius Jensen. They were married in Kansas City in 1914, where they made their home for six years. Then, longing for sunshine, they packed heirlooms, belongings, and books and moved to California.

Never satisfied to remain idle, Mrs. Jensen turned her scientific attention to the study of drugs. She studied hard, served an apprenticeship and became a registered pharmacist. She worked at the same job for sixteen years.

Still an incessant reader, she read of begonias but didn't own any as yet. She studied genetics as well as drugs, and her childhood French was revived by reading French textbooks on hybridizing. The time was soon to come for a revival in begonia ownership as well.

An elderly German violin maker who traded in the drug store where she worked knew of the young woman's interest and love of begonias. He came in one day, bearing in his arms a rex begonia 'Bronze Queen' as a gift to the Jensens. It was their begonia beginning in California. She took the plant home and nurtured it. In her own words, "It became so beautiful I just had to have more." So the Jensen Gardens were born.

"Begonias are a way of life," says Mrs. Jensen. "They are more demanding than a flock of chickens. At least a chicken can get itself a drink of water." In spite of the work involved, however, she and Mr. Jensen, who shared her enthusiasm, began adding to their "flock." This led to their first little greenhouse. It was only a 9 ft. x 11 ft. structure but it *had* to be right. Unfortunately the light in

the little greenhouse proved to be inadequate. Mr. Jensen mounted it on rollers and moved it four times to various places on their lot to find the best spot. Such scientific discontent typifies the successful grower.

The fact that the Jensen Gardens carried away so many honors in the business testifies to the importance of attention to every phase of growing. "Proper light, enough room, and cleanliness rank high on my list of things to watch," says Mrs. Jensen.

Temporarily, due to her husband's illness, her hands and heart are now rather full. Lately, her horticultural activities have stressed enjoyment rather than competition, for flowers can be a comfort and a joy as well as a challenge. When asked which phase of the industry interests her most right now, Mrs. Jensen replied, "I'm glad to see the begonia becoming internationally accepted as a fine house plant." She considers it the best. The International Seed Bank pleases her. She likes to think that some of her begonias might be growing here and there around the world.

There is an international air about the Jensen Gardens these days. She now has three lovely specimens of B. 'Iron Cross' from Germany. Musingly, she wonders if the Russians have any top secrets on hybridizing. Already she has tackled the Russian alphabet. Judging from past performance, if Wynona Jensen wants to learn Russian, she will. And if they publish a book on begonias she'll read it.

SAN GABRIEL VALLEY SHOW

The San Gabriel Valley Branch of the A.B.S. will sponsor a Flower Show on Saturday and Sunday, July 29 and 30, at the Los Angeles State and County Arboretum, 301 North Baldwin Avenue, Arcadia, California.

**BE SURE TO SEE
THE BEGONIA SHOW
AUGUST 26-27**

Clayton M. Kelly Seed Fund Flight

No. 1—*B. cathayana*, Hemsley—

China. Growth erect, shrubby, 40-60 cm. high. Stems succulent, round, reddish brown, covered with soft, white hairs. Leaves asymmetric, hanging down, about 20 x 12 cm. asymmetric cordate more or less lobed and dentate, ending in a point, velvety, dark, olive-green, with a light green area which becomes white toward the center, deep purple, velvety veins, covered with soft hairs, mainly at the margins and beneath. The lower side of the leaf is very red with reticulate venation. Petiole 7-12 cm. long, round succulent, light green, densely covered with soft white hairs. Inflorescence axillary, not long, densely covered with soft hairs bending over, orange-vermillion twelve to fifteen flowers, relatively large. *B. cathayana* is a rare and beautiful species with valuable leaves. Aristocrat of the begonia world.

B. cathayana requires greenhouse conditions and is not recommended for room or window-sill culture. Seeds were collected especially for the Seed Fund from plants growing in the Conservatory in Paris, France. \$1.50 per pkt.

No. 2—*B. 'Charm'*—

Bright yellow and green splotched, speckled leaves. Pink flowers at all season. Easy to grow and highly recommended. 50 cents per pkt.

No. 3—*B. 'Thimbleberry'* type—

A group of begonias whose blooms could not decide whether to be single or double when they developed crested flowers. Seeds offered here are from dark-leaved varieties with pink or red flowers, or combinations such as red with gold crest. 50 cents per pkt.

No. 4—*B. 'Maphil'*—

Syn. *B. 'Cleopatra'* (Walker). Gorgeous leaves of chartreuse to gold. Red veining and splashes on new leaves fade to light chocolate as the leaves mature. 50 cents per pkt.

No. 5—*B. 'Bow-Nigra'*—

Dark, bronzy leaf with light green markings. Star type with pink flowers. 25 cents per pkt.

No. 6—*B. malabarica*—

Asiatic species. Low, bushy, pubescent; leaves small, ovate, green, toothed; inflorescence short; flowers bluish-pink in short-stemmed clusters.

The name given here is that of the collector and seeds were sent to the Seed Fund from Brazil. We assume no responsibility for this identification. 25 cents per pkt.

No. 7—*B. 'Boweri'* seedling—

Plants are of the 'Boweri' type, having quite small, all-black leaves. 25 cents per pkt.

No. 8—*B. 'Ricky Minter'*—

Crisped, lobed leaves, lavishly frilled and crested on the edges. Color light green when plant is grown in strong light, to darker green near black when grown in shade. Flowers pink. Handsome plant which has attracted much interest and admiration. 25 cents per pkt.

No. 9—*B. sunderbruchi*—

Old fashioned favorite star type plant. Seven to nine fingered leaves are large, bronze-green, strikingly marked with light green veins and splotches, mottled red and green beneath. Each finger is pointed and scalloped on the edge. Two-petaled pink flowers. 25 cents per pkt.

No. 10—*B. caffra*—

A species from South Africa. 25 cents per pkt.

No. 11—*B. 'Boutinniere'*—

Small growing cane type with pinkish-white flowers. 25 cents per pkt.

No. 12—*B. vellozoana*—

Small amount of seed available. See recent *Begonian* for complete description. \$1.00 per pkt.

No. 13—*B. masoniana*—

Fair amount of seed available. See previous issues for description. \$1.00 per pkt.

GREENHOUSE PLANTS

Sinnibgia regina—

Brazil. Tuberous species related to *S. speciosa*, with pointed, bronzy-green, red backed, velvety leaves beautifully pat-

terned with ivory veins. A profusion of nodding slipper-type violet flowers. 25 cents per pkt.

Aeschynanthus bractatus—

No description available. 25 cents per pkt.

Peperoma maculosa—

Santa Domingo. Ornamental, fleshy species with long-pendant, narrow lanceolate leaves to seven inches long, waxy bluish-green, with silvery green to ivory ribs. Petioles prettily spotted with red-purple; spikes to one foot tall. 25 cents per pkt.

Anigozanthus flavida—

'Kangaroo paw'. Australia. the 'Kangaroo paws' of Western Australia are among the most spectacular and unusual plants that can be grown in the home garden. The flowers have been aptly described as kangaroo paws, as they are shaped like the foot of an animal. Plants are not particularly difficult to grow in a mild climate or greenhouse, but they require moderately heavy, loamy soil and respond well to the presence of organic matter. The species is rather variable in plants grown from seed, and although the principal color is green, the secondary tones may vary from red to yellow. The foliage is grass-like, and roots grow in clumps, iris-like. 25 cents per pkt.

Dyckia altissima—

Bromel. Popular plant for both inside and outside gardens, generally combined with cacti and other succulents. They seem to thrive under adverse conditions. All of the species, being native to sunny areas in Brazil and Argentina as well as other South American countries, have the ability to withstand low temperatures and full light exposure when transferred to cultivation. The flowers are generally yellow or orange with petals fused into a tubular cup. 25 cents per pkt.

FERN SPORES

Pityrogramma triangularis—

Gold-back fern. Rhizome thickish, short-creeping or somewhat ascending. Scales narrow, stiff, brownish, often black-keeled. Fronds erect, numerous, tufted, up to 35 cm. tall. Stipes stiff and wiry, very dark brown, lustrous, glabrous except at the base, about twice

as long as the blade. Blades deltoid-pentagonal, pinnate, two basal pinnae relatively large, pinnate, or pinnately divided, deltoid but markedly asymmetrical about the mid-vein the largest pinnales on the lower side. Other pinnae linear-oblong, pinnately lobed, segments rounded-obtuse, mostly decurrent, coriaceous, covered with white or yellowish, waxy powder below, essentially glabrous above. Habitat: rocky slopes and crevices. 35 cents per pkt.

Adiantum cuneatum—

'Delta Maidenhair'. Greenhouse favorite because of its tolerance, sturdiness, and simple elegance of the dark green fronds with many small firm leaflets having a wedge-shaped base, with veins running into the sinus between lobes. 25 cents per pkt.

Pellea viridis—

New Zealand. Small rock loving fern with creeping rhizomes and pubescent stems. Fronds nearly uniform and staying near the ground, simply pinnate, evenly spaced leaflets, round when young, later oblong, dark green and waxy leathery. 25 cents per pkt.

OTHER GENERA

Tricyrtis hirta—

'Toad Lily'. One of the most fascinating of autumn perennials. The flowers are borne in the axils of the leaves for the length of the stem, sometimes reaching two feet in length, and are white-spotted and curiously marked with purple. In well grown specimens, more than one flower appears in the axils of the leaves, remaining colorful for a considerable period. This is a herbaceous plant that requires a deep, cool soil in a shady situation. It is perfectly hardy, but requires some shelter to protect it from harsh winds, which spoil the appearance of the flowers. If the leaves are removed, a stem of the plant looks like a spray of some curious orchid species and always arouses interest. Something unusual and different. Five seeds for 25 cents.

Melocactus reustu—

Honduras. Identified and described by the botanists, Drs. Britton and Rose, in their monograph. Plants mostly globular,

5-15 cm. in diameter. Ribs 11-19 cm. high, separated by sharp intervals; young areoles brown felted. Spines dark brown at first, gray in age. Radial spines five to eight, spreading or reflexed. Cephalum a small crown of brown stiff bristles and white wool. Flowers red. Central spine solitary, erect 2-3 cm. long subulate.

Quote from collector: "The fruit is like a small, red pepper that appears over night and can be pulled out of the white wool. I have a plant that has seven plants around the crown and these bear flowers and fruit. They eventually fall off as the old plant decays, and form roots of their own. Very interesting plant." Five seeds for 25 cents.

Gordonia—

Rather rare, botanically interesting plant of the family Theaceae. They have half evergreen, or completely evergreen, alternate, stalked leaves without marginal teeth, or remotely toothed. Flowers large, solitary white, the five sepals unequal, the petals sometimes partly united. Stamens many. Remindful of the magnolia and should be grown in greenhouse in cold climates. 25 cents per pkt.

Quamoclit—

'Star-Glory'. Annual or perennial vine of the family Convolvulaceae. Fern-like leaves and red, bird-cage-shaped flowers. Rapid growing. 25 cents per pkt.

Browallia speciosa—

A smooth-branching annual with oval-shaped leaves pointed at the tips. Tubular blue flowers. 25 cents per pkt.

Heuchera sanguinea—

Alumroot. Coral bells. Hardy perennial blooming over a long period. Red flowers. Useful in borders and beds. 25 cents per pkt.

Yucca brevifolia.

Joshua tree, also called yucca. An extraordinary, grotesquely branching desert plant with leaves in dense terminal rosetts. Flowers greenish-white, fragrant. Some requested seed of the Joshua tree, and a friend was kind enough to go on a safari into the desert and collect seed. 25 cents per pkt.

Amaryllis striata var. fulgens—

Syn. *Hippeastrum rutilum*. Popular plant used in hybridizing to produce

miniature or gracillis *Amaryllis* types. 25 cents per pkt.

Amaryllis hybrids—

Mixed. 25 cents per pkt.

MRS. FLORENCE GEE
Seed Fund Administrator
234 Birch Street,
Roseville, California

BINDERS

PRESERVE YOUR BEGONIAS

\$1.00 each

f.o.b. El Monte Community Branch
c/o Mrs. Verne Powell

4836 Cedar El Monte, Calif.



ARAGRO FISH CONCENTRATE

ESPECIALLY GOOD ON

SHADE PLANTS

NO BURNING OR ODOR

Recommended and Sold by

JENSEN'S GARDENS

9515 E. FLOWER AVENUE
BELLFLOWER, CALIF.

We feature African Violets and Begonias

NO MAIL ORDERS

*Palos
Verdes*

Begonia

Farm

4111 - 242nd St., Walteria, Calif.

TUBEROUS BEGONIAS

COMPLETE SELECTION OF BEGONIAS
AND SHADE PLANTS

FUCHSIAS — CAMELLIAS — FERNS

OPEN DAILY — CLOSED MONDAY

Complete Nursery & Garden Supply Shop

1½ Miles E. of Redondo Beach

Hi-Way 101

Begonia and Shade Plant Show

August 26-27, 1961

CALIFORNIA NATIONAL GUARD ARMORY

10808 Culver Blvd. (at Coombs Ave.), Culver City, California
(One block west of Overland Blvd.)

Open 2 p.m. to 10 p.m. Saturday, August 26 — 10 a.m. to 6 p.m., Sunday, August 27.

We are making plans for a larger competitive show with added floor space to encourage all members to bring their plants. Two new divisions have been added — division J for specimen plants exhibited by Branches, and division S for species by any member. A special division for novice exhibitors has also been included. Please read the rules and regulations as adopted by the National Board.

Let all members help to make this year's Begonia and Shade Plant Show the best ever. Only by your participation can this be accomplished.

Meeting old friends and making new ones are a good gardener's delight. We all look forward to our Annual Meeting each year, glad to greet and welcome you.

BERT SLATTER, *Show Chairman*

Point System for Judging Begonias

FIBROUS AND RHIZOMATOUS SPECIMENS

Cultural perfection	50
Foliage	15
Difficulty of cultivation	15
Quantity and quality flowers	15
Correct and suitable labeling	5

100

REX BEGONIA SPECIMEN PLANT

Cultural perfection	40
Foliage	20
Distinctiveness	10
Size of plant	10
Difficulty of cultivation	15
Correct and suitable labeling	5

100

TUBEROUS BEGONIA SPECIMEN PLANT

Size of bloom	10
Form	20
Color	20
Substance	20
Foliage	10
Stem	10
Distinction	10

100

BEGONIA FLOWER ARRANGEMENTS

Color combination	25
Proportion and balance	25
Distinction and originality	20
Relation to receptacle	10

Condition	10
Suitable combination of material	10

100

SEMPERFLORENS—

SINGLE AND DOUBLE FLOWERED

Cultural perfection	25
Flowers	35
Foliage	20
Grooming	15
Correct and suitable label	5

100

NEW BEGONIA CULTIVARS

Distinctiveness	40
Foliage	
Color intensity	10
Texture	10
Form	10
Beauty of plant form	20
Flowers	10

100

CORSAGE OF BEGONIA FLOWERS

Color combination	25
Proportion and balance	25
Suitability of occasion	10
Style and grace	25
Distinction and originality	15

100

TOWARD WINNING SWEEPSTAKES TROPHY

First place	3 points
-------------------	----------

1961 FLOWER SHOW SCHEDULE OF A.B.S. Annual Meeting, California No. 10

DIVISION A—SEMPERFLORENS BEGONIAS

- Class 1. Foliage green, flowers single.
2. Foliage dark, flowers single.
3. Foliage green, flowers double.
4. Foliage dark, flowers double.
5. Species, such as, Indian species, Mexican species, etc.
6. *Begonias* 'Richmondensis,' or 'Catalina,' others similar.

DIVISION B—FIBROUS BEGONIAS, (CANE TYPE)

- Class 7. Tall types (over three feet), as 'Lucerna,' 'Orange Rubra,' etc.
8. Intermediate types, (18 in. to 3 ft., as 'Medora,' *olbia*, and others.
9. Low growing types (under 18 in.)
10. Any other cane type not covered in above classes. Thickened stalk type.

DIVISION C—HAIRY FIBROUS BEGONIAS

- Class 11. Hairy, as *scharffi*, 'Fernando Costae.'
12. Sparsely hairy, as 'Neely Gaddis,' 'Braemar,' 'Dorothy Grant,' etc.
13. Heavy-textured tomentum—covered foliage, as *incana*, *kellermanni*, 'San Miguel,' etc.
14. Distinctive foliage, erect growth, as 'Mrs Fred Scripps,' *luxurians*, etc.
15. Any other varieties not covered in the above classes.

DIVISION D—RHIZOMATOUS BEGONIAS (not rex)

- Class 16. Small leaves, as *boweri*, *imperialis*, *rotundifolia*, etc.
17. Medium leaves, star type, as, 'Glendale,' 'Silver Star,' 'Virbob,' etc.
18. Large star foliage, as 'Ricinifolia,' *heracleifolia*, 'Sunbar,' etc.
19. Medium foliage, no marginal cutting, as 'Erythrophylla' etc.
20. Large foliage, no marginal cutting, as 'Freddie,' *barkeri*, etc.
21. Spiral or crested foliage, as *manicata cristata*, 'Crestabruchi,' etc.
22. Distinctive, unusual or odd foliage, as, *acida*, 'Iron Cross,' etc.
23. Hairy leaved types, as, 'Otto Alfred,' *fusca*, etc.
24. Rhizome upright, as, *carolineafolia*, *kenworthyi*, etc.
25. Any other varieties not covered in the above classes.

DIVISION E—REX CULTORUM BEGONIAS

- Class 26. Large leaved types, as, 'Cardoza Gardens,' 'President,' 'Rajah,' etc.
27. Medium leaved types, as, 'Helen Lewis,' 'American Beauty,' and many of the new rexes that are available.
28. Small leaves, as, 'Dew Drop' and others of approximate size.
29. Large spiral-leaves, as, 'Bronze King,' 'Mt. Baldy,' 'Green Pastures,' etc.
30. Medium spiral-leaves, as 'Bronco,' 'Curly Haze,' 'Mary Ann,' etc.

31. Branching Types, as 'Sweet,' etc.
32. Miniature leaves, as 'terfly,' etc.
33. Miniature spiral-leaved 'Curl,' etc.
34. Any other varieties

DIVISION F—TUBEROUS ROOTED (OTHER THAN TUBER)

- Class 35. Species, as, *sutherlandii*
36. Cultivars, as 'Weltc'
37. All *socotrana* and de
38. Any others not cover

DIVISION G—TUBERHYBRIDA, (

- Class 39. Single forms, flowers
40. 'Multiflora' and 'Mi
pact, many flowered,
41. Camellia forms, fl
double.
42. 'Fimbriata Plena,' la
43. *crispa*; large, single,
44. *cristata*; large, single
on each petal
45. 'Rosebud,' ro
46. 'Picotee,' irregular b
into the dominant sh
47. 'Marmorata,' camelli
blotched and spotted
48. Ruffled camellia anc
from 'Fimbriata Plen
49. 'Marginata,' camellia
precise line of a diffe
50. *pendula*; drooping t
tainers; flowers nume

DIVISION H—WALL POCKETS

- Class 51. Fibrous begonias, Cl
52. Rhizomatous begonia
53. Rex begonias, Classe
54. Tuberous begonias, C

DIVISION I—HANGING BASKETS

- Class 55. Fibrous begonias, Cl
56. Rhizomatous begonia
57. Rex begonias, Classe
58. Tuberous begonias, C

DIVISION J—SPECIAL DIVISION F

Collection of six pl
exhibited by a Brar
Branch show firm
bon awards, \$
awards. Plants must

THE AMERICAN BEGONIA SOCIETY

National Guard Armory, Culver City, California

'Van Ex,' 'Silver Van Ex,' 'Silver Toy,' 'Annie Robinson,' 'Butterfly,' as, 'Cutie,' 'Berry's Brown' not covered in the above classes.

BEGONIAS (TUBERHYBRIDA)

di, martiana, davisii, etc. 'niensis,' 'Richard Robinson,' etc. derivatives. included in the above classes.

ONE SPECIMEN PLANT

suggestive of the wild rose. 'Albiflora Alba'; low, bushy, compact both single and double. flowers camellia-like, single and

large double, carnation-like flowers. petal margins frilled. flowers with crestlike out growth

in appearance. order of a different color bleeding side.

a form with a rose background white. novelty types as distinguished by

form, petals edged with a thin, red center. type suitable for suspended containers, both large and small.

Classes 1-15.

Classes (not rex), Classes 16-25.

Classes 26-34.

Classes 35-50.

Classes 1-15.

Classes (not rex), Classes 16-25.

Classes 26-34.

Classes 35-50.

OR BRANCHES

plants of different varieties, to be shown under the direction of the in. first, second, and third ribbons. \$15.00, \$10.00, and \$5.00 cash be given by Branch members.

DIVISION K—NEW BEGONIA INTRODUCTIONS

Class 59. Open to all members, Amateur or Commercial. Entries per exhibitors unlimited. Each entry judged individually by point score and awarded a certificate of commendation upon scoring a minimum of 85 points. Begonias previously entered can not again be exhibited in this class.

DIVISION L—BEGONIAS GROWN ON TOTEM POLES

Class 60. To be classified according to entries by show chairman, and chief clerk. 'A' and 'B' divisions if necessary.

DIVISION M—NOVICE CLASSES

Any amateur Begonia Society Member who has never won a blue ribbon in an A.B.S. show preceding 1959 may enter plants in this division, as classified in the previous classes, for a period of three consecutive years. These will be staged separately and judged accordingly. Class ribbons and trophies will be awarded in this division.

DIVISION N—COMMERCIAL GROWERS

In this division Commercial Growers may exhibit plants in any of the classes in this schedule. Ribbons will be awarded. Any of these plants may compete for the President's Trophy.

DIVISION O—FERNS

Class 61. Mounted large-leaved epiphytic, as *Platycerium*.

62. Hardy North American species, as *Woodwardia fimbriata*.

63. Hardy tropicals, as *Pteris* and *Polystichum* varieties.

64. Tender and rare tropicals, as *Polypodium* varieties.

65. *Adiantum* (Maidenhair) varieties.

66. Hanging baskets, fine or heavy fronds.

67. Wall baskets, fine or heavy fronds.

DIVISION P—OTHER SHADE PLANTS

Class 68. House plant.

69. Any shade or tropical plant.

DIVISION Q—FLOWER ARRANGEMENTS

Class 70. Begonia flowers and foliage, other than 'Tuberhybrida.'

71. Low container, tuberous begonia flowers.

72. Begonias and other plant material.

73. Rex begonia foliage only.

74. Corsage using tuberous begonias.

75. Corsage of begonia blossoms or foliage other than 'Tuberhybrida.'

DIVISION R—PLANTERS AND TERRARIUMS

Class 76. Plantings of begonias.

77. Plantings with other house plants.

DIVISION S—SPECIES

Open to all. No limit on entries by any member.

A.B.S. Flower Show Rules and Regulations

1. All exhibits are, from the commencement to the close of the exhibition, in the charge of the Show Committee.

2. Competitive entries must be made according to division and classes.

3. All competitive entries must be in place by 9:30 a.m., Saturday, August 26, and judging will commence at 10:00 a.m. All entries not in by 9:30 a.m. will be eligible only for non-competitive exhibition.

4. All entries will receive sealed entry cards at time of entering plants, allowing same to remain sealed until after judging.

5. Chairman of Judges Committee will assume complete charge at start of judging and no person will be allowed to interfere, to offer criticisms, or to distract the decisions of the judges. Only judges and their clerks will be permitted in show room at time of judging.

6. Any chairman or members of committees engaged in the show preparation will be permitted to exhibit and to compete under the same conditions as any other exhibitor, with adherence to all show rules.

7. Each entry may compete for only one class award and only one entry per exhibitor may be made in any class with the exception of division K.

8. All plants and flowers exhibited in competitive classes must have been grown by the exhibitor and have been in his possession for three months prior to the show. This rule does not apply to flower arrangements. Only class award blue ribbon winners may be considered for trophy awards in the novice and amateur divisions.

9. *Novice*: A novice is an amateur who enters A.B.S. competition for the first time and he remains a novice for three consecutive years, after which he must enter in the ama-

teur class. In the event a novice wins a total of five blue ribbons or wins one of the A.B.S. trophy awards prior to the expiration of this three year period he must thereafter enter as an amateur.

10. *Amateur*: An amateur is one who grows plants for self-pleasure and by self-effort and does not hold a commercial license. Any member of the family not falling into this category disqualifies the entire family as amateurs.

11. *Commercial grower*: A commercial grower may enter any class. However his plants will be judged for the President's Challenge Trophy only for the best begonia in the show.

12. The management shall have the right to exclude infected or diseased plants.

13. No plant may be removed from the Show except by official permission.

14. While the management will exercise due caution and care in safeguarding exhibits, it cannot assume responsibility for loss or injury.

15. Judges shall award premiums as in their opinion an entry merits. Whether a group of entries is in competition, or an entry is without competition, it will be at their discretion to award only on merits. The decision of the judges is final.

16. Sweepstakes trophies will be awarded on total number of blue ribbons only in begonia divisions.

17. All trophies must remain on display for the duration of the flower show.

18. Individual entries in the competitive show are limited to A.B.S. members only. Only one exhibitor per family may enter.

19. Challenge trophies are to be returned to the A.B.S. Flower Show Chairman two weeks prior to the 1962 A.B.S. Flower Show.

Special Awards

The following awards are competitive and are open to all exhibitors in the Novice and Amateur divisions.

Sweepstakes trophies will be awarded in both Amateur and Novice divisions. (See Rules and Regulations no. 16).

HERBERT P. DYCKMAN PERPETUAL AWARD—

This award is given by Mrs. Dyckman in honor of her husband, the late Herbert P. Dyckman who was the Founder of the American Begonia Society.

The most outstanding NEW FIBROUS begonia exhibited each year will be honored with this award.

PRESIDENT'S CHALLENGE TROPHY — To be awarded to the Best Begonia in the Show displayed by either amateur or commercial entrant. The large trophy was presented to the A.B.S. by Calvin E. Trowbridge. Only plants which win division trophies may be considered for best plant in show.

PALOS VERDES BEGONIA FARM CHALLENGE TROPHY— Given for the outstanding Tuberous Begonia in the Show.

EFFIE CHAPMAN CUP— For the best Fibrous Begonia in the Show.

GONDA HARTWELL CUP— For the best Rex Begonia in the Show.

JOHN R. WILLIAMS CUP— For the best Rhizomatous Begonia in the Show.

REDONDO BAY AREA PERPETUAL TROPHY— For the best *Semperflorens* Begonia in the Show.

CONNIE LEIGH HENDRIX CUP— For the best amateur Flower Arrangement in the Show.

GORDON BAKER LLOYD CHALLENGE CUP— For the best Seedling in the Show. (less than one year old).

A.B.S. SWEEPSTAKES TROPHY— To the winner of the most points in the begonia divisions of the show.

THE GLENDALE BRANCH AWARD— For the highest rating NEW CULTIVAR shown in Division K.

THE INGLEWOOD BRANCH AWARD— For the most distinctive species in division S.

THE EDUCATIONAL DISPLAY \$25 AWARD— To promote knowledge of begonias. Open to all.

ALFRED D. ROBINSON MEMORIAL MEDAL— To the hybrid begonia for 1955.

JACK TAYLOR PERPETUAL TROPHY— For the best hanging basket begonia.

OPEN HOUSE

NATIONAL BOARD MEETING

The Glendale Branch will be hosts for an open house National Board meeting planned for July 23, 1961, the Sunday before the regular fourth Monday meeting date.

The location is the Glendale Federal Savings Building on the corner of Brand Boulevard and Lexington Drive in Glendale. The meeting room is in the basement at the rear of the building, in the Carillon Room. A large parking lot is available.

The time will be 2:30 p.m. Refreshments and visiting time will follow the meeting.

Before the meeting, there will be two gardens to visit, one at the home of Mrs. Marjorie Duncan Baker, 3090 Menlo Drive, in North Glendale, and the Korts' garden in Los Angeles. These gardens will be open from 12 noon until 2 p.m., allowing you one half hour to gather at the Glendale Federal Savings Building.

There will be a donation plant sale to help defray convention expenses. Members and visitors are welcome.

EDNA L. KORTS, *President*

SHOW IN LONG BEACH

A Plant and Flower Show, sponsored by the Long Beach Parent Chapter of the A.B.S., will be held on Saturday, August 5, at 728 Elm Street, Long Beach, California. The show will be open from 10 a.m. to 10 p.m. and there will be no admission charge.

Tuberous begonias will dominate the show, although all shade plants will be eligible to enter. All entries will be judged, with ribbons and trophies in various classifications.

A plant sale, snack bar, and door prizes will be featured.

Members of other Branches are urged to help make this show successful. Plants for exhibition may be brought in on Friday, the day before the show, after 4 p.m.

CALENDAR

July 6 — Westchester Branch. Jean Kerlin will be guest speaker. Her topic will be "Grooming Begonias for the Show."

July 13 — Inglewood Branch. Richfield Oil Corporation's famous slides on "Wild Flowers" will be shown. This will be followed by a panel discussion of grooming show plants, conducted by Bert Slatter, Terry Omsted, and Marie Zachau.

July 14 — San Gabriel Valley Branch. James Giridlian will present a lecture and colored slides on "Bromeliads." Mr. Giridlian is an expert photographer, so a real treat is promised. Please note the change in meeting date to Friday.

July 26 — Glendale Branch. Mrs. Mabel Corwin, a member of the San Gabriel Valley Branch, will be the speaker. Mrs. Corwin is an expert on the propagating and culture of begonias, and is a very entertaining speaker.

July 28 — Redondo Beach Area Branch. Joe Littlefield, garden consultant, will be guest speaker. A pot-luck supper at 6:30 p.m. precedes the regular meeting. Meeting will be in Joe Taylor's garden at 301 Anita Avenue, Redondo Beach, California.

July 29-30 — Flower Show at the Los Angeles State and County Arboretum, 301 North Baldwin Avenue, Arcadia, California. Sponsored by the San Gabriel Valley Branch.

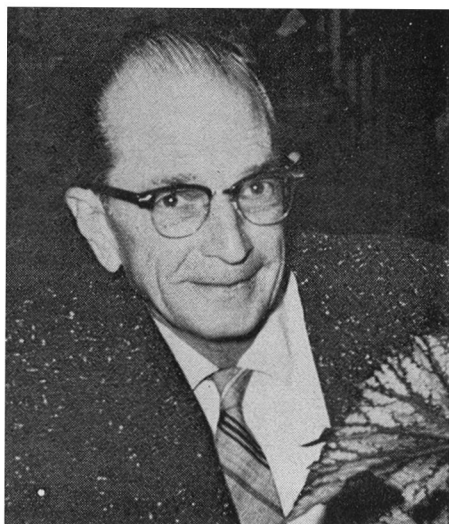
August 5 — Plant and Flower Show by Long Beach Parent Chapter, 728 Elm Street, Long Beach, California. 10 a.m. to 10 p.m.

August 6 — Westchester Branch. Westchester's first garden tour, with eight members showing their gardens. For further information call ORchard 2-5112 or ORchard 7-5907.

COPY DEADLINE

All material for publication in THE BEGONIAN must be received by the Editor not later than the fifth of the month preceding month of publication.

Know Your Candidates



Carl E. Naumann

PRESIDENT-ELECT: Carl E. Naumann.

Carl E. Naumann is President of the San Gabriel Valley Branch of the A.B.S., and is a member of the San Gabriel Valley Orchid Hobbyist and the California Arboretum Foundation.

He was born in Los Angeles and raised in this area. He is a graduate of Franklin High School and is a World War II veteran.

His love for gardening was developed in the fourth grade under the teaching and guidance of the well-known horticulturist, Charlotte M. Hoak. He is interested in anything that grows, but his special interest is in begonias and shade plants.

If elected to this office, his only interest is in serving the A.B.S. to the best of his ability.

PRESIDENT-ELECT: Mrs. Sylvia B. Leatherman.

Mrs. Sylvia Leatherman served the A.B.S. as Director of Research and Test Gardens in 1960, and also served as President of the El Monte Community Branch of the A.B.S. She was Treasurer of the California National Fuchsia So-



Sylvia B. Leatherman

ciety for two years as well as President of the Monterey Park Community Branch of that organization. She was President of the Los Angeles Fern Society for two years. Other offices include P.T.A. President for two years, Secretary of the Coordinating Council for two years.

She is a writer, lecturer, and horticulturist, and is considered an authority on begonias, ferns, and related plants.

VICE-PRESIDENT: Mrs. Ernest C. Drew.

Mrs. Drew is a member of the William Penn Branch of the A.B.S. and an earnest, intelligent, dedicated begonia person. She has been in the Society for many years. She has stood by the American Begonia Society and will continue to do so.

Mrs. Drew says, "If nominated, my campaign slogan will be: Raise the dues of the A.B.S. and increase the size and quality of *The Begonian* rather than decrease it."

VICE-PRESIDENT: Mrs. Frederick Kingsbury.

Mrs. Kingsbury served as Northeastern Public Relations Chairman for the A.B.S.

for three years. During this time she has established new Branches and helped with other projects such as the "Annual Begonia Party," which is held jointly by several Eastern Branches. This party is the equivalent of our National Convention and Show, helping them to know each other, and means a great deal to them.

Mrs. Kingsbury is a member of the Bessie Raymond Buxton Branch and is an earnest Begonia Society worker.

SECRETARY: Mrs. Margaret B. Taylor.

Mrs. Margaret Taylor has served as Secretary of the A.B.S. for the past year, and is a member of the Orange County Branch.

She has been active for several years in both the American Begonia Society and the California National Fuchsia Society, and was Editor of *The Fuchsia Fan* for two years.

She is a member of the P.E.O. Sisterhood and has held offices in that organization. She has lived in Anaheim, California, for fourteen years.

TREASURER: Earle E. Budd.

Earle E. Budd is a charter member of the Westchester Branch of the A.B.S., serving that Branch as National Director for the year 1960.

He was educated in Salt Lake City schools, and his post-graduate studies were in bookkeeping and accounting.

He is employed by the Douglas Aircraft Company of Santa Monica, California, as Assistant Supervisor of Material Control.

He has lived in Westchester for seventeen years, and has been married for thirty-two years. Both he and his wife, Ruby, are avid begonia fans.

**YOUR BALLOT IS
ON PAGE 149**

**COME TO THE
CONVENTION
AUGUST 26-27**

CANDIDATES NOMINATED

The nominating committee, appointed by the president of the American Begonia Society, submitted the following slate of candidates for officers to be elected prior to the 1961 convention:

PRESIDENT-ELECT: Carl E. Naumann, Glendora, California; member of San Gabriel Valley Branch.

VICE-PRESIDENT: Mrs. Ernest C. Drew, Narberth, Pennsylvania; member of William Penn Branch.

Mrs. Frederick Kingsbury, Brookline, Massachusetts, member of Bessie Raymond Buxton Branch.

SECRETARY: Mrs. Margaret B. Taylor, Anaheim, California, member of Orange County Branch.

TREASURER: Earle E. Budd, Los Angeles, California, member of Westchester Branch.

Members of the nominating committee were Carl H. Himmelman, chairman, Mrs. Terry Olmstead, and Mrs. Pearl Parker.

In addition to the candidates nominated by the committee, Mrs. Sylvia B. Leatherman of South El Monte, California, a member of the El Monte Community Branch, was nominated by five petitions signed by members requesting that her name be placed on the ballot as President-Elect.

SHOW REMINDER

August 26 and 27 are the dates to remember for the Annual Begonia and Shade Plant Show.

This show will be the high point of the year for begonia growers and admirers alike. There will be competitive and educational exhibits, display booths, plant sale, door prizes, and other attractions. Many new features will be introduced to the show this year, so come and see the results of your committee's efforts.

Also, be sure to attend the banquet on Saturday evening.

See you at the Culver City Armory on August 26 and 27!

GEORGE SCHLANERT
Convention Chairman

MINUTES OF NATIONAL BOARD MEETING

The regular monthly meeting of the National Board of the American Begonia Society was called to order at 7:35 p.m. May 22, 1961, by President Edna L. Korts.

Seventeen officers, chairmen, and representatives responded to roll-call; three came in later.

Past President Hall read a letter from the William Penn Branch of the A.B.S. stating that they wished to go on record as being in favor of raising membership dues to \$5.00 per year.

Vice-President Joyce reported having visited three Branches, enthusiasm being shown by all of them.

Treasurer Leona Cooper gave her report. Report filed for audit.

Membership Secretary Dorotha Waddington reported 140 new and renewing members with total receipts of \$356.60 and expenses of \$37.50.

Treasurer Cooper read a letter from Seed Fund Chairman Mrs. Gee, who recently moved up north, stating that she would remit a check for the Seed Fund as soon as she gets the account transferred to her new location. Mrs. Gee asked to be remembered to all members.

President-Elect Schlanert report \$36.20 remitted to the Treasurer for advertising.

Public Relations Director Mrs. Arbuckle reported that she had a letter from Mrs. Frederick Kingsbury, Northeastern Public Relations Chairman, stating that the Bessie Raymond Buxton Branch is moving along enthusiastically and they have voted in favor of an increase in membership dues.

Flower Show Chairman Bert Slatter reported that arrangements for the Annual Show are coming along well and that, since we now have both amateur and novice divisions, more trophies will be needed, and asked that Branch representatives carry back to their Branches the hope that each Branch will donate a trophy, and leave it to the Flower Show Committee where they should be placed. Trophies will cost about \$9.50 each.

Librarian Mrs. Sault reported \$33.34 remitted to the Treasurer.

Awards Committee Chairman Mrs. Hazel Snodgrass reported that she is writing to all Branches asking for nominations for the Eva Kenworthy Gray award, and read a portion of the Flower Show Rules relative to "Certificates of Award" to be given out at the Annual Show.

Branches reporting: Glendale, Ventura, Westchester, Whittier, Hollywood, Inglewood, Long Beach Parent, Redondo Beach, San Gabriel, and San Miguel.

President-Elect Schlanert, as Chairman of the Convention Committee, stated that he hoped we could have an even better flower show than usual. He stated that, since the rent of the large auditorium and dinner

cost would be rather high, the committee thought perhaps we should dispense with the usual banquet. He suggested as an alternative that we might use a smaller room that would seat about 165 and the dinner would be about \$3.00 each. If a banquet is arranged it is planned not to have a speaker, but to have just the show awards and installation of new officers. After some discussion it was decided that perhaps the larger room would be the best and the Board suggested the committee investigate further. It was also suggested that the Board and Branches hold donation plant sales to help defray the rent of the larger room. Mr. Schlanert also stated that we need leaflets for the show and Mr. Slatter reported he had secured a price of \$7.00 per thousand. Motion made and carried that we have 5,000 of the leaflets printed.

As Chairman of the Nominating Committee, Mr. Himmelman reported the following names for the ballot:

President-Elect; Carl Naumann, San Gabriel Branch.

Vice President (Eastern); Mrs. Drew, William Penn Branch.

Treasurer; Earl Budd, Westchester Branch. Secretary; Mrs. Margaret Taylor, Orange County Branch.

Mr. Himmelman stated that the name of Mrs. Sylvia Leatherman for President-Elect had been submitted by letter from the El Monte Branch but that the Committee had not placed the name on the ballot. President Korts read a letter she had written to Mrs. Leatherman, former Research Chairman, under date of November 3, 1960, and stated that no reply had ever been received. She then read to the Board the letter from the El Monte Branch and stated that, since the Committee had not placed Mrs. Leatherman's name on the ballot, it would be necessary to have a letter submitting the name signed by fourteen members of the Society. This in accordance with Section 2, Article 7 of the A.B.S. By-Laws.

In compliance with Mr. Slatter's request for trophy donations he announced that he had received offers from Mr. and Mrs. Joe Taylor, Mr. and Mrs. Naumann, Mrs. Lucy Sault and Mrs. Terry Olmstead. Many thanks to these generous members.

Vice President Joyce called attention to the California National Fuchsia Society show June 17 and 18 and stated that he hoped A.B.S. members would enter plants in the show.

Mr. Joe Taylor reported that a South Coast Botanic Garden has been formed and is being planted. He suggested that the American Begonia Society consider putting in a begonia garden.

There being no further business the meeting was adjourned at 9:55 p.m.

IRMA JANE BROWN
Secretary Pro. Tem.

**BALLOT FOR OFFICERS OF
THE AMERICAN BEGONIA SOCIETY**

FOR PRESIDENT-ELECT

Carl E. Naumann ☐

Mrs. Sylvia B. Leathermann ☐

FOR VICE-PRESIDENT

Mrs. Ernest C. Drew ☐

Mrs. Frederick Kingsbury ☐

FOR SECRETARY

Mrs. Margaret B. Taylor ☐

FOR TREASURER

Earle E. Budd ☐

VOTING INSTRUCTIONS

for members

This is your ballot. Make a cross in the space provided opposite the names of the candidates you wish to elect. Vote for one candidate for each office.

Mail in sealed envelope to:

Irma J. Brown, Secretary pro tem,
3628 Revere Avenue,
Los Angeles 39, Calif.

"Only ballots received (by the Secretary) seven days prior to the annual meeting (August 26, 1961) shall be counted." Ballots received after August 19, 1961, will not be counted.

Branch Directory

VISITORS ALWAYS WELCOME AT THESE MEETINGS

BRITISH BRANCH

F. J. Bedson, Secy., Kent, England

BUXTON, BESSIE RAYMOND BRANCH

3rd Saturday, Homes of Members
Mrs. Percy I. Merry, Secy.
109 Brookside Road, Needham, Mass.

DALLAS COUNTY, TEXAS BRANCH

3rd Thursday, 7:00 p.m., Members' Residences
Mrs. M. F. Scribner Corr. Secy.
1422 Marfa, Dallas 16, Texas

EAST BAY BRANCH

2nd Thursday, 7:45 p.m., Willard School
Telegraph at Ward, Berkeley, California
Miss Dorothy F. Osburn, Secy.
5015 Cochrane Ave., Oakland 18, Calif.

EL MONTE COMMUNITY BRANCH

3rd Friday, Members' Homes
Miss Lenore Schroeder, Secy.
1828 So. 7th St., Alhambra, Calif.

FOOTHILL BRANCH

3rd Thursday, 8:00 p.m.
La Verne Community Bldg.
2039 Third St., La Verne
Mrs. Arma J. Shull, Secy.
313 W. 2nd St., San Dimas, Calif.

FORT, ELSA BRANCH

1st Saturday, 1:30 p.m.
Miss Lola Price, Secy.
628 Beech Ave., Laurel Springs, N.J.

GLENDALE BRANCH

4th Wednesday, 8:00 p.m.
Tuesday Afternoon Club, 400 N. Central
Mrs. Isabel Compton, Secy.
2339 Mayberry St., Los Angeles 26, Calif.

GRAY, EVA KENWORTHY BRANCH

3rd Monday, 7:30 p.m.
Community House, La Jolla
Mrs. Charles Calloway
1311 Torrey Pines Rd., La Jolla, Calif.

GRAY'S HARBOR BRANCH

2nd Monday, 8:00 p.m.
Hoquiam Public Library or
Messingale and Roseneau Music Store
Aberdeen, Washington
Mrs. Jessie B. Hoyt, Secy.
1013 Harding Road, Aberdeen, Wash.

GRUENBAUM, MARGARET BRANCH

4th Tuesday 10:30 a.m. Homes of Members
Mrs. Adolph Belser Cor. Secy.
Welsh and Verree Rd., Philadelphia, Pa.

HOLLYWOOD BRANCH

3rd Wednesday, 7:30 p.m.
Plummer Park, 7377 Santa Monica Blvd.
Mrs. Georgina Barton, Secy.
2821 Herkimer St., Los Angeles 39, Calif.

HOUSTON, TEXAS BRANCH

2nd Friday, 10:00 a.m.
Garden Center, 1500 Herman Drive
Mrs. E. H. Claggett, Secy.
4415 Austin St., Houston, Texas

HUMBOLDT COUNTY BRANCH

2nd Monday, 8:00 p.m.
Los Amigos Club, Lofeta, Calif.
Miss Margaret Smith, Secy.
P.O. Box 635, Ferndale, Calif.

INGLEWOOD BRANCH

2nd Thursday, 7:45 p.m., Inglewood Women's Club
325 North Hillcrest, Inglewood, Calif.
Mrs. Bee Olson, Secy.
13715 Cordary St., Hawthorne, Calif.

KNICKERBOCKER BRANCH

2nd Tuesday, 8:00 p.m.
Library, Horticultural Society of N.Y.
157 West 58th St., New York.
Mrs. Gertrude Ferris, Secy.
415 9th Ave., New York 1, N.Y.

LONE STAR BRANCH

3rd Monday, Members' Homes, 10 a.m.
Mrs. M. F. Scribner, Corr. Secy.
1422 Marfa, Dallas 16, Texas

LONG BEACH PARENT CHAPTER

1st Tuesday, 7:30 p.m.,
Machinists Hall
728 Elm St., Long Beach, Calif.
Mrs. Bessie Anthony, Secy.
153 Ellis St., Long Beach, Calif.

LOUISIANA CAPITAL BRANCH

1st Friday, Homes of Members
Mrs. Thomas D. Day, Secy.
4065 Hollywood St., Baton Rouge, La.

MIAMI, FLORIDA BRANCH

4th Tuesday, 8:00 p.m.
Simpson Memorial Garden Center
Mrs. Ray Rosengren, Secy.
5530 N.W. 21 Ave., Miami, Fla.

MISSOURI BRANCH

3rd Tuesday, 1 p.m.
World War Memorial Bldg., Linwood and Paseo
Kansas City, Mo.
Mrs. R. H. Hyatt, Secy.
6812 Hunter St., Raytown 33, Mo.

ORANGE COUNTY BRANCH

2nd Thursday, 7:30 p.m.
Garden Grove Grange Hall, Century and Taft Sts.
Garden Grove, Calif.
Mrs. Mel Westerdahl, Secy.
16422 Heim Ave., Orange, Calif.

PASADENA BRANCH

Meetings on Call, Homes of Members
Col. C. M. Gale, Secy.
40 N. San Rafael, Pasadena 2, Calif.

PHILOBEGONIA BRANCH

2nd Friday, Members' Homes
Mrs. J. Perry Long, Secy.
6532 E. Cedar Ave., Merchantville, N.J.

REDONDO BEACH AREA BRANCH

4th Friday each Month
2308 Rockefeller, Redondo Beach, Calif.
Opal Murray Ahern, Secy.
1304 Poinsettia, Manhattan Beach, Calif.

RHODE ISLAND BRANCH

1st Saturday, Homes of Members
Miss Ruth Harrington, Secy.
372 Lloyd Ave., Providence, R.I.

RIVERSIDE BRANCH

2nd Wednesday, 7:30 p.m., Shamel Park
3650 Arlington, Riverside, Calif.
Mrs. Ethel Prior, Secy.
4345 5th St., Riverside, Calif.

ROBINSON, ALFRED D. BRANCH

3rd Friday, 10:30 a.m., Homes of Members
Constance D. Bower, Cor. Secy.
2413 — K St., San Diego 2, Calif.

SACRAMENTO BRANCH

3rd Tuesday, 8:00 p.m., Garden Center
3330 McKinley Blvd., Sacramento, Calif.
Edward Reuter, Secy.
933 Sonoma Way, Sacramento 19, Calif.

SAN DIEGO BRANCH

4th Monday, Barbour Hall
2717 University Ave., San Diego
Mrs. E. R. Bohe, Secy.
3141 N. Mountain View Dr., San Diego 5, Calif.

SAN FRANCISCO BRANCH

1st Wednesday, 8:00 p.m.
Garden Center, Golden Gate Park
9th Ave. & Lincoln Way
Mrs. Doris Howie, Secy.
1407-42nd Ave., San Francisco 22, Calif.

SAN GABRIEL VALLEY BRANCH

2nd Thursday, 8:00 p.m.,
Los Angeles State & County Arboretum
501 N. Baldwin Ave., Arcadia, Calif.
Ruth Eppley, Secy.
4858 Willard St., Rosemead, Calif.

SAN MIGUEL BRANCH

1st Wednesday, Youth Center, Lemon Grove, Calif.
Mrs. Ruth Brook, Secy.
7151 Central Ave., Lemon Grove, Calif.

SANTA BARBARA BRANCH

2nd Thursday, 7:30 p.m.
Girl Scout Clubhouse, 1838 San Andres St.
Mrs. Hilda Gundel, Secy.
1414 Olive St., Santa Barbara, Calif.

SEATTLE BRANCH

3rd Tuesday, 7:45 p.m.
Meeting locations will vary; call the secretary at
SUUnset 2-2234
Miss Bernice Moore, Secy.
2842 West 59th St., Seattle 7, Wash.

SHEPHERD, THEODOSIA BURR BRANCH

1st Tuesday, 7:30 p.m.
Alice Bartlett, C.H., 902 E. Main, Ventura, Calif.
Mrs. D. E. Claypool, Secy.
104 Forbes Lane, Ventura, Calif.

SMOKY VALLEY BRANCH

3rd Thursday of each Month
Mrs. Robert Nease, Secy.
410 South Phillips, Salina, Kansas

SOUTHERN ALAMEDA COUNTY BRANCH

3rd Thursday, 8:00 p.m.
Strowbridge School Multi-Purpose Rm.
21400 Bedford Dr., Hayward, Calif.
Mrs. Chester Bartlow, Cor. Secy.
37075 Arden St., Newark, Calif.

TALL CORN STATE BRANCH

Mrs. Edna Monson, Secy.
South Taylor, Mason City, Iowa

TARRANT COUNTY BRANCH

2nd Monday, 10:00 a.m.
Scott Hall, Ft. Worth, Texas
Mrs. James O. Burdick, Sr., Secy.
3211 Azle Ave., Fort Worth 6, Texas

TEXAS STATE BRANCH

1st Tuesday Night in Members' Homes
E. Weaver,
1325 Thomas Blvd., Port Arthur, Texas

WESTCHESTER BRANCH

1st Thursday, 7:30 p.m. Westchester Women's
Club,
9020 Alverstone St.,
Los Angeles, Calif.
Mrs. Ruth Burr, Secy.
8335 Fordham Rd., Los Angeles 45, Calif.

WEST VALLEY BRANCH

2nd Tuesday, 7:30 p.m., Orcutt Playground
Clubhouse
21816 Lanark St., Canoga Park, Calif.
Joseph Janatka, Secy.
18641 Casandra, Tarzana, Calif.

WESTERN PENNSYLVANIA BRANCH

2nd Wednesday, 11:00 a.m., Homes of Members
Mrs. A. S. Lash, Secy.
1228 Oklahoma Drive, Pittsburgh 16, Pa.

WHITTIER BRANCH

1st Thursday, 7:30 p.m.
Palm Park Community Center, 1643 Floral Drive
Anne L. Rose, Secy.
1255 Ramona Dr., Whittier, Calif.

WILLIAM PENN BRANCH

3rd Tuesday, 2:00 p.m., Homes of Members
Mrs. H. Rowland Timms, Secy.
Willow Lane, Wallingford, Pa.

SPOONIT**FLOWER FOOD**

Send Post Card for Information and Sample

PLANTSMITH

Box 818

Palo Alto 2, Calif.

NEW & OLD BEGONIA FAVORITES

Healthy young plants for immediate delivery.

Send for new price list.

RUDOLF ZIESENHENNE

1130 N. Milpas St., Santa Barbara, Calif.

BEGONIAS, GERANIUMS, EXOTICS

NEW catalogue with color, 25c

LOGEE'S GREENHOUSES

(Est. 1892)

Danielson, Connecticut

*Begonias, Ferns, Fuchsias, Cacti,
Succulents, Ivies, Geraniums, Herbs*

**UNUSUAL HOUSE AND
CONSERVATORY PLANTS**

1961-62 Illustrated catalog 25¢. List free.

MERRY GARDENS CAMDEN, MAINE

POSTMASTER:
Return Postage
Guaranteed
1135 N. Kenter Ave.
Los Angeles 49, Calif.

Begonias Slanted Toward The Beginner

By Dorothy S. Behrends
Published by Wildcrafters

A complete handbook on propagation, culture, pronunciation, and new begonia descriptions. Well illustrated.

\$2.00 from the author

(California residents add 8 cents sales tax)

442 ORPHEUS AVE., ENCINITAS, CALIF.

Successful BEGONIA Culture

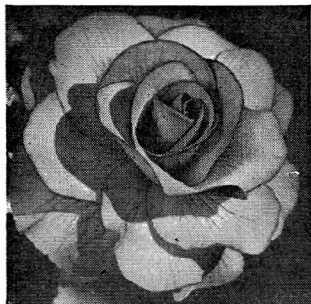
By Frederick J. Bedson

A well illustrated book, now in its second edition describes many begonias introduced up until 1954.

Ask for it at your favorite book store.
or send \$2.50 to the publishers.

TRANSALANTIC ARTS, INC.
HOLLYWOOD BY THE SEA, FLORIDA

New Originations in Rose Form and Ruffled



TUBEROUS BEGONIAS

Exact quality in color and form, from the prize-winning Pacific Strain originated by Frank Reinelt. The very finest obtainable!

Choice Seedlings now being shipped

Vetterle & Reinelt

Dept. B Capitola, California

1961 COLOR CATALOG NOW AVAILABLE