

The BEGONIAN

Devoted to the Sheltered Gardens



BEGONIA PLANTING



Glenn W. Motschman
Photo



JULY
1954



TWENTY-FIVE
CENTS



VOL. XXI
No. 7

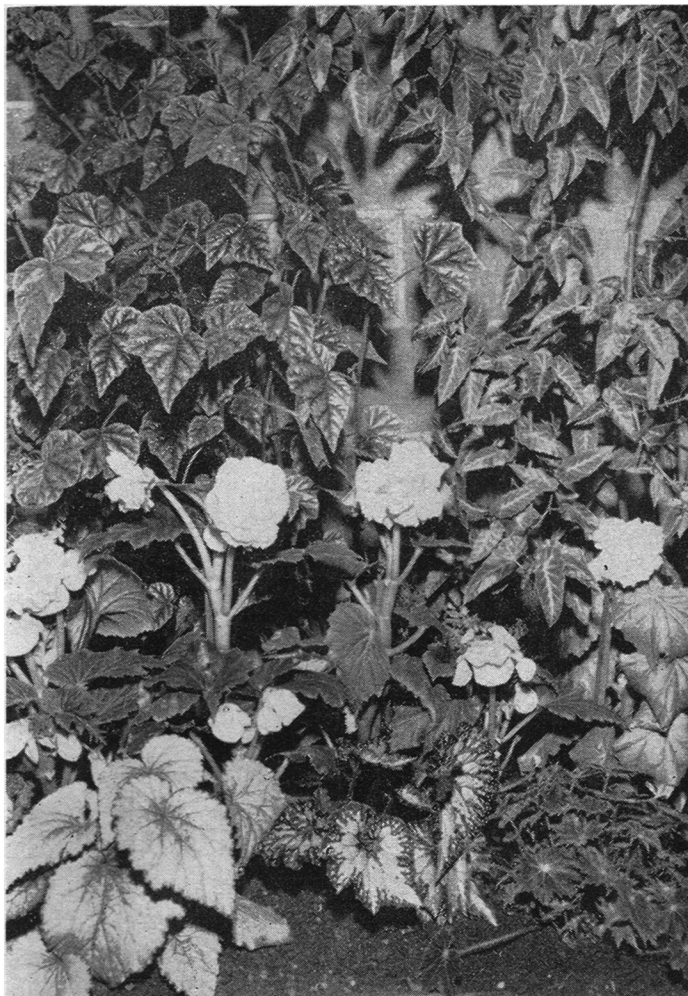


Table of Contents

Feature Articles—

BEGONIA LIEBSTAR	151
BEGONIA TEMPLINI	149
PERSONALITY OF THE BEGONIA WORLD—MRS. CONGDON	164
PHILIPPINE SPECIES	152
SEND A CARD — FOR GOOD CHEER	152
SLANTED TOWARDS THE BEGINNER	153
THE ROMANCE OF DESIGN	149

American Begonia Society—

A.B.S. NEWSSETTE	146	1954 Flower Show Schedule	154-156
A. D. ROBINSON MEDALS PRESENTED	163	1954 A.B.S. Flower Show	
ARMCHAIR GARDENING		Rules and Regulations	156-157
Seed Fund, C. M. Kelly	162	Special Awards	157
Slide Library	164	GARDENS OF THE MONTH	150
Round Robin Notes	163	SLATE OF 1954 NOMINEES	160-161
BRANCH MEETING DATES & PLACES	165-166	THE BEGONIA BRANCHES	158-159
CONVENTION NEWS	150		

A. B. S. NEWSSETTE

May 24th Board Meeting:

The purchase of additional A. B. S. Pins was voted, to be ordered by Business Manager Edna Korts.

Membership Secretary Dorothy Behrends reported 51 new members and 78 renewing members.

Marie Zachau was appointed to the Awards Committee of the A. B. S., filling the vacancy left by the resignation of Eseline Reynolds.

Calvin E. Trowbridge was appointed as Flower Show Chairman, to serve the unexpired term left by the resignation of Eseline Reynolds, due to ill health.

Floor plans for the exhibits for the Convention Flower Show have been printed, and are being sent to the Branch Flower Show Chairmen.

Mrs. Dorris Motschman was appointed as National Publicity Chairman, to fill the vacancy created by the resignation of Bert Slatter.

Glasshouse for Flower Show

The Southern California Greenhouse Manufacturers have very generously granted the A.B.S. one of their 9-foot, 4-inch by 12-foot

Budget-Ray Models, to be given away at the Convention Flower Show in September.

YOUR GREENHOUSE CONSULTANTS

We invite our good friends in The Begonia Society to drop in and talk greenhouses at any time. And don't forget that we have a complete line of supplies, including GE Soil Cable—ideal for seed flats.

See our permanent display



SOUTHERN CALIFORNIA GREENHOUSE MANUFACTURERS

3266 North Rosemead Blvd.

Rosemead, Calif

Cumberland 3-3388

Copyright 1954 by the American Begonia Society, Inc.
Affiliated with the American Horticultural Society
and The American Horticultural Council
General Offices: Box 2544, Los Angeles 54, California

AIMS and PURPOSES

This Society shall be conducted on a non-profit basis, and its purpose shall be to stimulate interest in begonias and shade-loving plants; to encourage the introduction and development of new types of begonias and related plants; to gather and publish information in regard to the kinds, propagation and culture of begonias and other shade-loving plants; and to issue a bulletin which shall be mailed to all members in good standing.

OFFICERS

President Glenn W. Motschman
9601 Haas Ave., Los Angeles 47, Calif.

Pres.-Elect, Ways & Means Chair. Jack E. Koebig
2717 Monterey St., Torrance, California

Past President, Bus. Manager Mrs. Edna L. Korts
3628 Revere Ave., Los Angeles 39, Calif.

Treasurer Charles Richardson
5444 Hartwick St., Los Angeles 41, Calif.

Secretary Mrs. Daisy Walker
4412 Gaviota Ave., Long Beach 7, Calif.

Membership Secretary .. Mrs. Dorothy S. Behrends
Box 2544, Los Angeles 54, Calif.

Vice-President 1 Yr. R. H. Terrell

Vice-President 2 Yr. Mrs. Ruthanne Williams
2160 Stacia Way, Sacramento, Calif.

Vice-President 3 Yr. Mrs. Louise Schwerdtfeger

NOMENCLATURE Director ... H. M. Butterfield
121 Giannini Hall, U. C. Berkeley, Calif.

Nomenclature Committee .. Mrs. Bessie R. Buxton
Mrs. Emma M. Carleton, Mrs. Alice M. Clark,
Dr. V. T. Stoutmeyer, Frederick, J. Bedson FRHS,
Herbert P. Dyckman, R. S. French.

Parliamentarian Roy Joyce
Director of Publicity Bert Slatter
4600 Sixth Ave., Los Angeles 43, Calif.

Slide Library, Speakers Bureau, Mrs. Velda Scalley
1415 W. 104th St., Los Angeles 47, Calif.
Slide Library Committee
Mrs. Daisy Walker, Fred Schultz

Flower Show Chairman Calvin E. Trowbridge
9600 S. Van Ness Ave., Los Angeles 47, Calif.

Flower Show Committee
Stanley Spaulding, Louis Scalley, Mrs. Jean Kerlin,
Mrs. Dorris Motschman.

Historian Mrs. Gonda Hartwell
1719 Alamitos Ave., Monrovia, Calif.

A. B. S. LIBRARY

Librarian Mrs. Arline Stoddard
768 Avenue B, Redondo Beach, Calif.

PUBLIC RELATIONS DIRECTOR

Frank S. Moore
425 N. Ave., 56, Los Angeles 42, Calif.

Public Relations Committee
Mrs. Louise Schwerdtfeger Assistant Director
1450 Cantera Ave., Hope Ranch
Santa Barbara, Calif.

Mrs. David Talbot Northwestern Chairman
6209 Riverside Dr., Vancouver, Wash.

Mrs. Elsa Fort Eastern Chairman
6123 Cedar Ave., Merchantville, N. J.

Mrs. Marie Reed Round Robin Chairman
325 Breed Ave., San Leandro, Calif.

Mr. E. Weaver Southern Chairman
1325 Thomas Blvd., Port Arthur, Texas

The Clayton M. Kelly Research Dept.

Research Director Fred Schultz
11007 Chanera St., Inglewood, Calif.

Research Committee Miss Charlotte Hoak

SEED FUND

Mr. and Mrs. Jack MacLanahan, Chairmen
3734 Overland Ave., Los Angeles 34, Calif.

Hybridizing Chairman Stuart C. Smith

BEGONIAN STAFF

Editor Mrs. Margaret Fenn
1201 Pier Ave., Redondo Beach, Calif.

Sub-Editor, Nomenclature Mrs. Jean Kerlin
3207 Perlita, Los Angeles 39, Calif.

Sub-Editor, Gen. Research .. Mrs. D. S. Behrends
1633 Golden Gate Ave., Los Angeles 26, Calif.

Sub-Editor, A. B. S. News .. Mrs. Mae Koebig
2717 Monterey St., Torrance, California

Sub-Editor, Branch News .. Mrs. Dorris Motschman
9601 Haas Ave., Los Angeles 47, Calif.

Advertising Manager Mrs. Dorothy Whitaker
9701 Haas Ave., Los Angeles 47, Calif.

**For DUES, ADDRESS CHANGES, OR
MAGAZINES — write to Membership
Secretary, Box 2544, Los Angeles 54,
California. Branch Members pay dues
to Branch.**

The next Board meeting of the American Begonia Society will be held in the Los Angeles City Hall, Room 1305, 7:30 p.m., July 26, 1954. Use Main St. elevator. Park lower garage, south entrance on Main Street.

JULY, 1954

* Annual Subscription—Two Dollars Fifty Cents.
* Entered as second-class matter at the Post Office of Los Angeles, California, under the act of March 3rd, 1879.

* Business Office—1633 Golden Gate Ave., Los Angeles 26, Calif.



—Photo Courtesy Mary L. Gillingwaters

BEGONIA TEMPLINI
Plant of Mary L. Gillingwaters

The BEGONIAN

JULY . . .

*It is the part of a wise man . . . to take
pleasure with the beauty of growing plants.*

—BENEDICT SPINOZA

BEGONIA TEMPLINI

By Mary L. Gillingwaters
Upland, California

Of the many spotted-leaved begonias, Begonia Templini is one of the most beautiful. It is a mutant of *B. phyllomaniaca* (sometimes called 'Jessie') whose stems and leaves produce from one to colonies of adventitious leaflets.

B. Templini is easy to grow, attaining a height of five feet or more, if given favorable environment. The stems are erect, woody and very strong. It does not branch freely. The leaves are ovate, pointed, with margins that are toothed, wavy and tinged with red. They are a glossy green, almost covered with cream-colored splotches, which at times, when given sufficient light, have an infusion of rose, making them most beautiful.

During winter and spring, the plant produces an abundance of lovely pink flowers, borne in branching, axillary clusters. These, contrasted with the cream-spotted leaves, make the plant of Begonia Templini a thing of beauty for many weeks.

I cannot understand why this begonia is not more widely grown, for it is quite easily propagated. I have found that the easiest way to propagate it is to take a razor blade, and from the inward side of a branch, cut off a node with a small leaflet attached. Place this cutting in a glass jar or large fish bowl on moist Sponge-rok. Keep the container closely covered until you see the small plant growing from the node, then transplant it into a small pot of soil mixture. In no time at all you will have a lovely plant.

I am sure that the hobbyist who puts so much love and work on growing Begonias for their own and their friends' pleasure, and who like to give plants to neighbors, friends or a surprise caller, would find that one of these beauties would be a cherished gift.

Begonia Templini is fibrous rooted and likes a soil containing plenty of leaf mold, with good drainage. Keep it in a good light, a moist soil, and give a light feeding every two weeks, and you will enjoy the possession of one of the true aristocrats of the Begonia family.

If you are one of those people who are in the habit of picking up your choice plants and driving for miles through the heat and wind, so that the plants may be entered in a show, you will find that your lovely 'Templini' will go through it all in good condition. And more than likely — will bring home a trophy.

NOTE: This is the 2nd prize-winning article of the Contest, in Class III.

THE ROMANCE OF DESIGN

The A. B. S. Chairman of the Judges Class, Mrs. Edna Korts, has arranged an extra dividend meeting to complement the Judges Course of 1953.

On July 16, 1954, at Plummer Park at 8:00 P.M., Carmen Denton Edgar will lecture on "The Romance of Design". As a professional flower show stylist, Carmen Edgar designed the magnificent Christmas windows for Barker Bros., is a decorator of Holiday Homes and the Millard Sheets estate in Padua Hills, in 1953.

This is a rare opportunity for Begonia Judges, as well as all Branch Flower Show Chairmen, to gain excellent pointers for Convention Booths.

All individuals taking the Judges Course will be admitted without charge. Everyone is invited to attend; donation will be one dollar.



—Percy Zug Photo

GARDENS OF THE MONTH

The response of A. B. S. members and their friends to the invitations of other members to visit their OPEN GARDENS during June was tremendous. The interest of gardeners in viewing other gardens than their own, for ideas as well as seeing beautiful plants, has been shown by the numerous requests received, that these OPEN GARDEN listings be continued.

Our thanks to the following members for opening their gardens on the dates listed. May we suggest a local map for those unfamiliar with an area; telephone numbers are listed for those who are "lost".

You are invited to visit on . . .

JULY 11th — The Garden of Mrs. Alberta King, 939 Third Avenue, Los Angeles, Calif. REpublic 4-0402.

JULY 18th — The Garden of Mr. John E. Harris, 11679 Montana Avenue, Los Angeles, Calif. ARizona 3-1038.

JULY 18th — The Garden of Mr. and Mrs. Frank Gee, 4316 Barryman Avenue, Culver City, Calif. VERmont 8-3624.

JULY 25th — The Garden of Mr. and Mrs. Paul Behrends, 1633 Golden Gate Avenue, Los Angeles 26, Calif. NOrmandie 2-3795.

Our Gertrude White

A. B. S. members in Southern California will be pleased to know of the fine progress our active member, Mrs. Gertrude White, is making in her recovery from a fall. Mrs. White, a sixteen year member, is chief stoker of Parent Branch and South Gate Branch. She feeds fuel to the fire when the Branches need it most and is famous for her excellent plant tables. After having had an unpleasant experience in a fall, injuring her hand badly, we were happy to visit Mrs. White and hear of early days in California. Her family is one of the "first families" of Riverside. She would love to hear from her many friends, a card or note will be welcome.

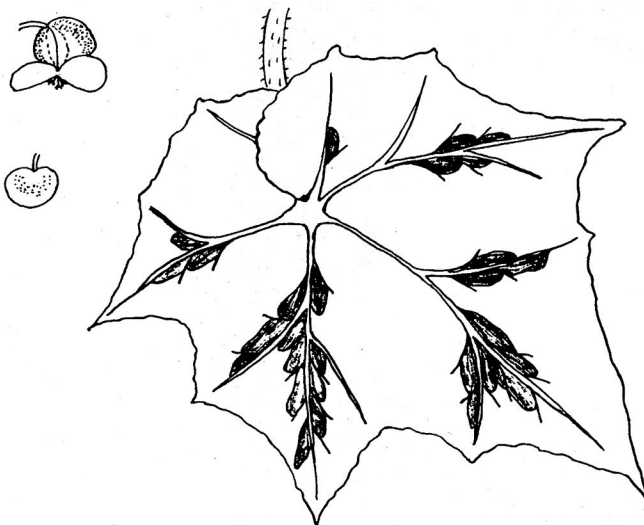
MRS. GERTRUDE G. WHITE
5932 Seville Avenue
Huntington Park, California.

Convention News

Jack Koebig, Chairman of the 1954 Convention and Flower Show Committee, has arranged an exhibitorium adjacent to the competitive Show for your nomenclature department. According to present plans, nearly all of the Begonias registered since 1951 will be displayed and clearly labeled. These plants will be discussed by qualified members, and provision has been made for tables and chairs, where any member can go to study Begonias. The parent plants will be represented also. This is a chance to see the progress being made by members of your society for your express study and benefit.

Mrs. Edna Korts is Chairman of this Nomenclature Room, and is preparing a full complement of the sixty or more registered Begonias.

—J. K.



B. Liebstar

DSB

—Dorothy S. Behrends Drawing

BEGONIA LIEBSTAR

Here is a new registered Begonia that should take top priority on all shade plant collectors' "Wanted" list. Primarily, because of its unusual beauty and stamina, but also for its outstanding distinction among the many silver-clad hybrids now available.

Susie Zug hybridized *B. liebmanni* and B. Carol Star in 1953, just one hundred years after the former was discovered in Mexico. The contraction of the parents' names, plus the resemblance to the seed parent, *B. liebmanni*, in color and cultural habit, makes it easy for the hobbyist to remember Begonia Liebstar's family tree. Credit should be given to Thomas MacDougall for rediscovering many species in Mexico during 1938 that had been lost to cultivation, and now form the foundation for so many outstanding hybrids. He found *B. liebmanni* growing on the side of volcanic slopes, high above the rain forests, where it had a cooler climate and less moisture than many of the lowland Begonias. This background is transmitted to its young, and particularly to Mrs. Zug's B. Liebstar.

The curling rhizome is a dark dull-red, trimmed with cream-colored flecks. The petioles are long, eight inches or more, round, yellow-green and bristling with hair. Light green, perpendicular short dashes are noticeable on the petioles.

Both sides of the leaves are equally attractive. The top is a bright lettuce-green with a more intense greenish veining radiating to the seven or eight sharp points on

the serrated, crinkled margin. On either side of the auxillary veins, is the lovely, bright aluminum bluish. The leaf underside shows the bright green, pronounced veins, embossed on the red-flushed background. The red tint is more evident as the leaves mature.

The leaves are intermediately lobed. The wide section of the ovate leaf swirls downward and underneath the top half of the narrow portion of the leaf. This backward helix form is a ready means of identification. The five by six inch leaves are covered with short, fine hair. The young foliage often shows a pink iridescence as the texture is thin but firm. Silver tints predominate between the nerve network, giving the leaves a gorgeous combination of colors.

The flowers are borne on peduncles an inch longer than the pedicels, giving the blossoms a nested appearance, rather than the tall inflorescences usually appearing on rhizomatous Begonias. The two-petal female blossoms are white with deep pink splashes on the exterior. This creates a pale pink appearance on the inner surface. The ovaries are a descriptive addition to the flower with unequal, three wings heavily-edged with dark rose. The male blooms have two petals, containing deep pink or rose splashes, similar to the female blossom.

Get B. Liebstar, and have one more of the Zug hybrids, worthy of entrance in the Begonia Beauty Parade.

—J. K.

PHILIPPINE SPECIES . . .

Begonia lagunensis Elm. n. sp.

Scandent and forming interlaced masses; stem soft, 1.5 cm. thick, watery, covered with a light gray bark; branches glabrous, succulent, reddish, numerous. Leaves alternately scattered, copious, descending, rigidly coriaceous and breaking with a snap, glabrous, light green above, paler green beneath even in dry state, flat, exceedingly variable in size, the smaller ones lanceolate, the larger ones oblong or ovately, the basal portion usually rounded and entire, slenderly acuminate or caudate at apex, margins apiculate or irregularly dentate, the medium-sized blades 5 cm. long by 2 cm. wide below the middle, curving, dull green; nerves usually 3 from near the base, the middle one with 1 to 3 side veins, much ascending, the larger ones branched, reticulations obsolete; petiole smooth, 1 to 3 cm. long, reddish; stipule 1 cm. long, linear, running into a sharp point, thin, brown at least when dry, glabrous.

Inflorescence from the uppermost leaf axils, few-flowered, glabrous, 3 to 5 cm. long; pedicels filiform, 1 cm. long, subtended by small folded bracts; staminate perianth segments 2, nearly 1 cm. long, ovately oblong, emarginate at the base, pink

or whitish; stamens numerous clustered in the middle; filaments short, subequal, glabrous; anthers brown when dry, ellipsoid, dehiscent around the apical edge and toward the base; pistillate segments 3, somewhat larger; styles 3, glabrous, bearing obscurely forked brown pulverulent stigmas; seed elliptic, 3-winged, 1.5 cm. wide across the top, gradually tapering from base to the rather conspicuous points.

Type specimens 9327 and 7467, A. D. E. Elmer, Lucban, Province of Tayabas, Luzon, May, 1907.

Scandent and forming bushes upon small stems 15 feet from the moist humus covered ground in the forest at 4000 feet of Mt. Banahao.

EDITOR'S NOTE: —

Due to the loss of so much valuable material in the Philippines, during the Japanese occupation, it is difficult to obtain data pertaining to their species begonias.

With the advanced student in mind, we will reprint, periodically, descriptions from the small amount of material on hand, to disseminate the information to all our members. The leaflet was edited by A. D. E. Elmer, A. M.

SEND A CARD . . . FOR GOOD CHEER

Some of our loyal, early day members are having to 'rest more' on orders from 'learned persons who know'. These members would enjoy hearing from their friends, even though the friends may be long distance or pen friends.

Word has reached us, through Constance Bower, that our beloved BESSIE BUXTON has had some more trouble, of the kind that beset her on the way home from the Convention in San Francisco. This is a recurrence and rest is prescribed, so let us remember her as of today, as the woman responsible for giving us the first detailed book on Begonias, in these United States. It was Mrs. Buxton who formed the Begonia Club that was originally a Round Robin of Begonia growers. Her enthusiasm was coupled with Mr. Dyckman's which gave impetus to the movement of a nationwide Begonia Society.

Our Founder, HERBERT P. DYCKMAN, has retired and been advised to rest. This news came from our good friends, Rose C. and Hugh W. Hixon. "Pop", as he is lovingly known to his many begonia friends, has been working too hard, and has been advised to take it easy until further notice. Calls are too tiring for him, but letters and cards are invited. Many people have asked

about him recently, and we pass along this news, not to alarm anyone, but the order of 'absolute rest and quiet' must be observed.

"Pop" Dyckman had intended visiting many people, on retirement, as he wanted to see all his friends in their own gardens, but this activity will have to wait for a while.

Let us all send a shower of good thoughts and cards to our beloved friends, to let them know we appreciate their part in the pleasures we have had, in growing Begonias as a Hobby.

—D. S. B.

Mrs. Bessie R. Buxton
114 Central Street
Peabody, Mass.

Herbert P. Dyckman
141 W. 53rd Street
Long Beach 5, Calif.

OUR CHOICE FISHER'S SELECT

6 Rex Begonias, postpaid \$ 5.00
13 Rex Begonias, postpaid \$10.00
Growing instructions with each order
Also Choice Rex Begonia Seed, per pkt., \$1.00

CARL E. FISHER

9221 Houston Street, Anaheim, Calif.
(1½ miles east of Buena Park)

Slanted Toward the Beginner

By Dorothy S. Behrends

BEGONIA DAYI is a rhizomatous begonia that is easy to grow from seed. It is from Mexico and was originally identified as *B. nigro-venia* Hort. ex Linden (a duplicate name). This information was ascertained, after the writer sent a fine herbarium specimen that William Brooks collected, to the Smithsonian Institution for identification by the eminent authority, Dr. Lyman B. Smith.

However, a few years ago, Mr. Ziesenhenné named this begonia in honor of an early-day begonia grower, Lambert Day. It is hoped that in giving this misnamed begonia a new name, that *Begonia dayi* will be accepted.

Those of us that are growing it from seed brought it recently by William Brooks, feel the name is incidental.

The shiny, waxed-like surface of the leaves are yellow-green. The veining is a heavy dark-brown on the surface, dark-red on the underside.

The blossoms are very small and dainty, compared to the heavy texture of the leaves. They are off-white in color and are not

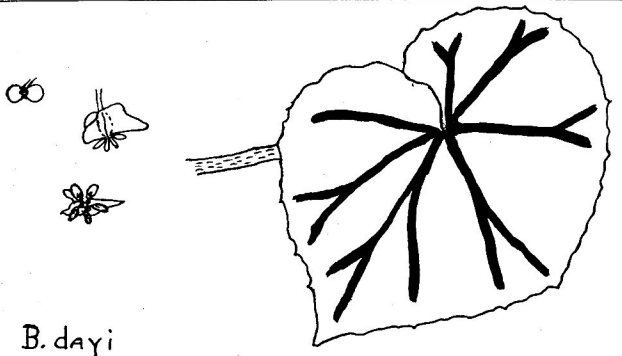
particularly an asset.

This begonia makes a fine wall basket specimen. The usual rhizomatous soil mix is fine for *Begonia dayi*.

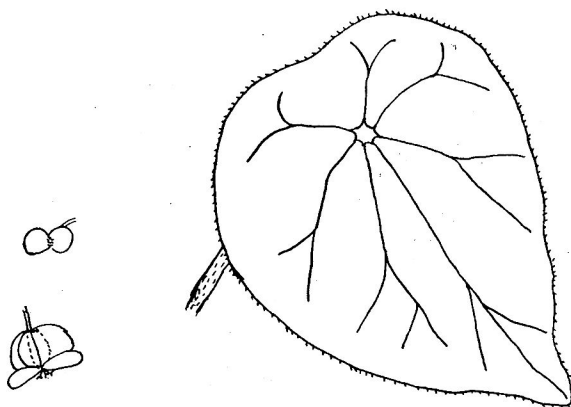
BEGONIA BROOKS' CARLOTA is a huge begonia in its native habitat. It is much more subdued in cultivation. There is some talk about this begonia being *B. nelumbiifolia*, but until the experts agree, we will grow it and enjoy it. Mr. Brooks found it growing in coffee *fincas* where it is considered a nuisance and is chopped regularly. The rhizomes grow to huge proportions in Mexico, under the ideal conditions that exist in the *fincas*.

The petate leaf is a bright green, ribbed at the veining that emanates from the stem. The margins gain a reddish band at maturity and are very colorful. The stems are covered with a brown fuzz or tomentum.

Occasionally, the seeds brought in will produce a plant with red veins, when the plant is immature. This also is fine for a collection. As a potted subject, the stems reach about fifteen inches, and the leaves measure seven by nine inches.



B. dayi



B. Brooks' CARLOTA

1954 FLOWER SHOW SCHEDULE

Los Angeles, California

DIVISION A — *B. Semperflorens-cultorum*

- Class**
1. Bedding begonias, single flowered, such as: *B. s-c Carmen*, *B. s-c Prima donna*, *B. s-c Apple blossom*, etc.
 2. Bedding begonias, double flowered, such as: *B. Gustav-Lind*, *B. Geneva beauty*. (white, rose, scarlet, etc.)
 3. Distinctive hybrids and mutants of *B. semperflorens-cultorum* and *B. semperflorens*, such as: *B. Rosea-gigantea*, *B. Corbeille de feu*, *B. Calla lily*, etc.
 4. Hanging baskets with specimen plants of classes 1, 2 or 3 (not more than 3 plants.)
 5. Wall pockets with specimen plants of classes 1, 2 or 3. (not more than 3 plants.)

DIVISION B — Fibrous Begonias

- Class**
6. Tree types, such as: *B. lucerna*, *B. compta*, *B. Orange Rubra*, *B. Sceptum*, etc.
 7. Intermediate types, such as: *B. argentea-guttata*, *B. preussen*, etc.
 8. Low growing types such as: *B. Medora*, *B. Jinnie May*, etc.
 9. Hanging baskets with one specimen plant of climbing or scandent types, such as *B. Limminghei*, *B. scandens*, *B. glabra*, etc.
 10. Wall pockets, climbing or scandent types, one specimen plant.
 11. Distinctive, unusual or odd foliage, erect, such as: *B. Mrs. Fred Scripps*, *B. venosa*, *B. deliciosa*, *B. luxurians*, etc.
 12. Hairy begonias, such as: *B. Haageana*, *B. Nelly Bly*, etc.
 13. Sparsely hairy begonias, such as: *B. Braemar*, *B. Dorothy Grant*, etc.
 14. Hanging Baskets, one specimen plant of classes 11, 12 or 13.
 15. Wall pockets, one specimen plant of classes 11, 12 or 13.
 16. Other varieties not specified.

DIVISION C — Rhizomatous Begonia Group

- Class**
17. Low-growing, small-leaved types, such as: *B. Schulziana*, *B. Boweri*, *B. Spaulding*, etc.
 18. Large star type such as: *B. ricinifolia*, *B. Sunderbruchi*, *B. nigricans*, etc.
 19. All other star types such as: *B. Silver Star*, *B. Maphil*, *B. Glendale*, *B. Bow Nigra*, etc.
 20. Spiral and crested types, such as: *B. Bunchi*, *B. erythrophylla helix*, *B. Ricky Minter*, *B. crestabruchi*, etc.
 21. Large-foliage, such as: *B. Freddie*, *B. Barkeri*, etc.
 22. Distinctive, unusual or odd foliage, such as *B. acida*, *B. versicolor*, *B. pustulata*, etc.
 23. *B. imperialis* and its hybrids.
 24. Baskets and wall pockets of classes 17 to 23 incl. One specimen plant.
 25. Other varieties not specified.

DIVISION D — *Begonias rex-cultorum*

- Class**
26. Large-leaved types, such as: *B. r-c Lesoudsi*, *B. r-c Cardoza Gardens*, *B. r-c Carnot*, etc.
 27. Medium-leaved types, such as: *B. r-c Helen Lewis*, *B. r-c Glory of St. Albans*, *B. r-c Chretien*, etc.
 28. Small-leaved types, such as: *B. r-c Sir Percy*, *B. r-c Silver Fleece*, *B. r-c Lucy Closson*, etc.
 29. Miniature types, distinguished from the small-leaved types by their short stubby rhizomes and very small, compact growth, such as: *B. r-c Annie Robinson*, *B. r-c Toy*, *B. r-c Butterfly*, and the Roy Berry miniature plants.
 30. Miniature spiral types, such as: *B. r-c Berry's Brown Curl*, *B. r-c Berry's Gray Curl*, *B. r-c Cutie*, etc.
 31. Helix spiral types, such as: *B. r-c Countess Louise Erdoedy*, *B. r-c Curly Closson*, *B. r-c Bronze king*, etc.
 32. Upright and branched types, such as: *B. r-c Van-ex*, *B. r-c Nigger Tree*, *B. r-c Silver Sweet*, etc.
 33. Wall pockets, one specimen plant of classes 26 to 32 incl.
 34. Any other variety not specified.

DIVISION E — Tuberous Rooted Varieties (Other than *Tuberhybrida*)

- Class**
35. Species, such as: *B. sutherlandi*, *B. martiana*, *B. davisii*, *B. Macbethi*, etc.
 36. Hybrids, such as: *B. Lulandi*, *B. Weltoniensis*, *B. Richard Robinson*, etc.
 37. All *Socotrana* and Derivatives.
 38. Hanging baskets, one specimen plant, Classes 35 to 37 incl.
 39. Wall pockets, one specimen plant, Classes 35 to 37 incl.

DIVISION F. — Tuberhybrida, one specimen plant.

- Class 40. Single forms, flowers suggestive of the wild rose.
41. Multiflora and multiflora nana; low bushy, compact; many-flowered, both single and double.
42. Camellia forms: flowers camellia-like, both single and double.
43. Fimbriata plena: Large, double, carnation-like flowers.
44. Crispa: large, single, petal-margins frilled.
45. Cristata: large, single, flowers with crestlike outgrowth on each petal.
46. Rosebud: rose-like in appearance.
47. Picotee: irregular border of a different color bleeding into the dominant shade.
48. Marmorata: camellia form with a rose background blotched and spotted white.
49. Ruffled camellia and novelty types as distinguished from fimbriata plena, large blooms.
50. Marginata: camellia form, petals edged with a thin, precise line of a different color.
51. Pendula (syn. Lloydii): drooping type suitable for suspended containers; flowers numerous, both large and small.

DIVISION G — Collections

- Class 52. Collection of 3 begonias - each of a different class.
53. Collection of 6 begonias - each of a different class.

DIVISION H — Out of State Entries, specimen plants, limit 5 inch container.

- Class 54. Fibrous Begonia.
55. Rhizomatous Begonia.
56. Rex Begonia.
57. Tuberous Begonia.
58. Photograph: 1 - 8 x 10 inch glossy, specimen plant, grown by exhibitor in accordance with flower show rules.
59. Photograph: 1 - 8 x 10 inch glossy, collection as in classes 52. and 53, grown by exhibitor in accordance with flower show rules.

DIVISION I — New Begonia introductions, hybrids or crosses, registered since September 1, 1953. OPEN TO ALL AMATEUR AND COMMERCIAL EXHIBITORS (SPECIAL PROVISION FOR THIS DIVISION ONLY). Plants in this division are not eligible for sweepstakes award.

- Class 60. Seedlings up to 1 year old. (fibrous, tuberous and rhizomatous only).
61. Mature plants, up to 2 years old. (fibrous, tuberous and rhizomatous only).
62. Mature plants, over 2 years old. (fibrous, tuberous and rhizomatous only).
63. Rex seedling 3 years or older. (rex seedlings take at least 3 years before they attain their true coloring, hence this class).

DIVISION J — Junior Growers (Children of A.B.S. Members to age 18).

- Class 64. Fibrous begonia, one specimen plant.
65. Rhizomatous begonia, one specimen plant.
66. Rex begonia, one specimen plant.
67. Tuberous begonia, one specimen plant.

DIVISION K — Ferns

- Class 68. Mounted, large-leaved epiphytic, such as Platyceriums.
69. Ferns in soil mixture, such as: Platyceriums, Polypodiums, etc.
70. Hanging basket, fine fronds or heavy fronds.
71. Potted specimen, such as tree ferns.

DIVISION L — Saintpaulias

- Class 72. Single crown plants, general foliage, all colors.
73. Single crown plants, Girl foliage, all colors.
74. Multiple crown plants, all foliages, all colors.

DIVISION M — Bromeliads

- Class 75. Billbergias.
76. Cryptanthus.
77. Tillandsias
78. Aechmeas.

DIVISION N — Fuchsias

- Class 79. Upright varieties.
80. Hanging varieties.

DIVISION O — Sinningias

- Class 81. Gloxinias - all varieties.
82. Stroxinias - all varieties.

DIVISION P — Orchids

- Class 83. Cymbidiums.
84. Cattleya.

DIVISION Q — Other Shade Plants and Tropicals.

- Class 85. Coleus.
86. Philodendrons, large-leaved.
87. Philodendrons, medium-leaved.
88. Any other shade or tropical plant.

DIVISION R — Flower Arrangements (amateurs only).

- Class 89. Low container, begonia flowers and foliage, other than tuberhybrida.
90. Tall container, begonia flowers and foliage, other than tuberhybrida.
91. Low container, tuberous begonias (tuberhybrida)
92. Tall container, tuberous begonias, (tuberhybrida)
93. Begonias and other plant material, any type, low container.
94. Begonias and other plant material, any type, tall containers.
95. Rex begonia foliage.
96. Rex begonia foliage, with other plant foliage, no flowers.
97. Other shade or tropical plant material, not listed.
98. Corsages, tuberous begonias (tuberhybrida)
99. Corsages, begonia blossoms or foliage, other than tuberhybrida.
100. Corsages, all other varieties.

DIVISION S — Flower Arrangements (commercial)

- Class 101. Low container, begonia flowers and foliage, other than tuberhybrida.
102. Tall container, begonia flowers and foliage, other than tuberhybrida.
103. Low container, tuberous begonias (tuberhybrida).
104. Tall container, tuberous begonias (tuberhybrida)
105. Begonias and other plant material, any type, low container.
106. Begonias and other plant material, any type, tall container.
107. Rex begonia foliage.
108. Rex begonia foliage, with other plant foliage, no flowers.
109. Other shade or tropical plant material, not listed.
110. Corsages, tuberous begonias (tuberhybrida)
111. Corsages, begonia blossoms or foliage, other than tuberhybrida.
112. Corsages, all other varieties.

DIVISION T — Terrariums and Planters.

- Class 113. Planted with begonias.
114. Planted with other house plants.

DIVISION U — Educational Exhibits

- Class 115. Educational exhibit consisting of material assembled to promote increased knowledge and appreciation of begonias, such as: begonia seedlings, begonia illustrations, begonia literature, display of related begonias, begonia cultural techniques. Amateur or commercial persons will compete together.

DIVISION V — Branch Exhibits

DIVISION W — Other Garden Club Exhibits

DIVISION X — Commercial Exhibits

1954 A.B.S. FLOWER SHOW RULES AND REGULATIONS

1. All exhibits are, from the commencement to the close of the exhibition, in charge of the Show Committee.

2. Competitive entries must be made according to divisions and classes; nonconformity will be subject to disqualification.

3. All competitive entries must be in place by 11:00 a.m. Friday, Sept. 3rd, and judging will commence at 1:00 P.M. All entries not in by 11:00 A.M. will be eligible only for non-competitive exhibition.

4. All entries will receive sealed entry cards at time of entering plants, allowing same to remain sealed until after judging.

5. Chairman of Judges Committee will assume complete charge at start of judging, and no person will be allowed to interfere, to offer criticisms, or to distract the decisions of the judges. Only judges and their clerks will be permitted in show room at time of judging.

6. Any Chairman or members of committees engaged in the show preparation are permitted to exhibit and to compete under the same conditions, as any other exhibitor, with adherence to all show rules.

7. No entry may compete for more than one premium, nor may more than one entry

be made in any class with the exception of Division I. Additional entries in any one class will not be permissible by a 2nd or 3rd member of a family from the same garden.

8. All plants and flowers exhibited in competitive classes must have been grown by the exhibitor or been in his possession for 3 months prior to the show. This rule does not apply to flower arrangements.

9. Amateur Grower is one who grows plants for self pleasure and by self effort, and does not hold a commercial license. Any member of the family not falling into this category disqualifies the entire family as amateurs.

10. A commercial grower may enter any class for exhibition only and will not be eligible for ribbons or cash awards in that class. However, plant will be judged for the President's Challenge Trophy for the Best Begonia in the Show.

11. All plants and flowers must be clearly and correctly named. Errors in naming will not disqualify, but judges will recognize correctness and clearness of names as telling in favor of an exhibit in close competition.

12. The management shall have the right to exclude inferior or diseased plants.

13. No plant may be removed from the Show except by official permission.

14. While the management will exercise due caution and care in safeguarding exhibits, it cannot assume responsibility for loss or injury.

15. Judges shall award premiums as in their opinion an entry merits. Whether a group of entries are in competition, or an entry is without competition, it will be in their discretion to award only on the merits, or no award.

16. Trophy awards are limited to Amateur A. B. S. members only, with the exception of the President's Challenge Cup, MacLanahan Trophy and Outside Garden Club Trophy.

17. Sweepstakes Trophy will be awarded by the point system and will be awarded on total points won only in the begonia divisions.

18. All booth and island exhibits must be completed by 11:00 a.m., September 4th. A.B.S. Branch exhibits only, shall be eligible for the Jack Bailey Trophy.

19. All trophies must remain on display for the duration of the flower show.

20. Individual entries in the competitive show are limited to A. B. S. members only.

21. Challenge trophies are to be returned to the A. B. S. Flower Show Chairman two weeks prior to the 1955 A. B. S. Flower Show.

SPECIAL AWARDS

The following Challenge Cups will be awarded:

PRESIDENT'S CHALLENGE TROPHY — To be awarded to the Best Begonia in the Show displayed by either amateur or commercial entrant. The large trophy was presented to the A. B. S. by Calvin E. Trowbridge. Accompanying the large Challenge trophy is a cup given by President Glenn W. Motschman which will be the permanent reward of the trophy winner.

WORTH BROWN CUP — Given for the outstanding Tuberous Begonia in the show.

EFFIE CHAPMAN CUP — For the best Fibrous Begonia in the show.

GONDA HARTWELL CUP — For the best Rex Begonia in the show.

JOHN R. WILLIAMS CUP — For the best Rhizomatous Begonia in the show.

JACK BAILEY TROPHY — To the most outstanding A. B. S. Branch booth display.

REDONDO BEACH BRANCH OUT OF STATE ENTRY CUP — For the best Begonia sent from an out of state member (five inch pot limit).

CONNIE LEIGH HENDRIX CUP — For the best amateur flower arrangement in the

show.

SYLVIA AND BUCK LEATHERMAN TROPHY — For the best juvenile entry by a child under 18 years of age who is related to an A.B.S. member.

MACLANAHAN NURSERY TROPHY — For the best commercial booth display in the show.

Additional special awards are:

OUTSIDE GARDEN CLUB TROPHY — For the best display by an outside garden club.

A.B.S. SWEEPSTAKES TROPHY — To the winner of the most points in the Begonia divisions of the show.

THE NATIONAL BOARD EDUCATIONAL DISPLAY \$25.00 AWARD — To promote knowledge of Begonias. Open to all.

ALFRED D. ROBINSON MEMORIAL MEDALS — To the hybrid Begonias for 1944, 1948, 1949 and 1950.

Point system for awarding of Sweepstakes trophy:

First place	3 points
Second place	2 points
Third place	1 point



The

Begonia

Branches

1954 BRANCH OFFICERS

CENTRAL FLORIDA BRANCH:

President: Mr. Lloyd Castle
 Vice-President: Mr. M. R. Bekemeyer
 Secretary: Mrs. Lou Mankamy
 Treasurer: Mr. Roy Mankamy

EVA KENWORTHY GRAY BRANCH:

President: Frank Quintana
 Vice-President: E. S. Marshall
 Secretary: Mrs. E. S. Marshall
 Corr. Secretary: Tillie Genter
 Treasurer: B. B. Stanford

LA MESA BRANCH:

President: Mrs. Charles Williams
 Vice-President: Mr. P. P. Lee
 Secretary: Mrs. Lena Deem
 Treasurer: Mrs. Ione Blair
 Nat'l Director: Mrs. Edward Tweed
 Board Member: Mrs. Joe Lowry

WESTERN PENNSYLVANIA BRANCH:

President: Mrs. Warren Barton
 Vice-President: Mrs. Clarence Eckert
 Secretary: Mrs. Robert Beaumont
 Corr. Secretary: Mrs. Joseph Rock
 Treasurer: Mrs. R. L. Simpson
 Pub. Director: Mrs. R. A. McPherson

WILLIAM PENN BRANCH:

President: Mrs. Ernest C. Drew
 Vice-President: Mrs. Malcolm Lloyd
 Secretary and Treasurer—
 Mrs. Joseph B. Townsend, Jr.

The SAN FRANCISCO BRANCH has a new meeting place, 266 Laguna Honda Blvd. It is new, roomy, conveniently located, and has the proper atmosphere for a flower group meeting. Instead of paying rent, the members will plant and maintain a flower garden in the space between the Lodge and the adjacent parking lot. A border of semperflorens Indian Maid has been planted; approximately a third of the available space will be devoted to tuberous begonias. Ferns, fuchsias and pelargoniums have also been planted, and the sunny corner has miniature dahlias. We expect a colorful garden this summer, even though we were late in starting.

WILLIAM G. DAMEROW, President
 San Francisco Branch.

In Memoriam

We are grieved at the passing of one of our members, Lewellyn Bentley, our beloved "Begonia Benny", a Past President of the Riverside Branch, who went to his reward in April, after a long illness. Our sympathy goes to his wife, Essie, and son, James

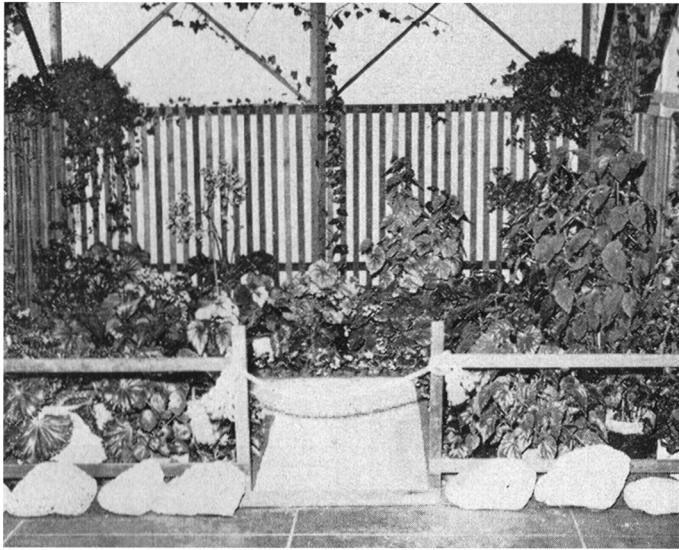
ETHEL PRIOR, President
 Riverside Branch.

WELCOME TO OUR NEWEST BRANCH —

The LOS ANGELES BRANCH of the American Begonia Society was formed May 19, 1954. This is the first Branch to be formed in this area to have afternoon meetings. The members are planning many trips and visits to places of interest to begonia

growers.

The first officers are: President, Mrs. Della MacLanahan; Vice-President, Mrs. Dorothy Behrends; Secretary, Mrs. Marcia Solovy; and National Director, Mrs. Margaret Fenn.



RIVERSIDE BRANCH SHOW

RIVERSIDE BRANCH had a wonderful Flower Show on April 25th and 26th, in Riverside. Several Begonias were entered in competition for the first time, and many ribbons were won by members of the Riverside Branch. The picture shows the Branch display of outstanding Begonias.

Through this display, the Branch has tak-

en in five new members already, and has stimulated interest in growing Begonias in this area. One man, on seeing the Rex Begonia 'American Beauty', declared it was an artificial plant. Next year we plan a bigger than ever display of our artificials.

ETHEL PRIOR, President
Riverside Branch.

★ Calendar ★

July 15th

Footbill Branch: Round Table discussion at home of Mr. and Mrs. A. B. Clarke, 546 N. Campus Ave., Upland, Calif. Pot Luck Supper.

July 16th

Judging Class: Lecture on "The Romance of Design" by Carmen Denton Edgar, at Plummer Park, Hollywood, Calif., 8:00 P.M.

July 17th

New England Branch: Pilgrimage to Marblehead at 10:30 A.M.

July 17th and 18th

South Bay Garden Club: Flower Show at Mira Costa High School, Manhattan Beach, Calif. No admission charge.

July 18th

El Monte Community Branch: Pot Luck Dinner at 4:00 P.M. in the garden of Mrs. Charlotte Gay, 1621 S. Second St., Alhambra. Speaker, Mr. Jimmy Fields from Fieldcrest Nursery.

July 21st

Hub City Branch: Pot Luck Dinner at the home of Mrs. Dorothy Powell, 3180 Carlin Ave., Lynwood, Calif.

July 24th

Pasadena Branch: Pot Luck Dinner, 4:00 P.M. at the home of Mr. and Mrs. G. L. Johnson, 1320 Ramona Rd., Arcadia, Calif.

July 29th, 30th and 31st

Vancouver Horticultural Society: Third Annual Begonia Show in Hudson's Bay Company Auditorium, 9:30 A.M. to 9:30 P.M. Saturday, July 31st, 9:30 A.M. to 4:00 P.M. For further information write Mrs. E. H. Blakey, Secty., 242 East 57th Ave., Vancouver 15, B. C.

July 31st and August 1st

California Fuchsia Society: Flower Show at Hollywood Park, Inglewood, Calif., Saturday, July 31st, 2:00 P.M. to 10:00 P.M.; Sunday, August 1st, 10:00 A.M. to 10:00 P.M. Admission — 35 cents.

August 6th and 7th

Southern Alameda County Branch: Ninth Annual Begonia and Shade Plant Show, at Veteran's Memorial Bldg., Hayward, Calif.

September 4th, 5th and 6th

22nd Annual American Begonia Society Convention and Flower Show, at the Clark Hotel, 426 So. Hill Street, Los Angeles, California.

SLATE OF 1954 NOMINEES

PRESIDENT-ELECT



Glenn Morrow

Mr. Glenn Morrow is well qualified to serve the American Begonia Society as President-Elect. He has been a resident of El Monte since 1936.

He first became interested in growing Begonias several years ago, this interest causing him to join the American Begonia Society in 1951, through the El Monte Community Branch.

Glenn and his wife, Daisy, have been very active members of the El Monte Branch. He served the Branch in 1953, as an exceptionally fine National Director.



Joe Taylor

Joe Taylor has been a member of the Redondo Area Branch for the past three years, serving as Secretary, Treasurer and Flower Show Chairman for the Branch during that time. He was also Treasurer for the 1953 Convention and Flower Show in Redondo Beach. He is one of the most active members of his Branch, and with his wife, Ruth, are often hosts to various Branch activities at their home.

Mr. Taylor has held offices in both the California Fuchsia Society, and the National Fuchsia Society. At present, he is serving the latter half of his term as National President of the National Fuchsia Society.

His interest in Begonias and shade plants is evidenced in his greenhouse and lath-house, and in his use of them in his position as Park Maintenance at Redondo Beach City Park.



Do you have one of these attractive green and gold pins for your lapel?

Send your name, address and \$3.32 to Mrs. Edna L. Korts, 3628 Revere Ave., Los Angeles 39, Calif., and you, too, will be wearing your membership emblem.

HYPONEX®

SOLUBLE PLANT FOOD COMPLETE

Grows Better Plants in Soil, Sand or Water

Simply dissolve and water all your house plants, garden flowers, vegetables, shrubs and lawn. Feeds instantly. If dealer can't supply send \$1 for 1 lb. Makes 100 Gals.

HYDROPONIC CHEM. CO., Copley, Ohio, U.S.A.

A. B. S. STATIONERY

(Cost Price to Branches)

	per 100	per 50	per 25
Letter, sm.	\$.80	.40	.20
Letter, lg.	1.10	.55	.30
Envelope, sm. ..	1.25	.65	.35
Envelope, lg. ..	1.55	.80	.40

Write to: Mrs. Edna L. Korts
3628 Revere Ave., Los Angeles 39, Calif.

Tropical Homes and Gardening

Is the Leading Lower South and Sub-Tropical Gardening Magazine

One Year \$3.00 Two Years \$5.00
CORAL GABLES BOX 804 FLORIDA

TREASURER

Lucy A. Sault was born in Pasadena, California, is a charter member of the Native Daughters of the Golden West, Parlor No. 278, a charter member of the American Legion Auxiliary Unit No. 287, and has held every office in both organizations.

Mrs. Sault joined the Inglewood Branch of the A. B. S., but became a charter member of the Redondo Area Branch when it was organized. She has served as both Secretary and Treasurer for her Branch.

She is an accountant, in charge of transportation for the U. S. Navy, during World War II, at Terminal Island Base. Has also been a Notary Public for the past twelve years, and served as advertising manager for the California Fuchsia Fan.



Lucy A. Sault



Ethel Arbuckle

Marie Trowbridge has been a member of the Inglewood Branch of the American Begonia Society for many years. She and her husband, Cal, have been very active in many and various activities of the Society in both Branch and National levels.

She has been employed as a bookkeeper for Douglas Aircraft Company for many years, thus having the experience and knowledge that is necessary for serving as Treasurer.

As Treasurer for the 1950 Convention sponsored by the Inglewood Branch, she performed an outstanding job. She also served as the Treasurer for the Branch in 1953, and is now their Parliamentarian.



Marie Trowbridge



Fred Browne

VICE-PRESIDENT

Ethel Arbuckle has been a member of the American Begonia Society for many years, her interest and enthusiasm in Begonias being proven by her activities for the Society.

Mrs. Arbuckle has served as both Treasurer and President of the South Gate Branch, as well as its National Director for 2 years.

She is also very active in the Long Beach Parent Branch of the A. B. S.

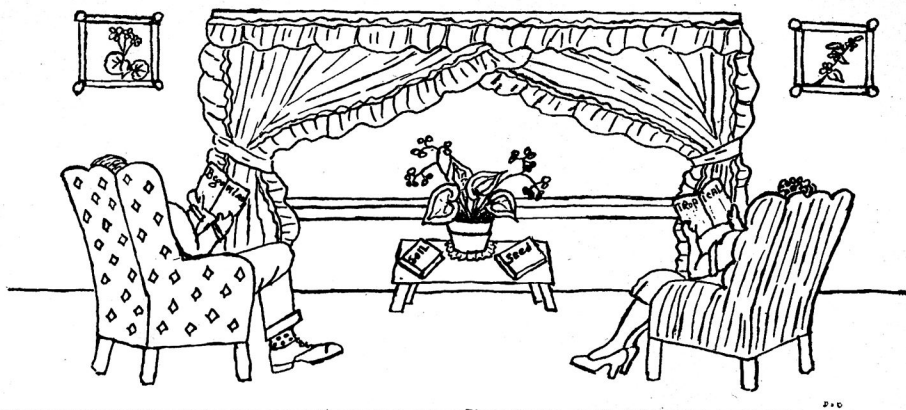
Fred Browne has been a member of the San Gabriel Branch since 1951, serving as Branch President during 1952. In addition he was Chairman for the Branch Flower Show in August of 1952.

In 1953 he was elected as National Director from the San Gabriel Branch. He also served on the Ways and Means Committee of the National Board, helping in the execution of its many projects.

Mr. Browne is a commercial artist by profession, as well as an enthusiastic 'Begoniaite'.

"Join A Branch"
Resolve to Learn More About
Begonias This Year

Renew your membership promptly by making all checks payable to the American Begonia Society, and mailing to the Membership Chairman, Box 2544, Los Angeles 54, California.



Armchair Gardening

Clayton M. Kelly Seed Fund Flight

We have received several letters asking us for a seed list. We do not have a special list compiled; however, we are going to start at the beginning of our files, and list as many as we can each month. These will be in addition to the new seed we offer.

The following, any six for \$1.00, any fifteen for \$2.00:

- | | |
|---|---|
| <ul style="list-style-type: none"> # 101 Hawaiian species # 102 Hybrid Rex # 103 picta (India) # 104 gigantea # 105 Calla Lily # 106 hirtella # 107 German multiflora # 108 vitifolia # 109 scandens # 110 Mexican species # 38 # 111 Mixed semperflorens # 112 josephi | <ul style="list-style-type: none"> # 114 leptotricha # 115 foliosa # 116 Mixed species (Different varieties) # 117 Pink Shasta # 118 Picta Rosea # 119 boliviensis # 121 evansiana # 122 sutherlandi # 123 Lloydii # 124 Hexe German Heterosis # 125 Kathe Teicher Heterosis # 126 Blütenmeer Heterosis |
|---|---|

The following, any four for \$1.00, any ten for \$2.00:

- | | |
|---|--|
| <ul style="list-style-type: none"> # 150 India type Rex # 151 Aulmifolia # 152 Xanthina Rex type (yellow flowers) # 153 pearcei # 154 Begonia 2579 # 155 incarnata Sandersi | <ul style="list-style-type: none"> # 156 incana # 157 Mixed Rubra # 158 Checkerboard # 159 Holly-leaved # 160 Kellermani # 161 heracleifolia pyramidalis |
|---|--|

We offer the following new seed, any six for \$1.00:

- | | |
|---|--|
| <ul style="list-style-type: none"> # 133 subvillosa # 134 Bonnie Jean hybrid # 135 Brooks' Carlota | <ul style="list-style-type: none"> # 136 dayi # 139 metallica # 140 acuminata |
|---|--|

(See drawings and descriptions of # 135 and # 136 on page 153)

We have received from Germany, the much talked-of German Rex. .50c per packet. Also, the German Streptocarpus, which is from various accounts, very outstanding. .50c per packet.

We have hybrid Billbergia, .25c; Platycerum bifercatum fern spore, .25c.

THE MACLANAHANS
Seed Fund Administrators

3734 Overland Avenue, Los Angeles 34, California

Notice to New Members

The seeds sent to new members, or to those sponsoring new members, are Mixed Fibrous Begonias.

ROUND ROBIN NOTES

An excerpt from the late Mrs. Elsie Wallis' notes, —

"Some of you, perhaps many of you, have heard the story of Marjorie Daw. This amusing story comes from Florida, where it is called the Begonia Vine. A handsome plant 15 feet tall, with many clusters of crimson flowers grew over a cottage porch. Passersby gazed and admired. One day an automobile, followed by a truck, stopped at the cottage door. The chauffeur announced that his lady had come to buy the Begonia Vine and had brought skilled men to

transplant it. In came the men, ready to dig, and the amazed owner had much difficulty in making their employer understand that her Begonia Vine was not for sale, at any price. Being foiled on this occasion, a realtor was sent later, to buy the house in order to get the begonia. This, too, was refused, but peace was restored by presenting a handful of cuttings to the persistent buyer."

Any member wishing to learn more about any given subject on shade plants may contact the Robin Chairman, Mrs. Marie Reed, at 325 Breed Ave., San Leandro, Calif., and make their requests. Please state whether you are a beginner or an advanced student.

A. D. ROBINSON MEDALS PRESENTED

The Alfred D. Robinson Medals were awarded May 16, 1954 in Santa Barbara, California. Mrs. Elsie Frey received a medal for her outstanding hybrid, B. Silver Star, introduced in 1945. Mr. Rudolf Ziesenhenne received the coveted award for his Begonia, B. Freddie, as the best hybrid of 1946. The presentation was made by the Chairman of the Awards Committee, Mrs. Edna L. Korts.

A very enjoyable day was had by the visitors from 11 Branches for this event. The Santa Barbara Branch had arranged for

visitations to some outstanding gardens and a wonderful dinner in the garden of their meeting place. Many of the National Board Officers were present, and we were happy to have a visitor from the Philobegonia Branch — the very charming Mrs. Cecily Bailey.

The President of Santa Barbara Branch, Mrs. Allen, introduced the National President, Glenn W. Motschman, who gave a short history of the growth of the American Begonia Society in foreign lands, and outlined the part the late Alfred D. Robinson played, in his encouragement of hybridists.



Mrs. Edna L. Korts, Mr. Rudolf Ziesenhenne, Mrs. Elsie Frey and National President Mr. Glenn W. Motschman.



HAIL TO MRS. CONGDON!

Mary Elizabeth Congdon is living proof that it is not always the hybridizer that promotes interest in Begonias. As the First Librarian of the American Begonia Society, she may be credited with helping to create enthusiasm in the 'thirties'.

Four feet eleven inches tall, packed with enthusiasm and early-day hybrid knowledge, this seventy-eight year old 'dresden-doll type' member is active today as the membership secretary of the Long Beach Parent Branch. Mrs. Congdon is little known away from the Parent Branch, but hereafter is sure to be recognized at all functions.

She has kept records of all activities during these years, and has a complete file of *BEGONIANS* for ready reference; and is most high in her praise of the present-day *BEGONIAN*.

When the Society was called the California Begonia Society, Mrs. Congdon typed three copies of the early volumes published, and placed them in the Library of the Parent Branch. After the decision to dissolve the Branch Library, she presented these copies to the National (now International) Board Library.

Mrs. Congdon was born in England and shared a happy married life with her hus-

band, Oliver, who was termed 'a friend of the family' prior to their marriage. They had one son, Roy L., and after the passing of her husband, Roy continued to maintain a comfortable home for 'Liz' — as her husband affectionately dubbed her.

The Congdons moved to Long Beach in October, 1909, or the so-called 'early days'. Their home was considered 'far out'; it is now nestling among business establishments, but Mrs. Congdon will not think of leaving her home.

The American Begonia Society is the only society Mrs. Congdon ever joined. Not many of us can make that statement. She has missed only six meetings, on account of illness, and attended all but three National Conventions.

She reports that the Charter Members of the A. B. S. were all men. This news came as a slight shock, but it appears history repeats itself, as the Charter Members of the newly-organized British Branch are "all men" also.

It is A. B. S. members of this type, giving generously of their time and abilities, that have been and are, the foundation and growing strength of our beloved Society.

HAIL TO MRS. CONGDON.

—D. S. B.

Slide Library

I have had a request for slides on Branch exhibits from one of our Washington Branches, but alas, we had very few. Any-one that has slides they would like to sell to the Slide Library, or would let us make duplicates would be greatly appreciated. I do not have enough rhizomatous slides to make a full set. To list what I have would

take too much space. The only thing I can say is, to send me the slides and I will keep what I need. These I will pay for, and return the remainder. Or have the duplicates made, whichever you request.

VELDA SCALLEY

Slide Librarian.

BRANCH MEETING DATES AND PLACES

(Visitors always welcome at these meetings.)

BRITISH BRANCH

F. J. Bedson, Secy.
Kent, England

CENTRAL FLORIDA BRANCH

1st Friday, July 2, Aug. 6, 8:00 p.m.
Lounge, Florida Power Co.
Winter Park, Fla.
Mrs. Lou Mankamyer
20 Pershing Place, Orlando, Fla.

DALLAS COUNTY BRANCH, TEXAS

1st Thursday, July 1, Aug. 5, 7:00 p.m.
Member's Residences
Mrs. W. H. Buntin, Cor. Secy.
3113 Parker Dr., Dallas, Texas

EAST BAY BRANCH

2nd Thursday, July 8, 7:45 p.m.
Willard School, Telegraph at Ward
Berkeley
Mr. Robert May
1140 Evelyn Ave., Albany, Calif.

EL MONTE COMMUNITY BRANCH

3rd Thursday, July 18, 4:00 p.m.
Gay Home
1621 So. 2nd St., Alhambra, Calif.
Mrs. Virginia Brandon, Cor. Secy.
3012 W. Norwood Pl., Alhambra, Calif.

FOOTHILL BRANCH

3rd Thursday, July 15, 6:30 p.m.
Clarke Home
546 N. Campus Ave., Upland, Calif.
Mrs. C. W. Hall, Cor. Secy.
358 E. Arrow Hwy., Upland

FORT ELSA BRANCH

1st Saturday, July 3, Aug. 7, 2:30 p.m.
Miss Lola Price, Secy.
628 Beech Ave., Laurel Springs, N. J.

GLENDALE BRANCH

4th Wednesday, July 28, 8:00 p.m.
Tuesday Afternoon Club, 400 N. Central
Mrs. Irma Brown, Cor. Secy.
3633 Revere Ave., L. A. 39, Calif.

GRAY, EVA KENWOOD BRANCH

3rd Monday, July 19, 7:30 p.m.
Community House, La Jolla
Tillie Genter, Cor. Secy.
7356 Eads Ave., La Jolla, Calif.

GRAYS HARBOR BRANCH

2nd Monday, July 12, 8:00 p.m.
Hoquiam Pub. Library, or Messingale &
Rosenear Music Store, Aberdeen, Wash.
Mrs. Jessie B. Hoyt, Secy.
1013 Harding Road, Aberdeen, Wash.

GRUENBAUM, MARGARET BRANCH

4th Tuesday, July 20, 10:30 a.m.
Home of Members
Box Lunch 12:30, Program following
Mrs. Ernest Jones, Secy.
R.F.D., Willow Grove, Pa.

HOLLYWOOD BRANCH

3rd Wednesday, July 21, 7:30 p.m.
Plummer Park, 7377 Santa Monica Blvd.
Mrs. Maude A. Cooper, Cor. Secy.
1014 Havenhurst Dr., Hollywood 46, Calif.

HOUSTON TEXAS BRANCH

1st Saturday, July 3, Aug. 7, 10:00 a.m.
Garden Center, Herman Park
Mrs. Grant Herzog, Secy.
12600 Broken Bough, Houston 24, Tex.

HUB CITY BRANCH

COMPTON-LYNWOOD

3rd Wednesday, July 21, 6:30 p.m.
Powell Home
3180 Carlin Ave., Lynwood, Calif.
Mrs. Kathryn Hodgson, Cor. Secy.
120 E. Olive St., Compton

HUMBOLDT COUNTY BRANCH

2nd Monday, July 12, 8:00 p.m.
Los Amigos Club, Loleta, Calif.
Miss Margaret Smith, Secy.
P. O. Box 635, Ferndale, Calif.

INGLEWOOD BRANCH

2nd Thursday, July 8, 8:00 p.m.
Inglewood Women's Club
325 N. Hillcrest, Inglewood, Calif.
Mrs. Pearl Parker, Secy.
726 W. 81st St., L. A. 44, Calif.

LA MESA BRANCH

2nd Monday, July 12, 7:30 p.m.
Porter Park, University & La Mesa Blvd.
Mrs. Lena Deem, Secy.
9022 Grossmont Blvd., La Mesa, Calif.

LONG BEACH PARENT CHAPTER

2nd Tuesday, July 13, 7:30 p.m.
Fox Home at 2255 Elm Ave.
Mrs. Alberta Logue, Secy.
6050 Atlantic Ave., Long Beach, Calif.

LOS ANGELES BRANCH

3rd Wednesday, July 21
Homes of Members
Mrs. Marcia Solovy, Secy.
9617 Haas Ave., Los Angeles 47, Calif.

LOUISIANA CAPITAL BRANCH

2nd Thursday, July 8, 7:00 p.m.
Homes of Members
Mrs. James A. Whitaker, Secy.
1225 Stuart Ave., Baton Rouge, La.

MIAMI FLORIDA BRANCH

4th Tuesday, July 27, 8:00 p.m.
Simpson Memorial Garden Center
Mrs. Vivian J. Ennemoser, Secy.
1295 N. W. 54th St., Miami 42, Fla.

MISSOURI BRANCH

3rd Tuesday, July 20, 1:00 p.m.
American Legion Bldg., Linwood & Paseo
Kansas City, Mo.
Mrs. Mary Wood, Secy.
626 W. Charles, Independence, Mo.

NEW ENGLAND BRANCH

3rd Saturday, July 17
Homes of Members
Mrs. Lester H. Fox, Secy.
170 Marsh Hill Road, Dracut, Mass.

OCEAN COUNTY NEW JERSEY BR.

1st Monday, July 5, Aug. 2, 12:30 p.m.
Members Homes
Mrs. Gertrude Buek, Secy.
Box 244, Bayville, N. J.

ORANGE COUNTY BRANCH

2nd Thursday, July 8, 7:30 p.m.
Grange Hall
1 Block South Center of Garden Grove, Calif.
Mrs. Evie Darden, Secy.-Treas.
6701 S. Fee Ana St., Rt. 3, Anaheim, Calif.

PASADENA BRANCH

3rd Monday, July 24, 4:00 p.m.
Johnson Home
1320 Ramona Rd., Arcadia, Calif.
Mrs. Alva Graham, Secy.
515 El Centro St., South Pasadena

PHILOBEGONIA BRANCH

2nd Friday, July 9, Members Homes
Mrs. Robert York, Secy.
3311 Fremont St., Camden, N. J.

PORTLAND OREGON BRANCH

4th Friday, July 23, 8:00 p.m.
Journal Bldg. Aud., Front & Yamhill Sts.
Mrs. Altermatt, Secy.
1104 S. E. 148th, Portland, Oregon

RAYTOWN MISSOURI BRANCH

4th Tuesday, July 20, 7:30 p.m.
Homes of Members
Mrs. Mildred Schorr, Secy.-Treas.
7708 Sni-A-Bar Terrace, Kansas City, Mo.

REDONDO BEACH AREA

4th Friday, July 23, 8:00 p.m.
2308 Rockefeller, Redondo Beach, Calif.
Mrs. Mae Koebig, Secy.
2717 Monterey, Torrance, Calif.

RIVERSIDE BRANCH

2nd Wednesday, July 14, 7:30 p.m.
Shamel Park, 3650 Arlington, Riverside, Calif.
Mrs. Kay Elmore, Secy.
3935 McKenzie St., Arlington, Calif.

ROBINSON, ALFRED D. BRANCH

4th Friday, July 23, 10:00 a.m.
Homes of Members
Mrs. L. Carringer, Secy.
825 Harbor View Pl., San Diego 3

SACRAMENTO BRANCH

3rd Tuesday, July 20, 7:00 p.m.
Mrs. Gladys Pirkner, Secy.
750 48th St., Sacramento, Calif.

SALEM OREGON BRANCH

1st Tuesday, July 6, August 3
The Chapel, 685 Winter St., Salem
Mrs. Loren H. Edlund
865 Edina Lane, Salem, Ore.

SAN DIEGO BRANCH

4th Monday, July 26
Hard of Hearing Hall, Herbert & University
Mrs. E. R. Bohe, Secy.
3145 N. Mountain View, San Diego 15, Calif.

SAN FRANCISCO BRANCH

1st Wednesday, July 7, Aug. 4, 8:00 p.m.
Forest Lodge
266 Laguna Honda Blvd., San Francisco, Calif.
Mrs. George Leslie Kuthe, Secy.
1095 Market St., San Francisco 3, Calif.

SAN GABRIEL VALLEY BRANCH

4th Wednesday, July 28, 8:00 p.m.
Masonic Temple, 506 S. Santa Anita Ave.
Arcadia, Calif.
Mrs. Calvin T. Adams, Secy.
911 N. Second Ave., Arcadia, Calif.

SANTA BARBARA BRANCH

2nd Thursday, July 8, 7:30 p.m.
Girl Scout Clubhouse, 1838 San Andres St.
Mrs. Mary Wegener, Secy.
1611 Olive St., Santa Barbara, Calif.

SEATTLE BRANCH

3rd Tuesday, July 20, 7:45 p.m.
Trinity Parish House
609 Eighth Ave.
Mrs. H. G. Bamford, Secy.
810 W. Lee St., Seattle 99, Wash.

SHEPHERD, THEODOSIA BURR BR.

1st Tuesday, July 6, Aug. 3, 7:30 p.m.
Alice Bartlett C. H., 902 E. Main, Ventura
Mrs. Harry Fox, Secy.
3877 Mound Ave., Ventura, Calif.

SOUTHERN ALAMEDA COUNTY BRANCH

3rd Thursday, July 15, 8:00 p.m.
Cafeteria, High School, Hayward, Calif.
Mrs. Alice Zedalis, Secy.
Don Coats Nursery, Hayward, Calif.

SOUTHGATE BRANCH

4th Tuesday, July 27, 7:30 p.m.
South Gate Municipal Aud., 4900 Southern
Mr. Walter Partridge
4849 Beck Ave., Bell, Calif.

TEXAS STATE BRANCH

4th Friday, July 23, 7:30 p.m.
Rose Hill Club
Mrs. Leoma Caudle, Secy.
2822 - 8th St., Port Arthur, Texas

WESTERN PENNSYLVANIA BRANCH

2nd Wednesday, July 14, 11:00 a.m.
Homes of Members
Mrs. Joseph Rock, Corr. Secy.

WESTERN RESERVE BRANCH

CLEVELAND, OHIO
4th Wednesday, July 28, 8:00 p.m.
Garden Center, 10013 Detroit St.
Cleveland, Ohio
Mrs. Edward Lobser, Cor. Secy.
25912 Westlake Rd., Bay Village, Ohio

WHITTIER BRANCH

4th Friday, July 23, 7:30 p.m.
Hinshaw Dept. Store Aud.
Whittier Quad, E. Whittier, Whittier, Calif.
Mrs. Gladys B. Bruce, Secy.
6102 Milna Ave., Whittier, Calif.

WILLIAM PENN BRANCH, PA.

3rd Tuesday, July 20, 2:00 p.m.
Homes of Members
Wallingford, Pa.
Mrs. Joseph B. Townsend, Jr., Secy.
Baltimore Pike, Wawa, Pa.

SUPPORT OUR ADVERTISERS AND "THE BEGONIAN" WILL GROW



BEGONIAS, FUCHSIAS AND A
COMPLETE SELECTION OF ALL PLANTS
FOR THE SHELTERED GARDEN

RAINBOW NURSERY

1635 W. Florence Ave., Los Angeles 44, Calif.
Phone: PLeasant 3-6121

Raise From Seed

SHADE LOVERS

- Rainbow Coleus
- English Primrose
- Tuberous Begonia
- Fuchsia Hybrids
- Impatiens
- Calceolaria

Pkts. 50c each, All 6 \$2.00—FREE CATALOG

CAMPBELL SEED STORE

137 W. Colorado St., Dept. B
PASADENA 1 CALIFORNIA

"THE BEGONIAN"**ADVERTISING RATES**

	Per Month	Year Contract
One Inch	\$ 4.00	\$ 3.50
Quarter Page	15.00	13.50
Half Page	28.00	26.00
One Page	40.00	35.00

TO OUR ADVERTISERS — The deadline for insertion or cancellation of Advertisements (including changes of copy) is the 5th of the month preceding publication, e.g., July 5th for the August issue.

CALIFORNIA'S
choicest
Gladiolus

**GUARANTEED TO
BLOOM THIS YEAR**

BARGAIN OFFER!

Grow the most exquisite Gladiolus you've ever seen! Tall, graceful spikes topped by perfect 6 and 7 inch blooms of gorgeous red, yellow, pink, blue and white flowers. The bulbs are same size Commercial Growers plant for Prize Blooms. Truly a "must" for your flower garden this year. This special offer good for LIMITED TIME only so order NOW! 25 BULBS—5 each of above colors ONLY \$1 POSTPAID.

GERMAIN'S
Horticulturists Since 1871

25 BULBS
ONLY

\$1
POST PAID

DEPT. BE. **VAN NUYS NURSERY**
6133 Ethel Ave. Van Nuys, Calif.

MAGAZINE

Small, interesting—flowers, gardening, bird and nature notes, poems, ads.

\$1.00 per yr.; 25c, 3 months; Sample, 10c

GARDEN GLEANINGS
2B, Baroda, Michigan

**SPOONIT
PLANT FOOD**

Send Post Card for information about my generous trial offer

PLANTSMITH

Box 818 Palo Alto, Calif.

AFRICAN VIOLETS



LEAVES — PLANTS
The best of the older varieties and many new ones
Write for list

ORCHARD NURSERY

4011 Mt. Diablo Blvd. Lafayette, Calif.

**Begonias, Fuchsias, Tropicals
House Plants**

The Best of Everything for Your Garden

**FIFTH AVE. NURSERY
AND GREENHOUSE**

2510 W. Manchester, Inglewood, Calif.
Don and Ron Stanley Ph.: PLeasant 1-0874

**RARE WHITE
CALLA QUEEN BEGONIA**

Variegated foliage; white leaves edged in pinks and reds, formed like miniature calla lilies. Pot-grown blooming size—\$1.75 ea.

3 for \$5.00

SPECIAL—8 pot-grown Begonias - Miniken, Joan Strong, Lettuce Leaf, Calla Queen, 4 Geneva Dbles for \$6.95—FREE Velvet Plant

Add 25c for postage and packing to any order under \$5. For faster delivery, send 15c for Special Handling Stamp. Send for Free Listing.

PAUER'S GREENHOUSE, Dept. B-74

Route 1, Box 184

Waukesha, Wis.

For a Better Garden!

**ATLAS FISH
EMULSION**

- 100% ORGANIC FERTILIZER
- DE-ODORIZED
- NON-BURNING
- Gives vigorous growth
- Inexpensive
- Feed as you water



PILGRIMS
learned
from
INDIANS
to use
FISH
FERTILIZER



AT NURSERIES AND GARDEN STORES

Treat YOUR Soil with

A C T U M U S

for better Begonias!

ACTUMUS is a natural, organic product that brings life to the soil in garden, farm, orchard, hot-bed, coldframe, or greenhouse. Begonias and all potted plants thrive in the natural soil conditions that ACTUMUS creates—no other treatment needed. Successfully used by thousands of growers.

FREE—No Cost or Obligation

A series of informative bulletins is now being published to explain to amateur and commercial growers what ACTUMUS is—how it restores and releases the natural fertility of the soil without the addition of any artificial or poisonous products.

These bulletins will be mailed as published, free of charge, to interested gardeners, farmers, orchardists, and nurserymen. To be sure that your name is included in the group, simply fill in the coupon below and mail it to us promptly.

Burkleigh Co., Dept. BF Towson, Md.

BURKLEIGH COMPANY
Dept. BF, Towson 4, Md.
Gentlemen:

Please send me, free of charge, prices and full information about ACTUMUS.

Name

Address

City State

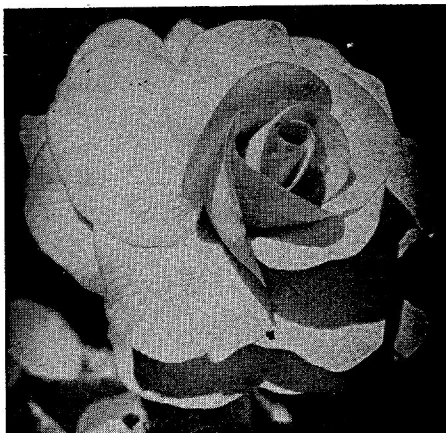
POSTMASTER
Return Postage Guaranteed
P. O. BOX 2544
Los Angeles 54, Calif.

Antonelli Brothers

**BEGONIA
GARDENS**

WRITE FOR CATALOG

Santa Cruz, California
Capitola Road



BEGONIAS — RARE PLANTS
Over 400 Varieties

Illustrated Catalog, 10c

LOGEE'S GREENHOUSES

Danielson, Connecticut

BEGONIA GOEGOENSIS

Lovely Plants, \$1.00 Each
F.O.B., Santa Barbara

RUDOLF ZIESENHENNE

1130 N. Milpas St. Santa Barbara, Calif.

TROPICAL GARDENS NURSERY

1510 W. Carson
Torrance, California

BEGONIAS A SPECIALTY

ORTHOCIDE GARDEN FUNGICIDE

Intrastate Shipping

FAirfax 8-4283

The One and Only Pacific Strain of
TUBEROUS BEGONIAS

Originated by Frank Reinelt
The largest assortment and finest new
developments in rose form and ruffled
novelties available this year.

WRITE FOR FREE CATALOG

Vetterle and Reinelt

Dept. "B", Capitola, California

*Palos
Verdes*

**Begonia
Farm**

4024 Pacific Coast Hi-way, Welteria, Calif.

TUBEROUS BEGONIAS

Complete Selections of
BEGONIAS and SHADE PLANTS
Fuchsias — Camellias

Open Every Day

Complete Nursery & Garden Supply Shop
1 1/2 Miles E. of Redondo Beach, Hi-Way 101

HOZE SPRAY

New sensational large cartridge inserted in any garden hose converts to
efficient fertilizer spreader or spray machine.

HOZE — SPRAY #1—Nicotine, lead arsenate, bordeaux & Fermate, 3/\$1.

HOZE — SPRAY #2—Above PLUS Foliar Fertilizer, 3 lg. cartridges, \$2.

HOZE — SPRAY #3—Nicotine, pyrethrum, rotenone vegetable spray, 3/\$1.

HOZE — SPRAY #4—Foliar fertilizer cartridge. Place in garden hose, attach whirling
sprinkler, fertilize garden or lawn. 3 lg. long-lasting cartridges, Ppd. \$1.

RARE BULBS

NERINE BOWDENII, at \$1, 3/\$2; N. Sarniensis, at \$1.50; Haemanthus, rare 'football lily' at \$2, 3/\$5;
Eucharis Lily, Curcums climbing lily (herb), L. Gloriosa (climbing lily), at 75c, 3/\$2; Lillum Macklinae,
rare pink trumpet, \$4, 3/\$10; L. Neilgherrense, beautiful yellow trumpet, at \$3, 2/\$5; L. Nepalense,
drooping reflexed yellow, at \$3, 2/\$5; MIXED LILY COLLECTION, 25 assorted, \$2.98. HARDY GARDEN
CYCLAMEN, 3 assorted, \$1. ORCHID PLANTS, 3 house-thriving, \$5.

JULIAN R. SEIDE

MARBLEHEAD, MASS.